

4

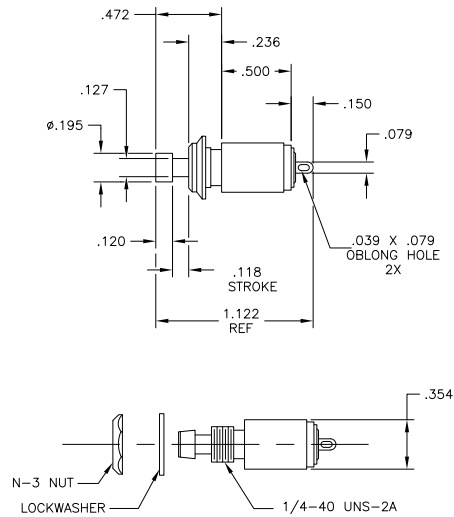
3

2

1

THIS DRAWING IS UNPUBLISHED. RELEASED FOR PUBLICATION  
 © COPYRIGHT BY TYCO ELECTRONICS CORPORATION. ALL RIGHTS RESERVED.

LOC	DIST	REVISIONS					
AD	00	P	LTR	DESCRIPTION	DATE	MIN	APD
		A1		ECO-07-026552	07NOV07	MB	MW



SPECIFICATIONS	
RATING	3A@125 VAC.
INITIAL CONTACT RESISTANCE	20 MILLIOHMS MAX.
INSULATION RESISTANCE	1,000 MEGOHMS MIN.
DIELECTRIC WITHSTANDING VOLTAGE	1,000 VRMS @ SEE LEVEL
DURABILITY	10,000 CYCLES
OPERATING FORCE	10 oz.
TRAVEL	.118
OPERATING TEMPERATURE	-20°C TO +70°C
STORAGE TEMPERATURE	-40°C TO +80°C

## NOTES:

- ALL MATERIALS AND FINISHES SHALL COMPLY WITH EU DIRECTIVE 2002/95/EC OF 27JAN2003 (RoHS).
- N-3 DECORATIVE MOUNTING NUT AND INTERNAL TOOTH LOCKWASHER SUPPLIED.
- SWITCH SUPPLIED WITH .195 DIA X .120 HIGH BACK CAP. ADDITIONAL COLOR AND LARGER SIZE CAPS ARE AVAILABLE AND MUST BE ORDERED SEPARATELY. SEE DRAWING 6-1437627-2.

MATERIALS		
COMPONENT NAME	BASE MATERIAL	FINISH
CASE	PHENOL RESIN, BLUE	
FIXED CONTACT	COPPER	GOLD FLASH
MOVING CONTACT	COPPER	GOLD FLASH OVER SILVER
SPRING	PHOSPHOR BRONZE	
SHAFT	BRASS	
PRESSURE FINGER	PBT, 20% GF	
PRESSURE PIN	BRASS	
INSULATION PLATE	ACETAL RESIN	
FRAME	BRASS	NICKEL
LOCKWASHER	STEEL	ZINC, CR3 COATED
HEX NUT	BRASS	NICKEL
PLUNGER	ACETAL RESIN	
CAP	PVC, BLACK. SEE NOTE 3.	

SPNO MOMENTARY	MPA103C04	1825403-2
SPNC MOMENTARY	MPA103B04	1825403-1
ACTION	ALCO P/N	TE P/N

THIS DRAWING IS A CONTROLLED DOCUMENT.		DATE	14APR08	BY	Tyco Electronics Corporation
DIMENSIONS:		CHK	14APR08	NAME	Harrisburg, Pa 17105-3608
INCHES		C. SELLE		Tyco Electronics	
OTHER DIMENSIONS UNLESS OTHERWISE SPECIFIED:		PRODUCT SPEC		PUSHBUTTON SWITCH	
0 PLC ± .005		APPLICATION SPEC		MOMENTARY	
1 PLC ± .005		HEIGHT		SIZE	CAGE CODE DRAWING NO
2 PLC ± .01		FINISH		A2	00779 C=1825403
3 PLC ± .01		MATERIAL	SEE TABLE	RESTRICTED TO	
4 PLC ± .01		FINISH	SEE TABLE	CUSTOMER DRAWING	SCALE
ANGLES ± .5°					2:1
					SHEET 1 OF 1
					REV A1

1825403

B

A