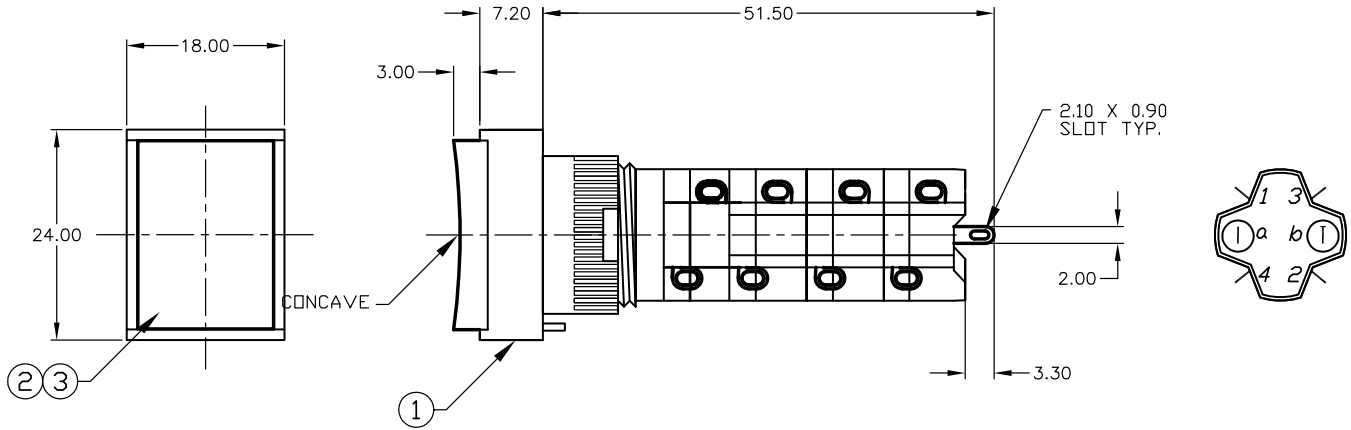


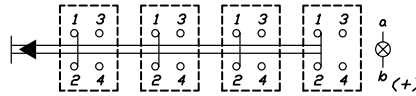
SHEET OF



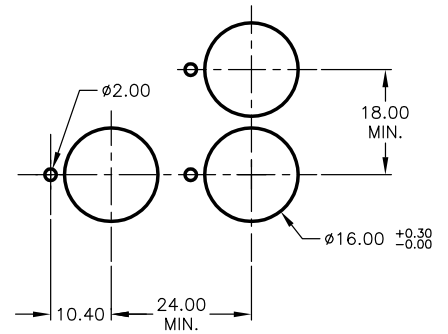
PARTS LIST			
ITEM	QTY.	PART NO.	PART DESCRIPTION
1	1	F040040	D16 EE T1 4
2	1	F050405	50-004-05 (INCANDESCENT)
3	1	F050205	50-002-05 (TRANSPARENT WHT lens)

NOTES:

1. ALL DIMENSIONS IN MM
2. GENERAL TOLERANCE: X.X=±0.4
X.XX=±0.25
3. RATINGS: 5A@250V AC,
8A@125V AC
4. LAMP VOLTAGE: 28V AC/DC @40mA (Incandescent)
5. CONTACT MATERIAL: COPPER ALLOY W/Gold Plating
6. TRAVEL: 3.0mm (Total)
7. MECHANICAL LIFE: >100,000 Cycles
8. ELECTRICAL LIFE: >50,000 Cycles
9. INSULATION RESISTANCE: >1000 mILLI-OHMS
10. OPERATING TEMP: -20°C to 55°C



CIRCUIT: 4PST
CONTACT CONFIGURATION



RECOMMENDED PANEL MOUNTING
SCALE 1:1

A	13716	RELEASE FOR PRODUCTION	1/15/04	AR
REV.	ECN No.	DESCRIPTION	DATE	CHKD

THE INFORMATION CONTAINED IN THIS DOCUMENT IS PROPRIETARY TO E-SWITCH AND IS NOT TO BE COPIED OR TRANSFERRED

E-SWITCH®				
TITLE D16EET14CWHT				
SCALE 1.5:1	DATE 1/15/04	DR AR	DWG XF0578P	REV A