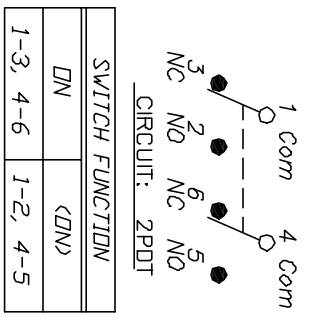
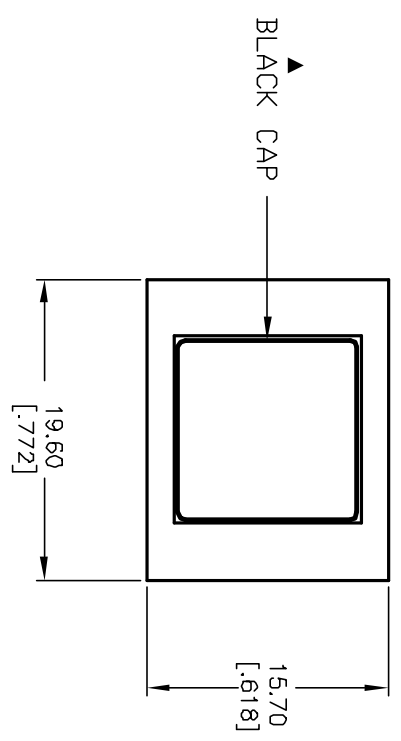
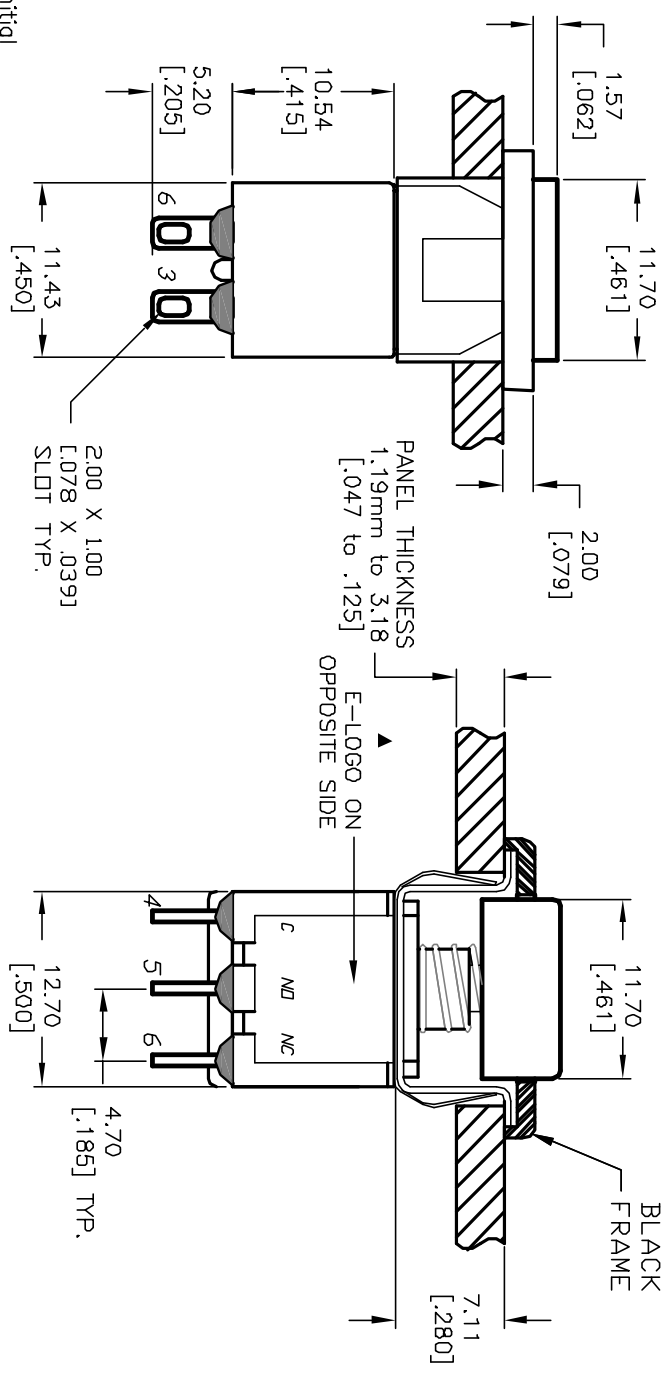


RECOMMENDED PANEL LAYOUT
SCALE 1:1



SWITCH FUNCTION	
DN	<DN>
1-3, 4-6	1-2, 4-5

< > =MOMENTARY



NOTES:

1. ALL DIMENSIONS IN MM [INCH]
2. GENERAL TOLERANCE: X.X=±0.4 X.XX=±0.25
3. TERM. NOS. FOR REF. ONLY
4. RATING: 0.4VA @20V AC max.
5. FIXED TERM. & MOVING CONTACT:
Copper Alloy w/Gold plate over Nickel plate
6. CONTACT RESISTANCE: 10mILLI-ohms initial @2-4VDC
7. ELECTRICAL LIFE: 50,000 make-and-break cycles at full load.
8. INSULATION RESISTANCE: 1,000M ohm min.
9. DIELECTRIC STRENGTH: 1000V RMS @sed level
10. OPERATING TEMP.: -30°C to +85°C

REV.	ECN No.	DESC/ ADD NOTES	DATE	CHKD
B	12493	REVISED	10/18/02	CJB
		DESCRIPTION		CHKD

TITLE	SCALE	DATE	DR	DWG	REV
700 SP-7 M1 R E APP2 BLK BLK	2:1	1/14/97	MM	T721010	B



THE INFORMATION CONTAINED IN THIS DOCUMENT IS PROPRIETARY TO E-SWITCH AND IS NOT TO BE COPIED OR TRANSFERRED