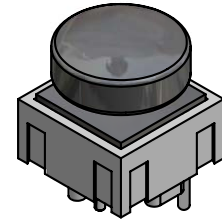
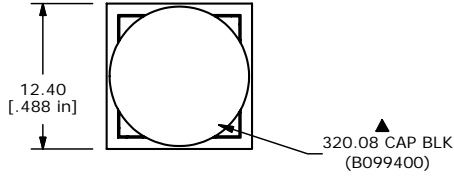
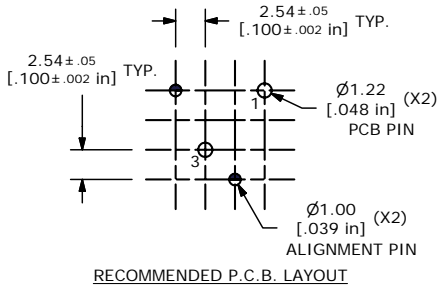
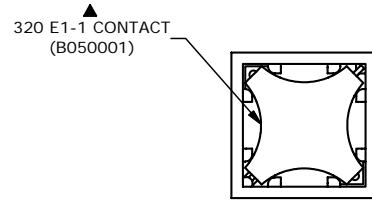
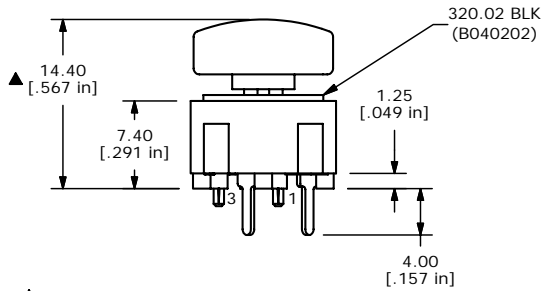
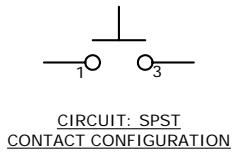


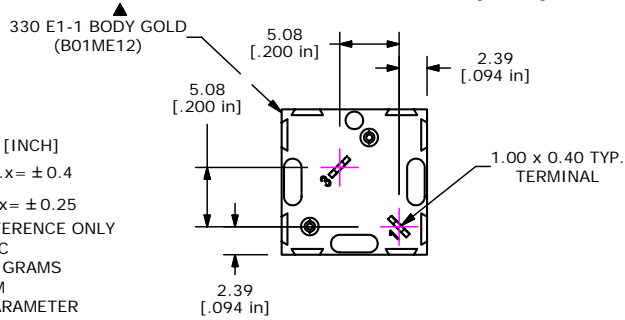
SHEET 1 OF 1



ISOMETRIC



TOP VIEW W/CAP REMOVED



- NOTES:
1. ALL DIMENSIONS IN MM [INCH]
  2. GENERAL TOLERANCE:  $x.x = \pm 0.4$   
 $x.xx = \pm 0.25$
  3. TERMINAL NO'S FOR REFERENCE ONLY
  4. RATING: 25mA, @ 50VDC
  - ▲ 5. OPERATING FORCE: 120 GRAMS
  6. TRAVEL TO MAKE: 0.7MM
  7. ▲ DENOTES CRITICAL PARAMETER
  8. 2002/95/EC (ROHS) COMPLIANT

**E-SWITCH®**

TITLE 330.02E11.08BLK

A	16055	NEW PART RELEASE	5/26/06	CT
REV	PCR NO	DESCRIPTION	DATE	BY

THE INFORMATION CONTAINED IN THIS DOCUMENT IS PROPRIETARY TO E-SWITCH AND IS NOT TO BE COPIED OR TRANSFERRED

SCALE	DATE	DR	DWG	REV
2:1	5/26/2006	CT	XB0807A	A