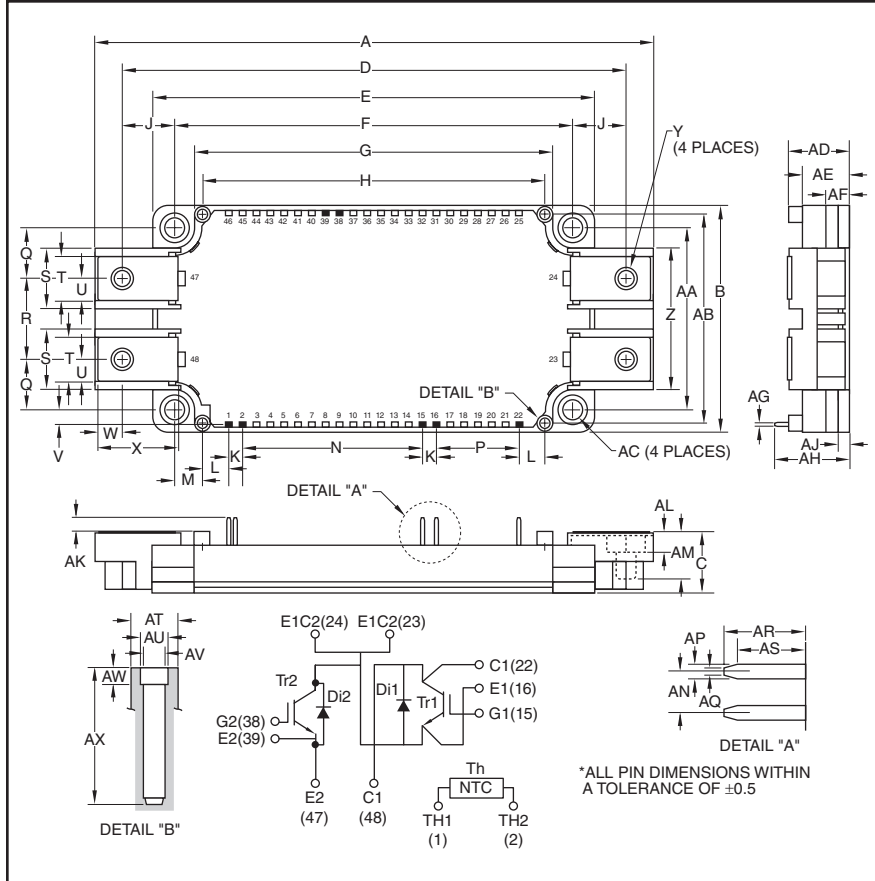


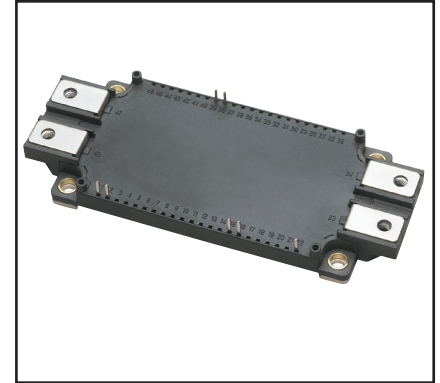
### Dual IGBTMOD™ NX-Series Module 300 Amperes/1200 Volts



Outline Drawing and Circuit Diagram

Dimensions	Inches	Millimeters
A	5.98	152.0
B	2.44	62.0
C	0.67	17.0
D	5.39	137.0
E	4.79	121.7
F	4.33±0.02	110.0±0.5
G	3.89	99.0
H	3.72	94.5
J	0.53	13.5
K	0.15	3.8
L	0.28	7.25
M	0.30	7.75
N	1.95	49.54
P	0.9	22.86
Q	0.55	14.0
R	0.87	22.0
S	0.67	17.0
T	0.48	12.0
U	0.24	6.0
V	0.16	4.2
W	0.37	6.5
X	0.83	21.14
Y	M6	M6

Dimensions	Inches	Millimeters
Z	1.53	39.0
AA	1.97±0.02	50.0±0.5
AB	2.26	57.5
AC	0.22 Dia.	5.5 Dia.
AD	0.67+0.04/-0.02	17.0+1.0/-0.5
AE	0.51	13.0
AF	0.27	7.0
AG	0.03	0.8
AH	0.81	20.5
AJ	0.12	3.0
AK	0.14	3.5
AL	0.21	5.4
AM	0.49	12.5
AN	0.15	3.81
AP	0.05	1.15
AQ	0.025	0.65
AR	0.29	7.4
AS	0.24	6.2
AT	0.17 Dia.	4.3 Dia.
AU	0.10 Dia.	2.5 Dia.
AV	0.08 Dia.	2.1 Dia.
AW	0.06	1.5
AX	0.49	12.5



#### Description:

Powerex IGBTMOD™ Modules are designed for use in switching applications. Each module consists of two IGBT Transistors in a half-bridge configuration with each transistor having a reverse-connected super-fast recovery free-wheel diode. All components and interconnects are isolated from the heat sinking baseplate, offering simplified system assembly and thermal management.

#### Features:

- Low Drive Power
- Low  $V_{CE(sat)}$
- Discrete Super-Fast Recovery Free-Wheel Diode
- Isolated Baseplate for Easy Heat Sinking

#### Applications:

- AC Motor Control
- Motion/Servo Control
- Photovoltaic/Fuel Cell

#### Ordering Information:

Example: Select the complete module number you desire from the table below -i.e. CM300DX-24A is a 1200V ( $V_{CES}$ ), 300 Ampere Dual IGBTMOD™ Power Module.

Type	Current Rating Amperes	$V_{CES}$ Volts (x 50)
CM	300	24

**CM300DX-24A**  
**Dual IGBTMOD™ NX-Series Module**  
 300 Amperes/1200 Volts

**Absolute Maximum Ratings,  $T_j = 25^\circ\text{C}$  unless otherwise specified**

Characteristics	Symbol	CM300DX-24A	Units
Power Device Junction Temperature	$T_j$	-40 to 150	$^\circ\text{C}$
Storage Temperature	$T_{\text{stg}}$	-40 to 125	$^\circ\text{C}$
Mounting Torque, M5 Mounting Screws	—	31	in-lb
Mounting Torque, M6 Main Terminal Screws	—	40	in-lb
Module Weight (Typical)	—	330	Grams
Isolation Voltage, AC 1 minute, 60Hz Sinusoidal	$V_{\text{ISO}}$	2500	Volts

**Inverter Sector**

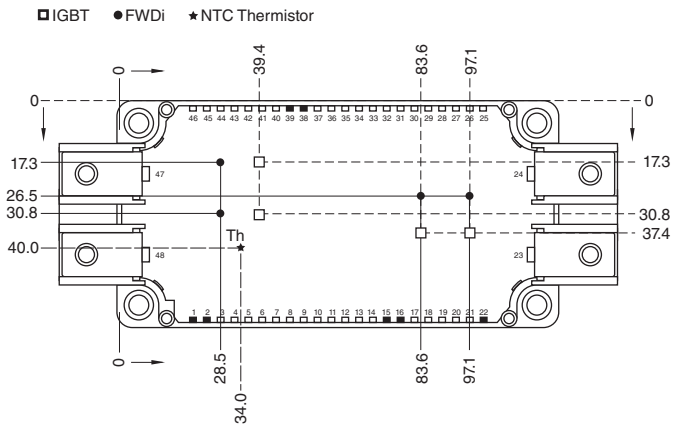
Collector-Emitter Voltage (G-E Short)	$V_{\text{CES}}$	1200	Volts
Gate-Emitter Voltage (C-E Short)	$V_{\text{GES}}$	$\pm 20$	Volts
Collector Current ( $T_C = 90^\circ\text{C}$ )*	$I_C$	300	Amperes
Peak Collector Current**	$I_{\text{CM}}$	600	Amperes
Emitter Current ( $T_C = 25^\circ\text{C}$ , $T_j < 150^\circ\text{C}$ )*	$I_E^{***}$	300	Amperes
Peak Emitter Current ( $T_j < 150^\circ\text{C}$ **)	$I_{\text{EM}}^{***}$	600	Amperes
Maximum Collector Dissipation ( $T_C = 25^\circ\text{C}$ , $T_j < 150^\circ\text{C}$ )*	$P_C$	1890	Watts

\* $T_C$ ,  $T_f$  measured point is just under the chips.

\*\*Pulse width and repetition rate should be such that device junction temperature ( $T_j$ ) does not exceed  $T_{j(\text{max})}$  rating.

\*\*\*Represents characteristics of the anti-parallel, emitter-to-collector free-wheel diode (FWDI).

**CHIP LOCATION (TOP VIEW)**



**CM300DX-24A**  
**Dual IGBTMOD™ NX-Series Module**  
 300 Amperes/1200 Volts

**Electrical and Mechanical Characteristics,  $T_j = 25^\circ\text{C}$  unless otherwise specified**

**Inverter Sector**

Characteristics	Symbol	Test Conditions	Min.	Typ.	Max.	Units
Collector Cutoff Current	$I_{CES}$	$V_{CE} = V_{CES}, V_{GE} = 0V$	—	—	1.0	mA
Gate-Emitter Threshold Voltage	$V_{GE(th)}$	$I_C = 30mA, V_{CE} = 10V$	6	7	8	Volts
Gate Leakage Current	$I_{GES}$	$V_{GE} = V_{GES}, V_{CE} = 0V$	—	—	0.5	$\mu A$
Collector-Emitter Saturation Voltage	$V_{CE(sat)}$	$I_C = 300A, V_{GE} = 15V, T_j = 25^\circ\text{C}$	—	2.0	2.6	Volts
		$I_C = 300A, V_{GE} = 15V, T_j = 125^\circ\text{C}$	—	2.2	—	Volts
		$I_C = 300A, V_{GE} = 15V, \text{Chip}$	—	1.9	—	Volts
Input Capacitance	$C_{ies}$		—	—	47.0	nF
Output Capacitance	$C_{oes}$	$V_{CE} = 10V, V_{GE} = 0V$	—	—	4.0	nF
Reverse Transfer Capacitance	$C_{res}$		—	—	0.9	nF
Total Gate Charge	$Q_G$	$V_{CC} = 600V, I_C = 300A, V_{GE} = 15V$	—	1350	—	nC
Inductive	Turn-on Delay Time	$t_{d(on)}$	—	—	550	ns
Load	Turn-on Rise Time	$t_r$	$V_{CC} = 600V, I_C = 300A,$		180	ns
Switch	Turn-off Delay Time	$t_{d(off)}$	$V_{GE} = \pm 15V,$		600	ns
Time	Turn-off Fall Time	$t_f$	$R_G = 1.0\Omega, I_E = 300A,$		600	ns
Reverse Recovery Time*	$t_{rr}$	Inductive Load Switching Operation	—	—	250	ns
Reverse Recovery Charge*	$Q_{rr}$		—	8.0	—	$\mu C$
Emitter-Collector Voltage*	$V_{EC}$	$I_E = 300A, V_{GE} = 0V$	—	2.6	3.4	Volts
		$I_E = 300A, V_{GE} = 0V, \text{Chip}$	—	2.5	—	Volts

**Thermal and Mechanical Characteristics,  $T_j = 25^\circ\text{C}$  unless otherwise specified**

Characteristics	Symbol	Test Conditions	Min.	Typ.	Max.	Units
Module Lead Resistance	$R_{lead}$	Main Terminals-Chip (Per Switch)	—	1.2	—	m $\Omega$
Thermal Resistance, Junction to Case**	$R_{th(j-c)Q}$	Per IGBT	—	—	0.066	$^\circ\text{C/W}$
Thermal Resistance, Junction to Case**	$R_{th(j-c)D}$	Per FWDi	—	—	0.12	$^\circ\text{C/W}$
Contact Thermal Resistance**	$R_{th(c-f)}$	Thermal Grease Applied	—	0.015	—	$^\circ\text{C/W}$
Internal Gate Resistance	$R_{Gint}$	$T_C = 25^\circ\text{C}$	2.1	3.0	3.9	$\Omega$
		$T_C = 125^\circ\text{C}$	4.2	6.0	7.8	$\Omega$
External Gate Resistance	$R_G$		1.0	—	10	$\Omega$

**NTC Thermistor Sector,  $T_j = 25^\circ\text{C}$  unless otherwise specified**

Characteristics	Symbol	Test Conditions	Min.	Typ.	Max.	Units
Zero Power Resistance	$R$	$T_C = 25^\circ\text{C}$	4.85	5.00	5.15	k $\Omega$
Deviation of Resistance	$\Delta R/R$	$T_C = 100^\circ\text{C}, R_{100} = 493\Omega$	-7.3	—	+7.8	%
B Constant	$B_{(25/50)}$	$B_{(25/50)} = \ln(R_{25} / R_{50}) / (1/T_{25} - 1/T_{50})^{***}$	—	3375	—	K
Power Dissipation	$P_{25}$	$T_C = 25^\circ\text{C}$	—	—	10	mW

\*Represents characteristics of the anti-parallel, emitter-to-collector free-wheel diode (FWDi).

\*\* $T_C, T_f$  measured point is just under the chips.

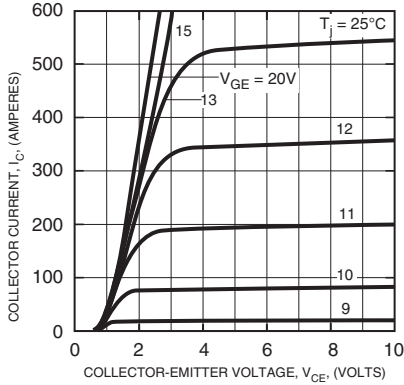
\*\*\* $R_{25}$ : Resistance at Absolute Temperature  $T_{25}(K)$ ,  $R_{50}$ : Resistance at Absolute Temperature  $T_{50}(K)$ ,  
 $T_{25} = 25(^\circ\text{C}) + 273.15 = 298.15(K)$ ,  $T_{50} = 50(^\circ\text{C}) + 273.15 = 323.15(K)$



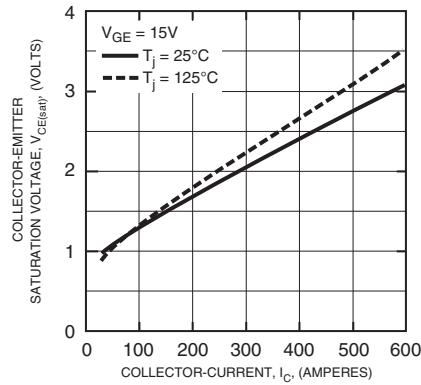
Powerex, Inc., 173 Pavilion Lane, Youngwood, Pennsylvania 15697 (724) 925-7272

**CM300DX-24A**  
**Dual IGBTMOD™ NX-Series Module**  
 300 Amperes/1200 Volts

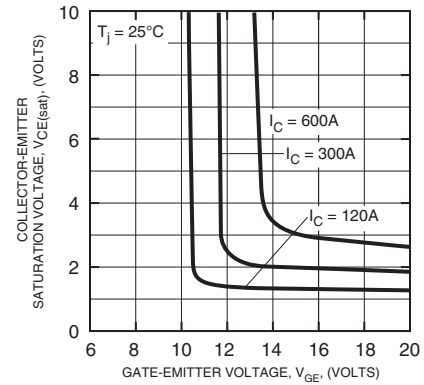
**OUTPUT CHARACTERISTICS (INVERTER PART - TYPICAL)**



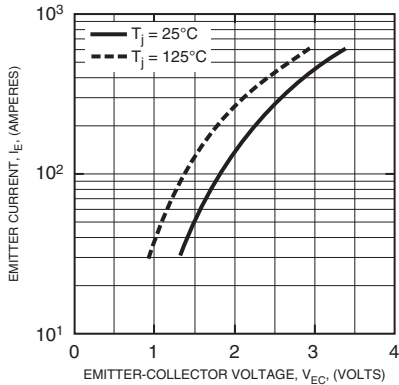
**COLLECTOR-EMITTER SATURATION VOLTAGE CHARACTERISTICS (INVERTER PART - TYPICAL)**



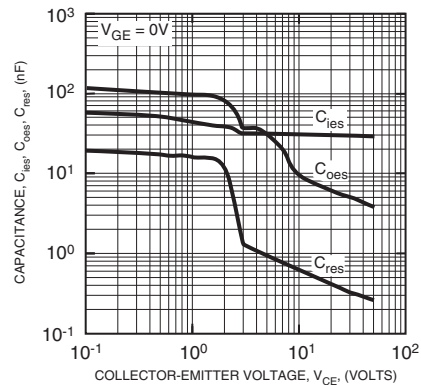
**COLLECTOR-EMITTER SATURATION VOLTAGE CHARACTERISTICS (INVERTER PART - TYPICAL)**



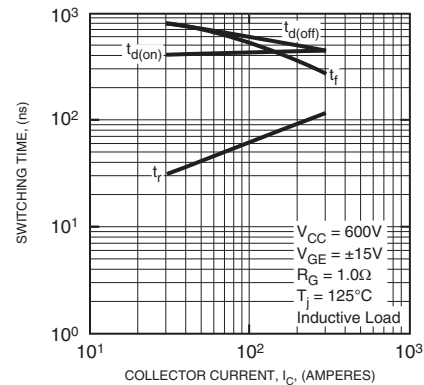
**FREE-WHEEL DIODE FORWARD CHARACTERISTICS (INVERTER PART - TYPICAL)**



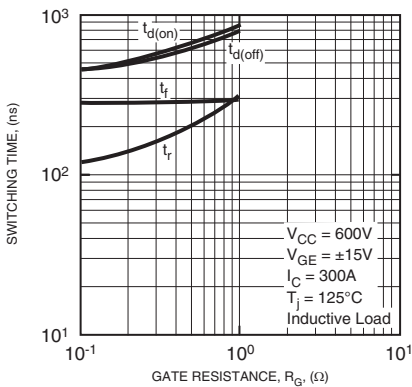
**CAPACITANCE VS. VCE (INVERTER PART - TYPICAL)**



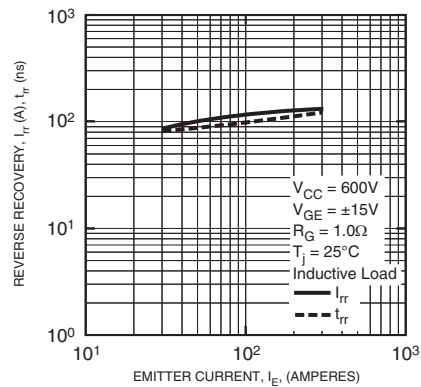
**HALF-BRIDGE SWITCHING CHARACTERISTICS (INVERTER PART - TYPICAL)**



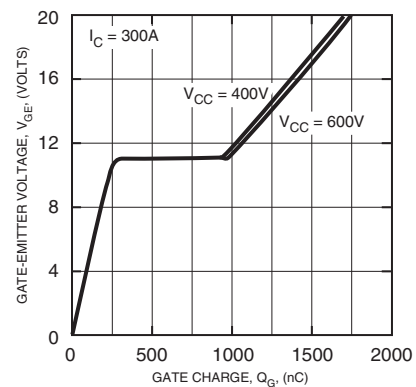
**SWITCHING TIME VS. GATE RESISTANCE (INVERTER PART - TYPICAL)**



**REVERSE RECOVERY CHARACTERISTICS (INVERTER PART - TYPICAL)**



**GATE CHARGE VS. VGE (INVERTER PART)**



**CM300DX-24A**  
**Dual IGBTMOD™ NX-Series Module**  
 300 Amperes/1200 Volts

