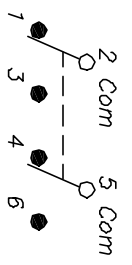


RECOMMENDED P.C.B. LAYOUT

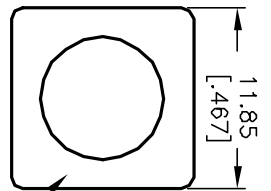


CIRCUIT: 2PDT

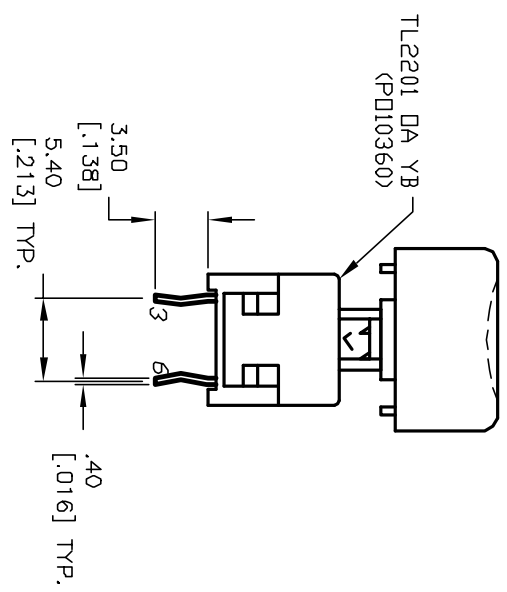
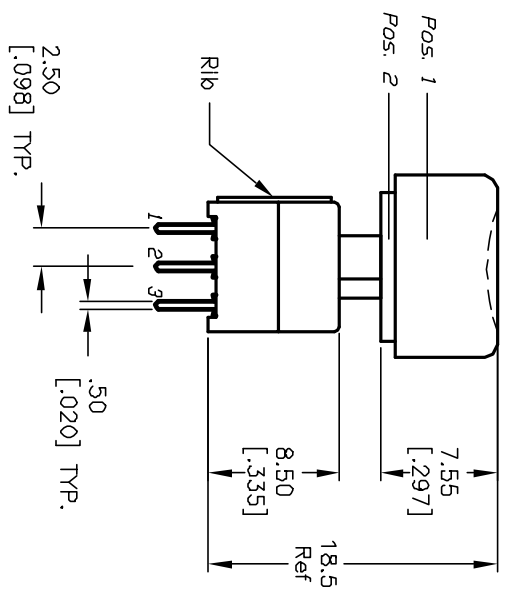
| SWITCH FUNCTION |         |
|-----------------|---------|
| POS 1           | POS 2   |
|                 |         |
| 2-1,5-4         | 2-3,5-6 |

NOTES:

1. ALL DIMENSIONS IN MM [INCH]
2. GENERAL TOLERANCE: X.X=±0.4 X.XX=±0.25
3. TERM. NOS. FOR REF. ONLY
4. RATING: 0.1A @30V DC
5. TRAVEL: TRAVEL:=2.50±0.38
6. OPERATING FORCE:180±50gf
7. CONTACT RESISTANCE: 50mILLI-Ohms MAX. Initially
8. ELECTRICAL LIFE (at Full Load):  
10,000 Cycles Make & Break
9. DESIGNATE MAJOR FEATURE:



320,094 GR Y  
(B043502)



**E-SWITCH®**

|      |         |                         |         |      |
|------|---------|-------------------------|---------|------|
| REV. | ECN No. | DESCRIPTION             | DATE    | CHKD |
| A    | 12609   | RELEASED FOR PRODUCTION | 12/4/02 | CB   |

|                                |       |         |    |         |     |
|--------------------------------|-------|---------|----|---------|-----|
| TITLE                          | SCALE | DATE    | DR | DWG     | REV |
| TL2201 DA Y B (W/320,094 GR Y) | 2:1   | 12/4/02 | CB | XP0247A | A   |

THE INFORMATION CONTAINED IN THIS DOCUMENT IS PROPRIETARY TO E-SWITCH AND IS NOT TO BE COPIED OR TRANSFERRED