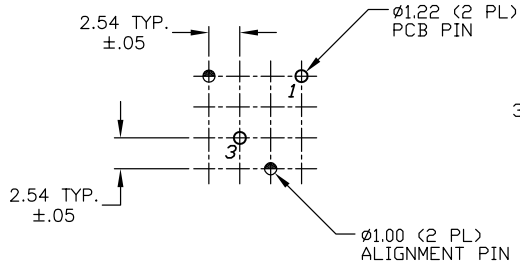
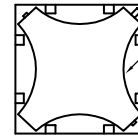
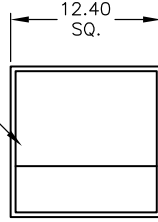


SHEET OF

**TOP VIEW -SHOW ORIENTATION OF LEGENDS
IN RESPECT TO THE PCB PIN TERMINALS.**



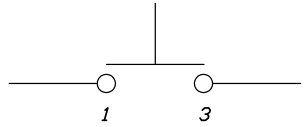
320.22 YEL CAP
(B042207)



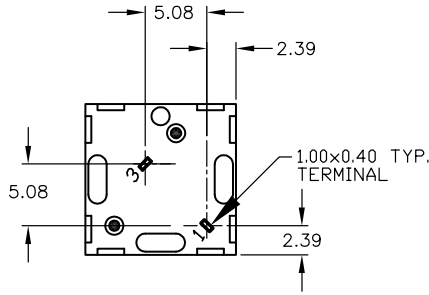
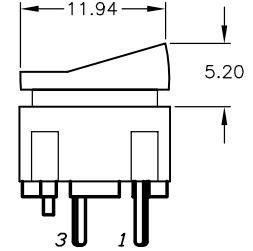
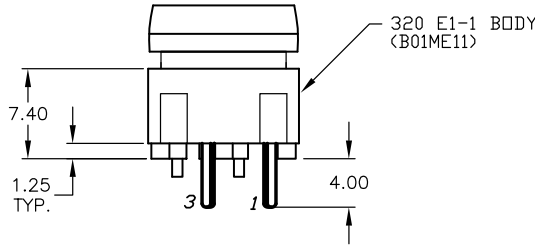
320 E1-1 CONTACT
(B050001)

SHOWN CAP REMOVED

RECOMMENDED P.C.B. LAYOUT



CIRCUIT: SPST
CONTACT CONFIGURATION



NOTES:

1. ALL DIMENSIONS IN MM
2. GENERAL TOLERANCE: X.X=±0.4
X.XX=±0.25
3. TERMINAL NO'S FOR REFERENCE ONLY.
4. RATING: 25mA, @50VDC
5. OPERATING FORCE: 120gF
6. TRAVEL TO MAKE: 0.7mm

E-SWITCH®

TITLE

320.22 E1-1 YEL

A	14816	RELEASED FOR PRODUCTION	4/1/05	AR
REV.	ECN No.	DESCRIPTION	DATE	CHKD

THE INFORMATION CONTAINED IN THIS DOCUMENT
IS PROPRIETARY TO E-SWITCH AND IS
NOT TO BE COPIED OR TRANSFERRED

SCALE

2:1

DATE

4/1/05

DR

AR

DWG

XB0021A

REV

A