

4

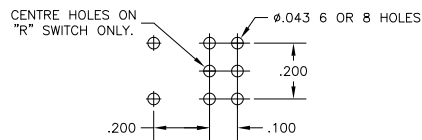
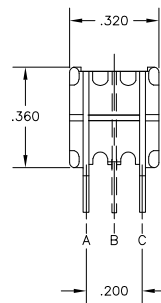
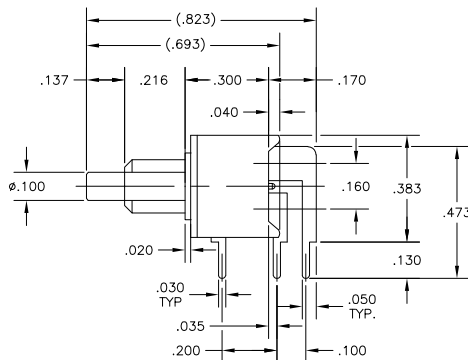
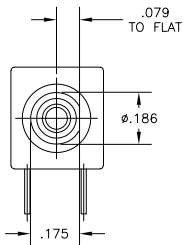
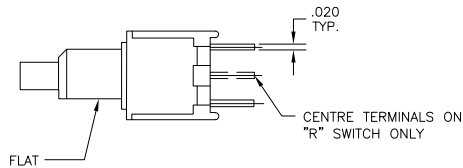
3

2

1

THIS DRAWING IS UNPUBLISHED. RELEASED FOR PUBLICATION
 © COPYRIGHT BY TYCO ELECTRONICS CORPORATION. ALL RIGHTS RESERVED.

LOC	DIST	REVISIONS					
AD	00	P	LTR	DESCRIPTION	DATE	MIN	APPRO
		B		ECO-06-000585	10AUG06	BSV	MZ



RECOMMENDED HOLE LAYOUT
 TOLERANCE ±.002 UNLESS OTHERWISE NOTED

SPECIFICATIONS:

MATERIALS:
 CASE: HIGH TEMPERATURE POLYESTER, UL 94V-0.
 ACTUATOR BUTTON: THERMOPLASTIC. COLOR: SEE CHART BELOW.
 MOVING CONTACT: COPPER ALLOY. GOLD PLATED OVER NICKEL.
 FIXED CONTACT: COPPER ALLOY. GOLD PLATED OVER NICKEL.
 TERMINALS: COPPER ALLOY. TIN LEAD PLATED.
 TERMINAL SEAL: SP EPOXY.
 DP EPOXY OPTIONAL.

ELECTRICAL:
 CONTACT RATING: GOLD = 0.4 VA MAX. @ 20 VDC OR PEAK AC.
 INITIAL CONTACT RESISTANCE: 20 MILLIOHMS MAX.
 INSULATION RESISTANCE: 1,000 MEGOHMS @ 500 VDC MIN.
 DIELECTRIC STRENGTH: 1,000 VAC @ SEA LEVEL.
 LIFE EXPECTANCY: GOLD 1 POLE=100,000 CYCLES.
 2 POLE=80,000 CYCLES.

MECHANICAL:
 ACTUATION FORCE: 50 TO 400g.
 ACTUATION TRAVEL: .030 APPROX.

ENVIRONMENTAL:
 OPERATING TEMPERATURE: -22°F TO +149°F (-30°C TO +65°C).
 STORAGE TEMPERATURE: -22°F TO +149°F (-30°C TO +65°C).

NOTES:

- INTERPRET DRAWING PER ANSI Y14.5M-1994.

(*)	SPECIFY COLORS BUTTON
0	BLACK
2	RED
6	BLUE

MODEL NO	ACTION	CONTACTS	
		FREE BUTTONS	DEPRESSED BUTTON
TPB21MG-RA(*)	DPST NORMALLY OPEN	NONE	A TO C
TPB21RG-RA(*)	DPDT MOMENTARY	B TO A	B TO C (MOM)

DIMENSIONS:		TOLERANCES UNLESS OTHERWISE SPECIFIED:		TYCO ELECTRONICS	
INCHES	0 PLC ± .010	1 PLC ± .005	2 PLC ± .003	EDR	11FE006
	3 PLC ± .002	4 PLC ± .001	ANGLES ± .1°	OK	13FE006
				J.S.	10FE006
				S.D.C.	
				PRODUCT SPEC	
				APPLICATION SPEC	
				WEIGHT	
				CUSTOMER DRAWING	
MATERIAL: SEE SPECIFICATIONS		FINISH: SEE SPECIFICATIONS		Tyco Electronics Corporation Harrisburg, Pa 17105-3608 SUBMINATURE PUSHBUTTON SWITCH TPB21MG/RG-RA(*) SIZE: CAGE CODE: DRAWING NO: A200779C-8-1437571-6 RESTRICTED TO: 1 OF 1 REV B	
				SCALE: 4:1	SHEET: 1

B-1437571-B

B

A