

4

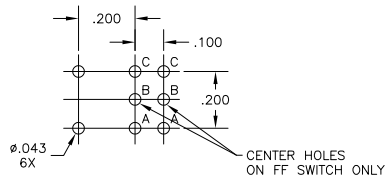
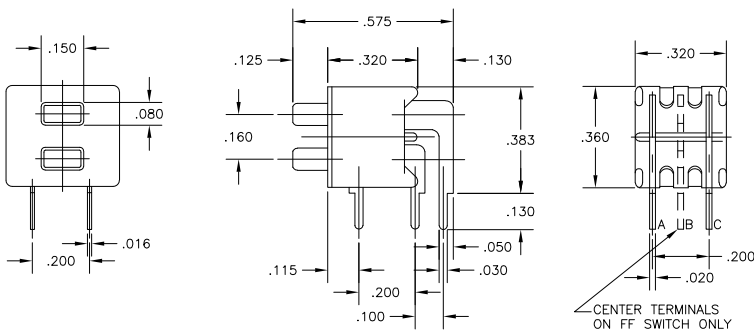
3

2

1

THIS DRAWING IS UNPUBLISHED. RELEASED FOR PUBLICATION  
 © COPYRIGHT BY TYCO ELECTRONICS CORPORATION. ALL RIGHTS RESERVED.

LOC		DISTR		REVISIONS		
P	LT	DESCRIPTION	DATE	BY	APPD	
A		ECO 06 000585	03AUG06	BSV	MZ	



SPECIFICATIONS:

MATERIALS:  
 CASE: HIGH TEMPERATURE POLYESTER  
 ACTUATOR: POLYAMIDE  
 CONTACT: GOLD OVER NICKEL BARRIER  
 TERMINAL: COPPER ALLOY, TIN/LEAD PLATE

ELECTRICAL:  
 CONTACT RATING: 0.4 VA MAX. @20 VDC OR PEAK AC  
 INITIAL CONTACT RESISTANCE: 20 MILLIOHMS MAX.  
 INSULATION RESISTANCE: 1000 MEGOHMS @ 500 VDC MIN.  
 DIELECTRIC STRENGTH: 1000 VOLTS RMS @ SEA LEVEL  
 LIFE EXPECTANCY: 50,000 CYCLES MIN

MECHANICAL:  
 ACTUATION FORCE: 50 TO 400 GRAMS AVERAGE

ENVIRONMENTAL:  
 OPERATING TEMPERATURE: -22°F TO +149°F (-30°C TO +65°C)  
 STORAGE TEMPERATURE: -22°F TO +149°F (-30°C TO +65°C)

NOTES:

1. INTERPRET DRAWING PER ASME Y14.5M-1994
2. TERMINALS ARE EPOXY SEALED.

(\*) SPECIFY BUTTON COLOR -  
 (0) = BLACK  
 (2) = RED  
 (6) = BLUE

B TO C (MOM.)	B TO A	2XSPDT MOMENTARY	TP21FFG-RA (*)
A TO C	NONE	2XSPST NORMALLY OPEN	TP21CCG-RA (*)
DEPRESSED BUTTION	FREE BUTTION	ACTION	MODEL NO.

THIS DRAWING IS A CONTROLLED DOCUMENT.		DATE: 11SEP98	Tyco Electronics Corporation Harrisburg, Pa 17105-3608	
DIMENSIONS: INCHES		TRU=D	PUSH BUTTON SWITCH RIGHT ANGLE, (TP21**GRA* SERIES)	
TOLERANCES UNLESS OTHERWISE SPECIFIED:		APVD	SIZE: A2	CHG CODE: 00779
Ø PLG	± .005	PRODUCT SPEC	DRAWING NO: C=1-1437571-8	RESTRICTED TO: -
Ø PLG	± .005	APPLICATION SPEC	SCALE: 4:1	SHEET: 1 OF 1
Ø PLG	± .010	WEIGHT	CUSTOMER DRAWING	REV: A
Ø PLG	± .010	FINISH		

1-1437571-B

A