

4

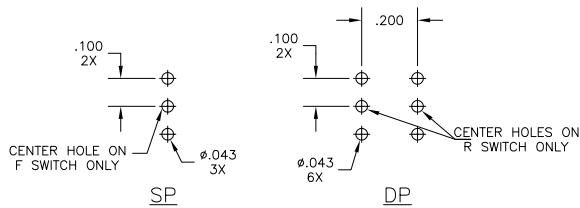
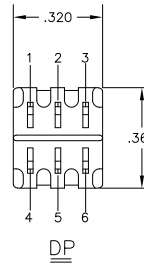
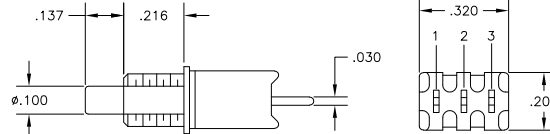
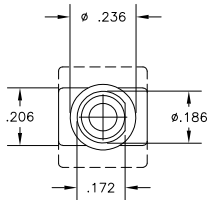
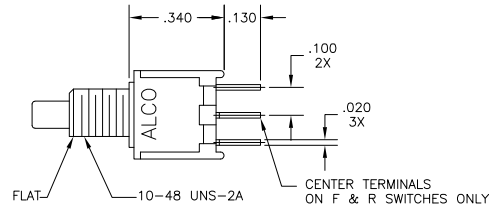
3

2

1

THIS DRAWING IS UNPUBLISHED. RELEASED FOR PUBLICATION
 © COPYRIGHT BY TYCO ELECTRONICS CORPORATION. ALL RIGHTS RESERVED.

LOC	DIST	REVISIONS					
AD	00	P	LTR	DESCRIPTION	DATE	MIN	APD
		B		ECO-06-000585	10AUG06		BSV MK



RECOMMENDED HOLE LAYOUT
 TOLERANCE $\pm .002$ UNLESS
 OTHERWISE NOTED

(*)	ACTUATOR BUTTON COLORS
(0)	BLACK
(2)	RED
(6)	BLUE

SPECIFICATIONS:

MATERIALS:

CASE: HIGH TEMPERATURE POLYESTER.
 ACTUATOR BUTTON: POLYAMIDE, COLOR: SEE CHART BELOW.
 MOVING CONTACT: COPPER ALLOY, GOLD OVER NICKEL PLATE.
 FIXED CONTACT/TERMINAL: COPPER ALLOY. TIN/LEAD PLATE.
 TERMINAL SEAL: EPOXY.

ELECTRICAL:

CONTACT RATING: 0.4 VA MAX. @ 20 VDC OR PEAK AC.
 INITIAL CONTACT RESISTANCE: 20 MILLIOHMS MAX.
 INSULATION RESISTANCE: 1,000 MEGOHMS @ 500 VDC MIN.
 DIELECTRIC STRENGTH: 1,000 VOLTS RMS @ SEA LEVEL.
 LIFE EXPECTANCY: 100,000 CYCLES.

MECHANICAL:

ACTUATION FORCE: 50 TO 400 GRAMS.
 ACTUATION TRAVEL: .030".

ENVIRONMENTAL:

OPERATING TEMPERATURE: -22°F TO $+149^{\circ}\text{F}$ (-30°C TO $+65^{\circ}\text{C}$)
 STORAGE TEMPERATURE: -22°F TO $+149^{\circ}\text{F}$ (-30°C TO $+65^{\circ}\text{C}$)

NOTES:

- INTERPRET DRAWING PER ANSI Y14.5M-1982.
- MOUNTING HARDWARE SUPPLIED: (1) LOCKWASHER
(1) HEX NUT.

TERMINALS CONNECTED WITH BUTTON
 IN POSITIONS SHOWN.

MODEL NO.		
TPC21RG-PC (*)	2 TO 1 (MOM) 5 TO 4	2 TO 3 (MOM) 5 TO 6
TPC21RG-PC (*)	OFF	1 TO 3 (MOM) 4 TO 6
TPC11FG-PC (*)	2 TO 1	2 TO 3 (MOM)
TPC11CG-PC (*)	OFF	1 TO 3 (MOM)

NOTE:
 DESIGNATION NUMBERS ARE FOR REFERENCE ONLY
 AND DO NOT APPEAR ON THE SWITCHES

AUGAT D/N 40313-SD

THIS DRAWING IS A CONTROLLED DOCUMENT.		DR: S. KIRCORIAN 030219	Tyco Electronics Corporation Harrisburg, Pa 17105-3608	
DIMENSIONS: INCHES	TOLERANCES UNLESS OTHERWISE SPECIFIED:	APD	NAME	RESTRICTED TO
Ø PLC ± .010	Ø PLC ± .010	APD	PRODUCT SPEC	—
Ø PLC ± .010	Ø PLC ± .010	APD	APPLICATION SPEC	—
Ø PLC ± .010	Ø PLC ± .010	APD	WEIGHT	—
Ø PLC ± .010	Ø PLC ± .010	APD	CUSTOMER DRAWING	—
MATERIAL SEE SPECIFICATIONS	FINISH SEE SPECIFICATIONS	APD	SIZE	—
		APD	CHG CODE	—
		APD	DRAWING NO.	—
		APD	SCALE	4:1
		APD	SHEET	1 OF 1
		APD	REV	B

1437572-3

B

A