

4

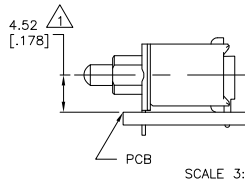
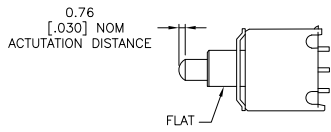
3

2

1

THIS DRAWING IS UNPUBLISHED. RELEASED FOR PUBLICATION
 © COPYRIGHT BY TYCO ELECTRONICS CORPORATION. ALL RIGHTS RESERVED.

LOC	DIST	REVISIONS		
F	LR	DESCRIPTION	DATE	BY
AD	OO	A	ECO-06-000585	09AUG06 BSV MZ



SPECIFICATIONS:

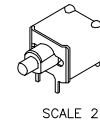
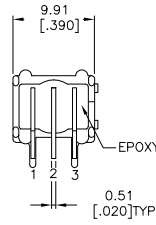
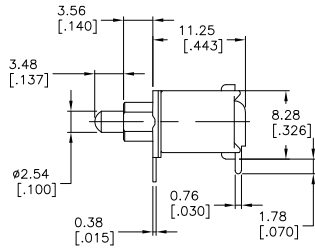
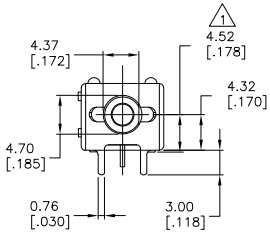
CURRENT RATING—0.4VA MAX., 20V MAX. (AC/DC).

INITIAL CONTACT RESISTANCE—20MILLIOHMS MAX. @100mV & 1mA.

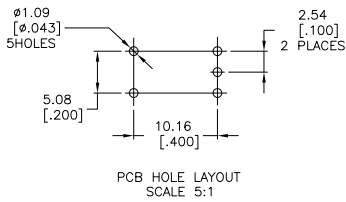
VOLTAGE WITHSTANDING—1000VAC BETWEEN TERMINALS 1 & CASE GROUND FOR 1 MINUTE.

NOTES

△ ACTUAL DISTANCE OF CL FROM PCB WHEN MOUNTED.



(*)	BUTTON COLORS AVAILABLE
(0)	BLACK
(2)	RED
(6)	BLUE



NO CENTER TERMINAL ON "C" FUNCTION SWITCH		
TPB11FG-RA-ES**	2-1	2-3(MOM)
TPB11CGRA-ES**	OFF	3-1(MOM)
SWITCH MODEL	FLAT	FLAT
TERMINAL CONNECTED WITH BUTTON IN POSITION SHOWN.		
NOTE: TERMINAL DESIGNATION NUMBERS ARE FOR REFERENCE ONLY AND DO NOT APPEAR ON SWITCHES.		

THIS DRAWING IS A CONTROLLED DOCUMENT.		DRW: V.J. MARTINI	050200	 Tyco Electronics Corporation Harrisburg, Pa 17105-3608
DIMENSIONS: mm [INCHES]		CHK: ORCROFT	080200	
DIMENSIONS: mm [INCHES] 0 PLG ± .01 1 PLG ± .01 2 PLG ± .01 3 PLG ± .01 4 PLG ± .01 ANGLES ± 1°		PRODUCT SPEC: — APPLICATION SPEC: — WEIGHT: —		SIZE: A2 CASE CODE: C-6-1437571-2 DRAWING NO: C-6-1437571-2 RESTRICTED TO: —
MATERIAL: —		FINISH: —		CUSTOMER DRAWING SCALE: 3:1 SHEET: 1 OF 1 REV: A

6-1437571-2

A