

4

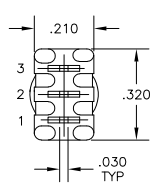
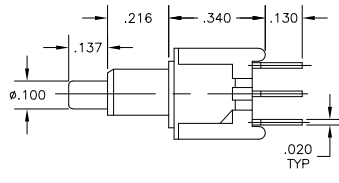
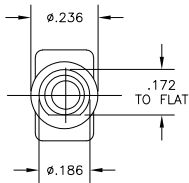
3

2

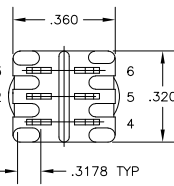
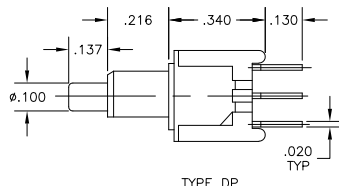
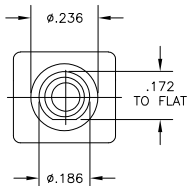
1

THIS DRAWING IS UNPUBLISHED. RELEASED FOR PUBLICATION  
 © COPYRIGHT BY TYCO ELECTRONICS CORPORATION. ALL RIGHTS RESERVED.

LOC		DIBT		REVISIONS		
P	LTR	DESCRIPTION	DATE	MIN	APD	
B		ECO 06 000585	08AUG06	BSV	MZ	



TYPE SP



TYPE DP

SPECIFICATIONS:

**MATERIALS:**  
 CASE: HIGH TEMPERATURE POLYESTER, UL 94V-0.  
 ACTUATOR BUTTON: THERMOPLASTIC, COLORS: SEE CHART BELOW.  
 MOVING CONTACT: COPPER ALLOY, GOLD PLATED.  
 FIXED CONTACT: COPPER ALLOY, GOLD PLATED.  
 TERMINALS: COPPER ALLOY, TIN LEAD PLATED.  
 TERMINAL SEAL: SP EPOXY  
 DP EPOXY OPTIONAL.

**ELECTRICAL:**  
 CONTACT RATING: 0.4 VA MAX. @ 20 VDC OR PEAK AC.  
 INITIAL CONTACT RESISTANCE: 20 MILLIOHMS MAX.  
 INSULATION RESISTANCE: 1,000 MEGOHMS @ 500 VDC MIN.  
 DIELECTRIC STRENGTH: 1,000 VAC.  
 LIFE EXPECTANCY: 1 POLE = 60,000 CYCLES  
 2 POLES = 50,000 CYCLES.

**MECHANICAL:**  
 ACTUATION FORCE: 50 TO 400g.  
 ACTUATION TRAVEL: .030 APPROX.

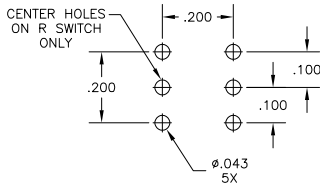
**ENVIRONMENTAL:**  
 OPERATING TEMPERATURE: -22°F TO +149°F(-30°C TO +65°C).  
 STORAGE TEMPERATURE: -22°F TO +149°F(-30°C TO +65°C).

NOTES:

1. INTERPRET DRAWING PER ASME Y14.5M-1994.
2. SUPPLIED WITH MOUNTING HARDWARE.



RECOMMENDED HOLE LAYOUT FOR SP TOLERANCE ±.002 UNLESS OTHERWISE NOTED



RECOMMENDED HOLE LAYOUT FOR DP TOLERANCE ±.002 UNLESS OTHERWISE NOTED

OBSOLETE	TPB21RGPC2	8-1437571-4
OBSOLETE	TPB21RGPC0	8-1437571-3
	TPB21MGPC2	8-1437571-0
	TPB21MGPC0	7-1437571-9
OBSOLETE	TPB11FGPC6	6-1437571-7
OBSOLETE	TPB11FGPC2	6-1437571-6
	TPB11FGPC0	6-1437571-5
OBSOLETE	TPB11CGPC6	5-1437571-4
	TPB11CGPC2	5-1437571-3
	TPB11CGPC0	5-1437571-1
	ALCO MODEL	TYCO PART NO

TERMINALS CONNECTED WITH BUTTON IN POSITIONS SHOWN.

SWITCH MODEL	FLAT	
TPB11CG-PC (*)	OFF	1-3(MOM)
TPB11FG-PC (*)	2-1	2-3(MOM)
TPB21MG-PC (*)	OFF	1-3 (MOM) 4-6
TPB21RG-PC (*)	2-1 5-4	2-3 (MOM) 5-6

NOTE:  
 TERMINAL DESIGNATION NUMBERS ARE FOR REFERENCE ONLY AND DO NOT APPEAR ON SWITCHES.

THIS DRAWING IS A CONTROLLED DOCUMENT.

DATE	12SEP98	TYCO Electronics Corporation
TRJ-D		Harrisburg, Pa 17105-3608
OK		
APD		
PRODUCT SPEC		
APPLICATION SPEC		
HEIGHT		
CUSTOMER DRAWING	SCALE 4:1	SHEET 1 OF 1 REV B

DIMENSIONS:	INCHES	TOLERANCES UNLESS OTHERWISE SPECIFIED:	
		FRACTIONS	DECIMALS
(*) BUTTON COLOR		0.005	±.005
(0) BLACK		0.005	±.005
(2) RED		0.005	±.005
(6) BLUE		0.005	±.005
MATERIAL	SEE SPECIFICATIONS		
FINISH	SEE SPECIFICATIONS		

5-1437571-1

B

A