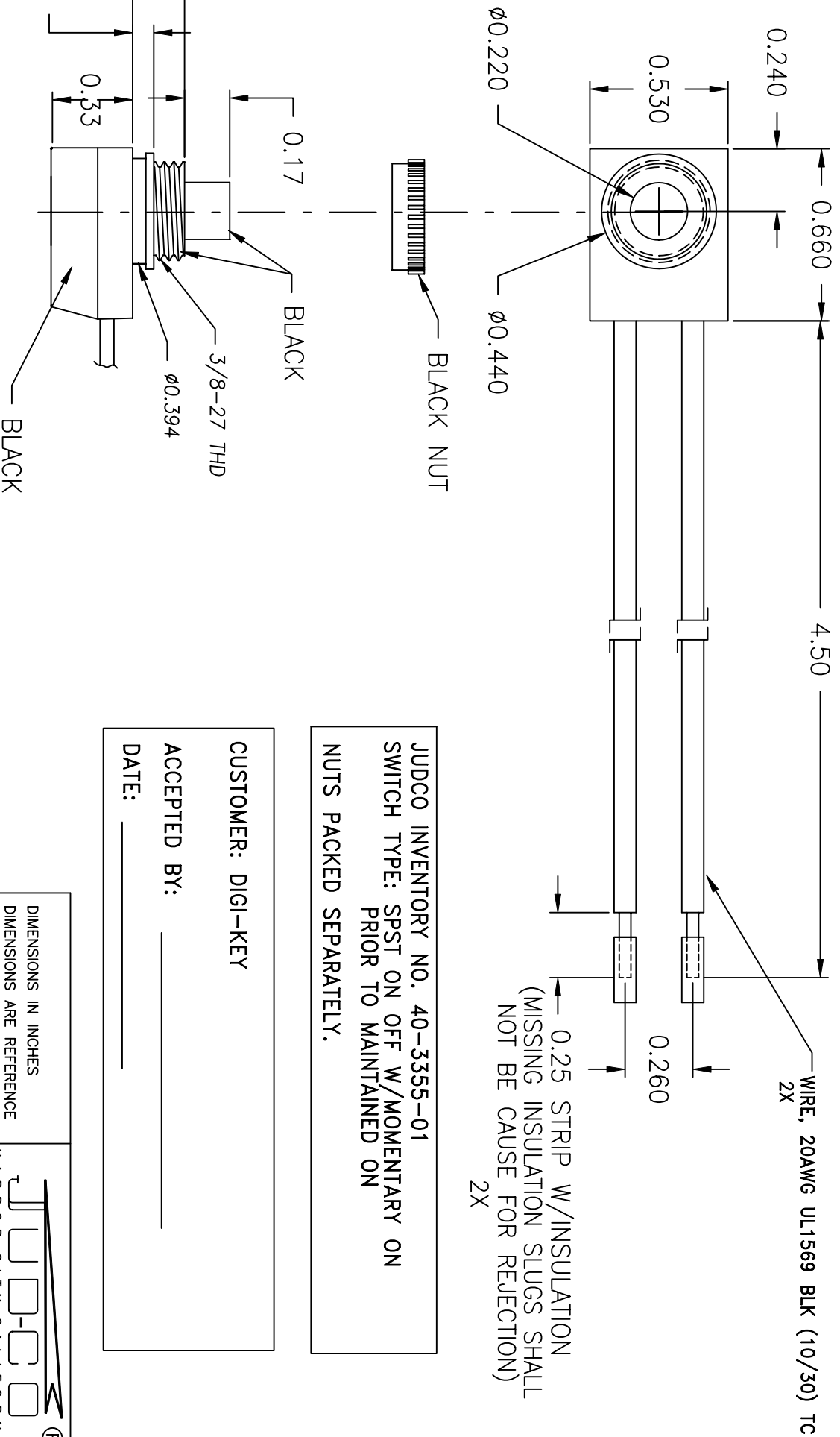


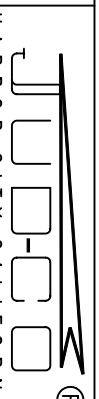
LTR	EN	DESCRIPTION	APPR	BY	DATE
A	-	INITIAL RELEASE	RB	NH	11-10-03



JUDCO INVENTORY NO. 40-3355-01  
 SWITCH TYPE: SPST ON OFF W/MOMENTARY ON  
 PRIOR TO MAINTAINED ON  
 NUTS PACKED SEPARATELY.

CUSTOMER: DIGI-KEY  
 ACCEPTED BY: \_\_\_\_\_  
 DATE: \_\_\_\_\_

DIMENSIONS IN INCHES  
 DIMENSIONS ARE REFERENCE



TITLE  
 HARBOR CITY CALIFORNIA  
 OUTLINE  
 J-188B-1 MOMENTARY

DRAWN: NH 11-10-03

DWG. NO.

APPR: KJ 11-10-03

1415-494

1415U494A.DWG

SHEET

1 OF 1

This document embodies a product, component, and/or design proprietary to JUDCO MANUFACTURING INC., and which is protected either as a trade secret, by U.S. Patent, or by copyright. It may not be used in any way without written express consent of JUDCO MANUFACTURING INC.