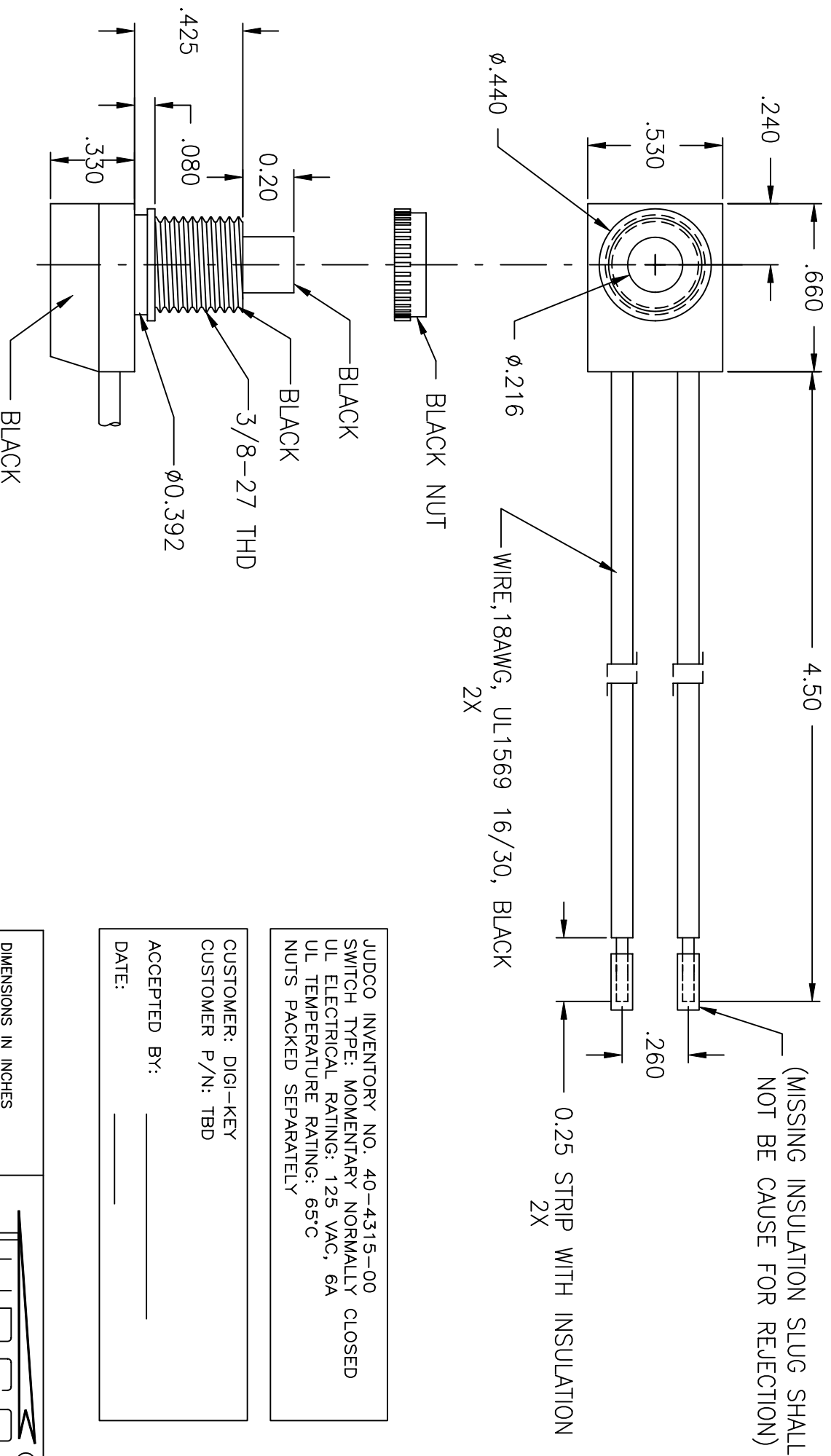


LTR	EN	DESCRIPTION	APPR	BY	DATE
A	-	INITIAL RELEASE	RB	DC	01-27-05



JUDCO INVENTORY NO. 40-4315-00
 SWITCH TYPE: MOMENTARY NORMALLY CLOSED
 UL ELECTRICAL RATING: 125 VAC, 6A
 UL TEMPERATURE RATING: 65°C
 NUTS PACKED SEPARATELY

CUSTOMER: DIGI-KEY
 CUSTOMER P/N: TBD
 ACCEPTED BY: _____
 DATE: _____

DIMENSIONS IN INCHES
 DIMENSIONS ARE REFERENCE

DRAWN: DC 01-27-05
 APPR: KJ 01-27-05

1415U743A.DWG

TITLE
 HARBOR CITY CALIFORNIA
 OUTLINE
 J-188A-3 ULAC

DWG. NO. 1415-743
 SHEET 1 OF 1

This document embodies a product, component, and/or design proprietary to JUDCO MANUFACTURING INC., and which is protected either as a trade secret, by U.S. Patent, or by copyright. It may not be used in any way without written express consent of JUDCO MANUFACTURING INC.