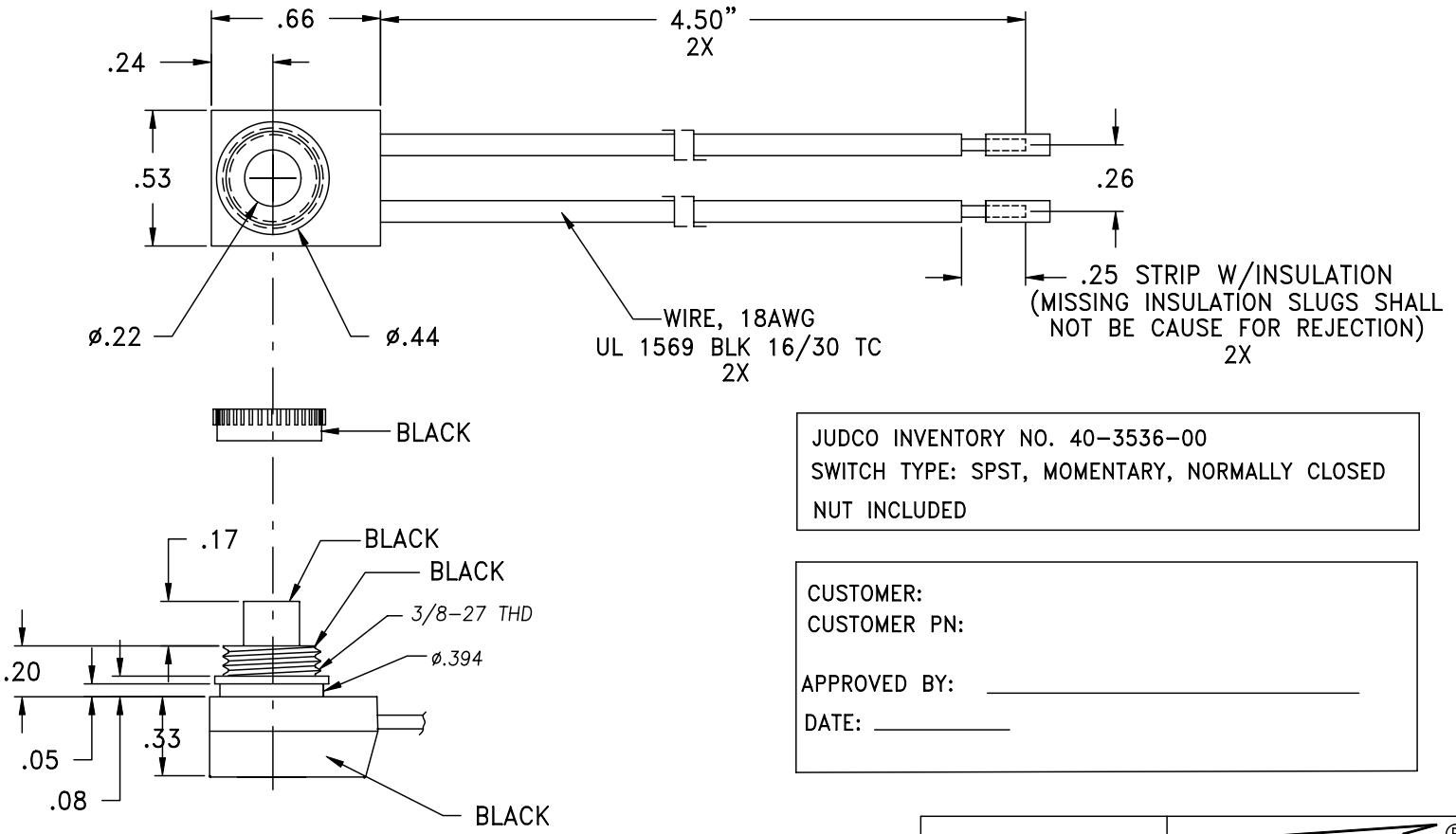



LTR	EN	DESCRIPTION	APPR	BY	DATE
A	-	INITIAL RELEASE	RB	NH	11-10-03
A1	-	UPDATED SIGNATURE BLOCK TO NEW FORMAT	MT	DC	12-11-08



JUDCO INVENTORY NO. 40-3536-00
 SWITCH TYPE: SPST, MOMENTARY, NORMALLY CLOSED
 NUT INCLUDED

CUSTOMER:
 CUSTOMER PN:
 APPROVED BY: _____
 DATE: _____

DIMENSIONS IN INCHES DIMENSIONS ARE REFERENCE		 HARBOR CITY CALIFORNIA TITLE J-188B-3 NON UL WIRES	
DRAWN: NH	11-10-03	DWG. NO.	1415-496
APPR: KJ	12-11-08	SHEET	1 OF 1
ENG'G: IS	12-11-08		
1415U496A1.DWG			

This document embodies a product, component, and/or design proprietary to JUDCO MANUFACTURING INC., and which is protected either as a trade secret, by U.S. Patent, or by copyright. It may not be used in any way without written express consent of JUDCO MANUFACTURING INC.