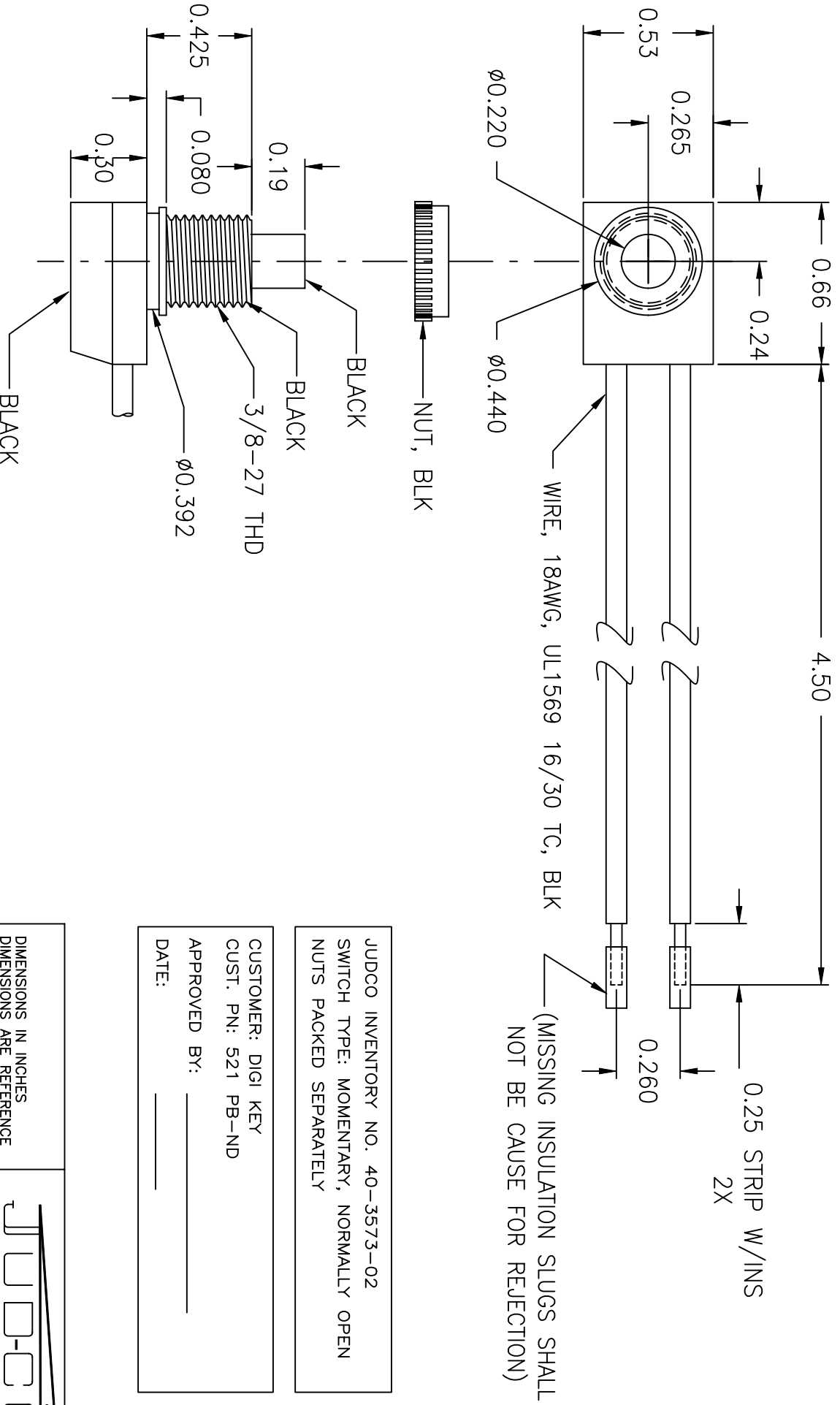


LTR	EN	DESCRIPTION	APPR	BY	DATE
A	-	INITIAL RELEASE	RB	EM	2-16-04



JUDCO INVENTORY NO. 40-3573-02
 SWITCH TYPE: MOMENTARY, NORMALLY OPEN
 NUTS PACKED SEPARATELY

CUSTOMER: DIGI KEY
 CUST. PN: 521 PB-ND
 APPROVED BY: _____
 DATE: _____

DIMENSIONS IN INCHES
 DIMENSIONS ARE REFERENCE

DRAWN: EM 02-16-04
 APPR: KJ 02-16-04

1415U578A.DWG

TITLE
 HARBOR CITY CALIFORNIA
 OUTLINE
 J-188A-2S NON UL WIRES

DWG. NO.
 1415-578

SHEET
 1 OF 1

This document embodies a product, component, and/or design proprietary to JUDCO MANUFACTURING INC., and which is protected either as a trade secret, by U.S. Patent, or by copyright. It may not be used in any way without written express consent of JUDCO MANUFACTURING INC.