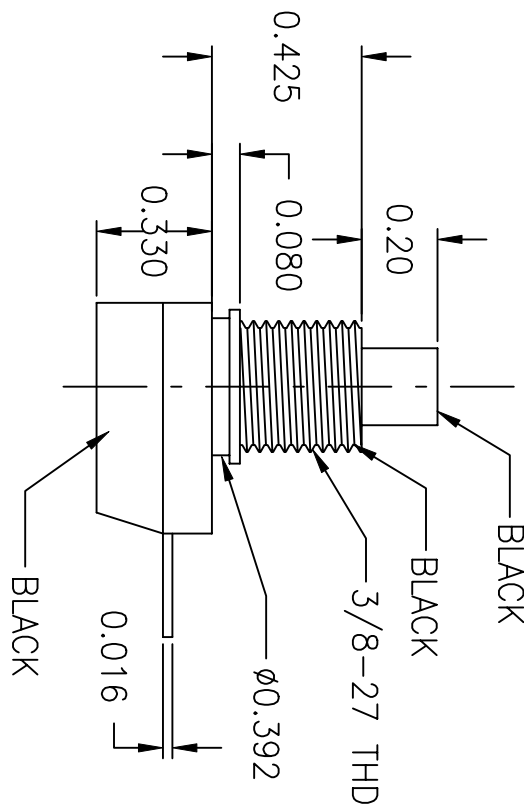
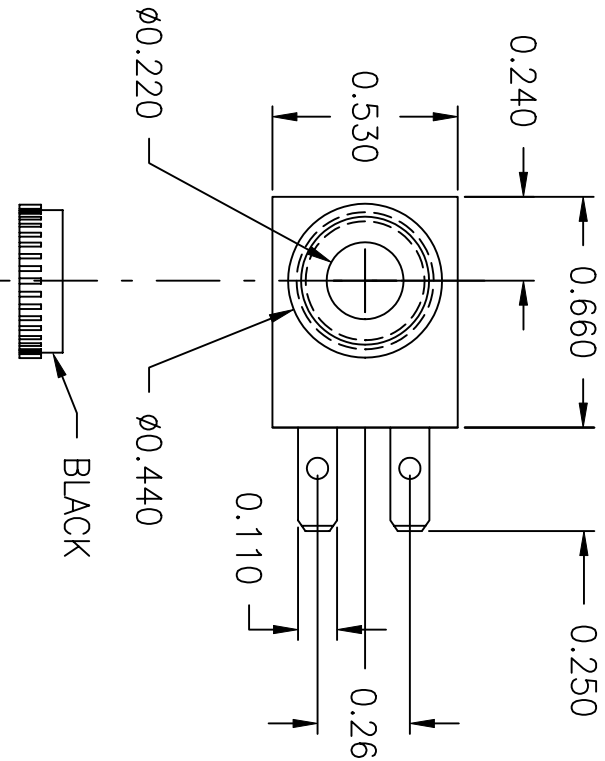


LTR	EN	DESCRIPTION	APPR	BY	DATE
A	-	INITIAL RELEASE	RB	NH	9-15-06
A1	-	ADDED CUSTOMER'S PART NUMBER.	RB	DC	1-16-07



JUDCO INVENTORY NO. 40-4523-00  
 SWITCH TYPE: PUSH ON-PUSH OFF, SPST  
 ELECTRICAL RATINGS: 14VDC 10A  
 TEMPERATURE RATING: 55°C  
 NUT PACKED SEPARATELY

CUSTOMER: DIGIKEY  
 CUSTOMER PN: 547PB-ND  
 APPROVED BY: \_\_\_\_\_  
 DATE: \_\_\_\_\_

DIMENSIONS IN INCHES  
 DIMENSIONS ARE REFERENCE

DRAWN: NH 9-15-06  
 APPR: KJ 1-16-07

TITLE: HARBOR CITY CALIFORNIA  
 OUTLINE

DWG. NO. J-188A-1 ULDC W/STRAIGHT TERMINALS  
 SHEET 1415-1026  
 1 OF 1

This document embodies a product, component, and/or design proprietary to JUDCO MANUFACTURING INC., and which is protected either as a trade secret, by U.S. Patent, or by copyright. It may not be used in any way without written express consent of JUDCO MANUFACTURING INC.