



MICRO SWITCH

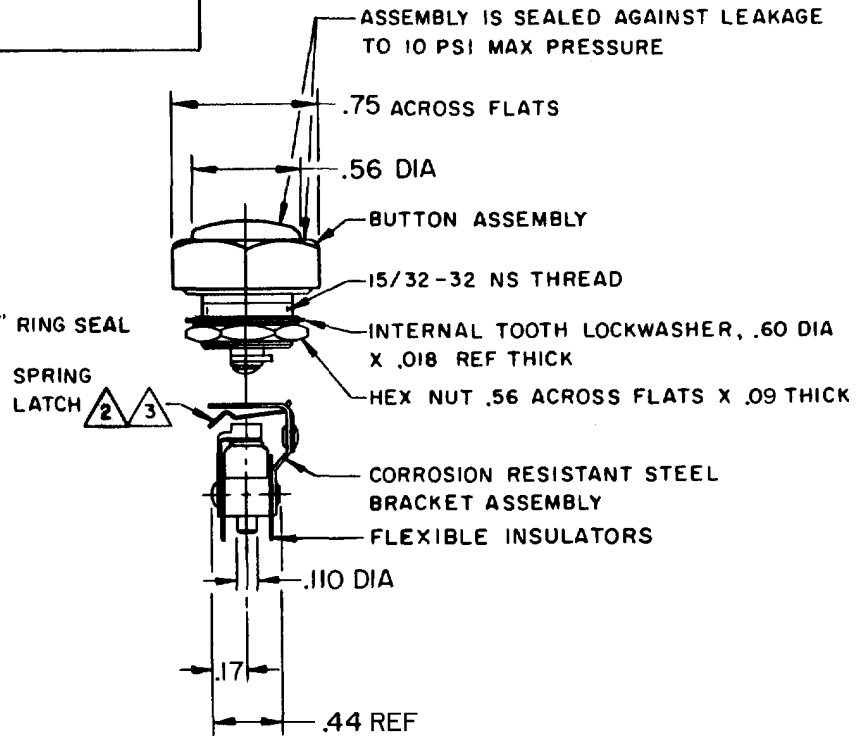
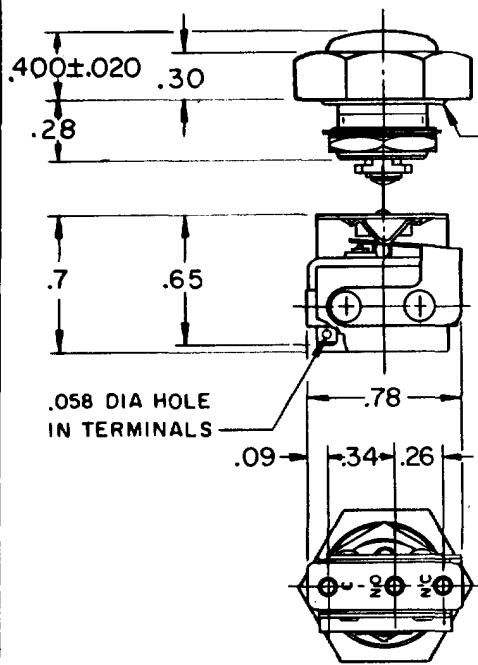
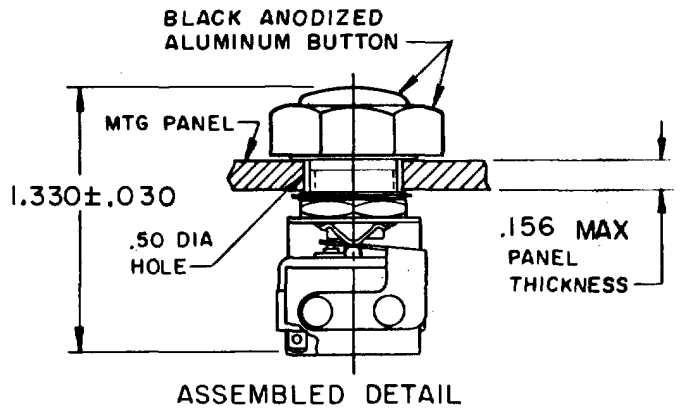
FREEPORT, ILLINOIS, U.S.A.
A DIVISION OF HONEYWELL

FED. MFG. CODE 91929

ASSEMBLY - PUSHBUTTON SWITCH

CATALOG LISTING

IPB 4



NOTES

- 1 - UNIT INCLUDES CATALOG LISTING "ISM" TYPE BASIC SWITCH
- 2 - SPRING LATCH PERMITS ASSEMBLY AND DISASSEMBLY AS REQUIRED
- 3 - "D" SHAPED HOLE IN SPRING LATCH PREVENTS ROTATION BETWEEN THE TWO PARTS
- 4 - ASSEMBLY IS COMPLETED AFTER INSTALLING BUTTON TO PANEL
- 5 - TERMINALS ARE PLATED FOR SOLDERING

THIS DRAWING COVERS A PROPRIETARY ITEM AND IS THE PROPERTY OF MICRO SWITCH, A DIVISION OF HONEYWELL. THIS DRAWING IS NOT TO BE COPIED OR USED WITHOUT THE APPROVAL OF MICRO SWITCH.

CHARACTERISTICS

OPERATING FORCE --- 3 LB APPROX
6 LB MAX

PLUNGER TRAVEL --- .031 APPROX

ELECTRICAL DATA

CONTACT ARRANGEMENT		SCALE FULL	
S P D T		DO NOT SCALE PRINT	
250 VAC		5 AMP	
30 VOLTS DC RATING			
INDUCTIVE	SEA LEVEL	3 AMP	
	50,000 FT	2.5 AMP	
RESISTIVE	SEA LEVEL	5 AMP	
	50,000 FT	5 AMP	
MAXIMUM INRUSH		24 AMP	

UNLESS OTHERWISE NOTED
DIMENSIONS ARE IN INCHES

TOLERANCES ARE:

ONE PLACE	(.0)	±.030
TWO PLACE	(.00)	±.015
THREE PLACE	(.000)	±.005
ANGLES		±

WEIGHT .04 LB

IPB 4
 PAGE 1 OF 1
 M
 DRAWING NUMBER
 ISSUE 10
 REVISIONS
 A 00 19743
 M B F 5 APRIL 65
 B 00 20470
 M B F 2 SEP 65
 C 0095143
 D L T 14 JUL 99
 CHECK L S D 8 APR 65
 CHECK L S D 5 APR 65
 FORMTEK
 DRAWN
 FO-50378