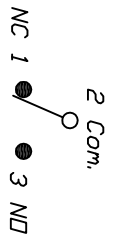


RECOMMENDED PCB LAYOUT

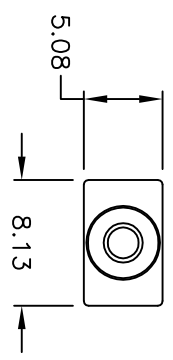
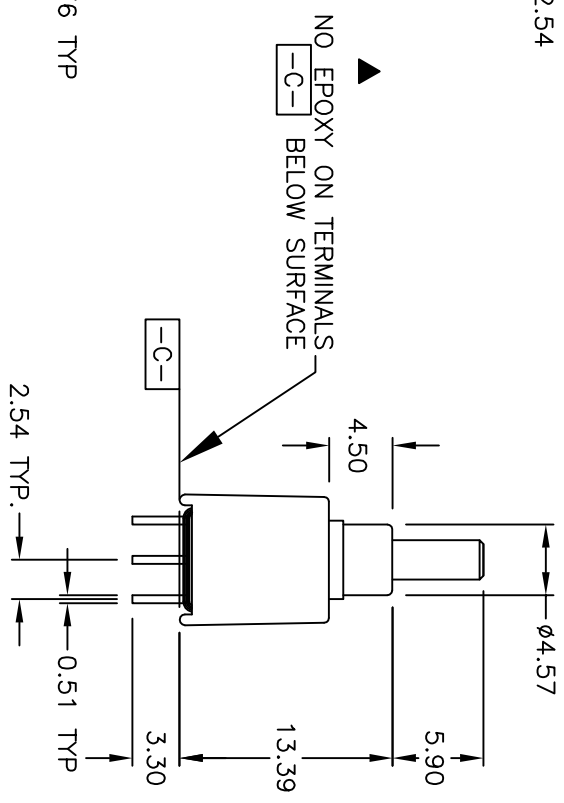
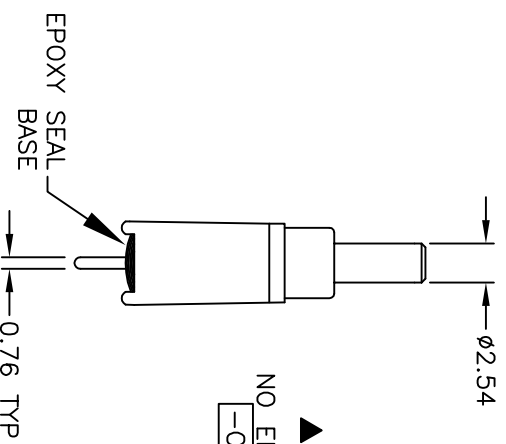


CIRCUIT: SPDT  
CONTACT CONFIGURATION

DN	(DN)
2-1	2-3

( ) = Momentary

- NOTES:
1. ALL DIMENSIONS IN MM
  2. GENERAL TOLERANCE: X.X=±0.4  
X.XX=±0.25
  3. TERM. NOS. FOR REF. ONLY
  4. RATING: 1A @120VAC or 28VDC
  5. FIXED TERM. MOVING CONTACT:  
Copper Alloy w/ Silver plate.
  6. ELECTRICAL LIFE: 50,000 make-and-break cycle  
at full load.
  7. DIELECTRIC STRENGTH: 1,000 V RMS @sea level.
  8. OPERATING TEMP.: -30°C to 85°C
  9. ▲ DESIGNATE MAJOR FEATURE
  10. 2002/95/EC (ROHS) COMPLIANT



B	17674	CHANGED ACTUATOR DIM. TO 5.90	9/13/07	BF
A	12308	RELEASED FOR PRODUCTION	7/17/00	CB
REV.	ECN No.	DESCRIPTION	DATE	CHKD
THE INFORMATION CONTAINED IN THIS DOCUMENT IS PROPRIETARY TO E-SWITCH AND IS NOT TO BE COPIED OR TRANSFERRED				

**E-SWITCH®**

8004 WSP8M2QE

TITLE

SCALE 2:1

DATE 9/13/07

DR BF

DWG T834004

REV B