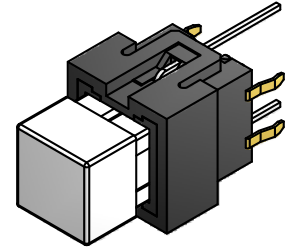
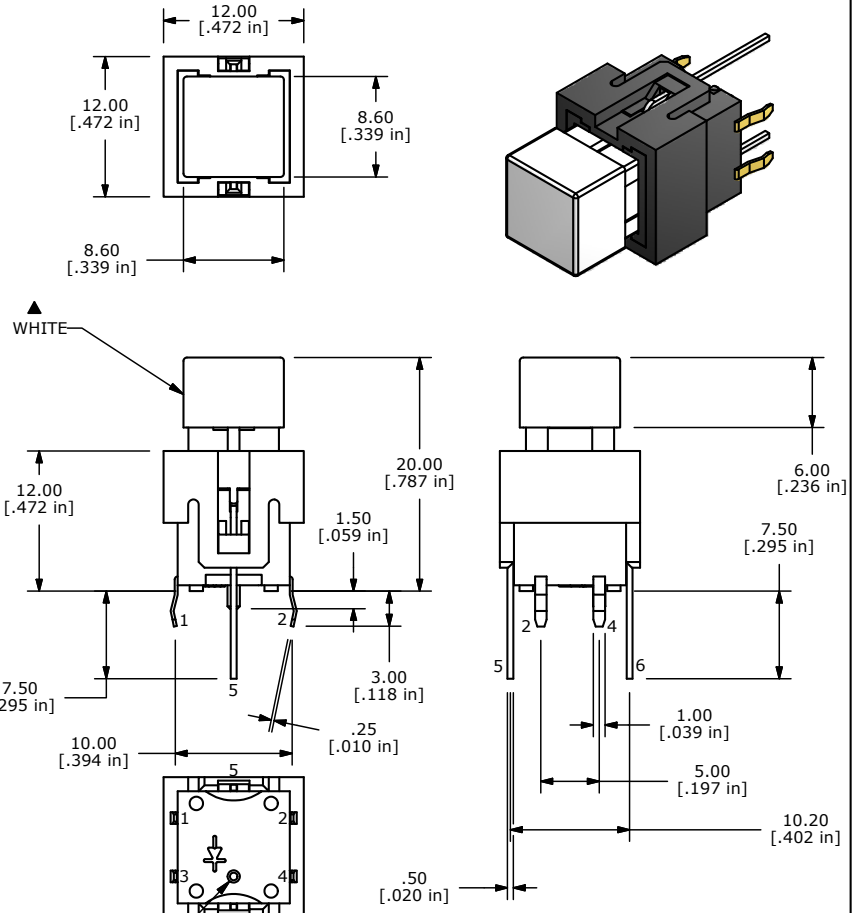
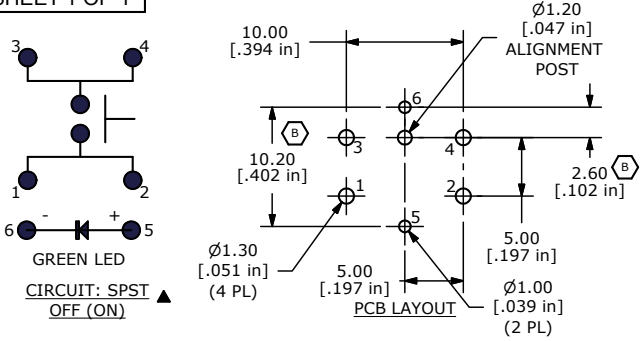


SHEET 1 OF 1



- NOTES:
1. ALL DIMENSIONS IN MM [INCH]
  2. GENERAL TOLERANCE: X.X=±0.4  
X.XX=±0.25
  3. RATING: 20VDC @ 1mA
  4. CONTACT RESISTANCE: 200Ω MAX.
  5. INSULATION RESISTANCE: 100MΩ MIN. @ 100VDC.
  - ▲ 6. OPERATING FORCE: 125± 35gf
  7. TRAVEL: 1.3 +/- 0.3 mm
  8. OPERATING TEMPERATURE: -20°C TO 70°C
  9. OPERATING LIFE: 300,000 CYCLES
  - ▲ 10. LED: GREEN
  - ▲ 11. ▲ DENOTES CRITICAL PARAMETERS
  12. 2002/95/EC (ROHS) COMPLIANT

LED SPECS	UNITS	GREEN
FORWARD CURRENT	mA	20
FORWARD VOLTAGE @20mA	V	3.5 TYP. 4.0 MAX.
LUMINOUS INTENSITY @ 20mA	mcd	550 MIN. 1100 TYP.

B	19590	UPDATE PCB LAYOUT	1/17/11	BGL
A	18656	New Release	9/14/09	rc
REV	PCR NO	DESCRIPTION	DATE	BY

THE INFORMATION CONTAINED IN THIS DOCUMENT IS PROPRIETARY TO E-SWITCH AND IS NOT TO BE COPIED OR TRANSFERRED

TITLE LP15S1WHTGRN-N				
SCALE	DATE	DR	DWG	REV
2 : 1	8/17/2009	rc	B270002	B