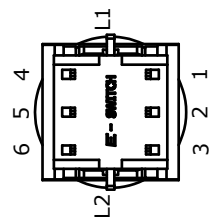
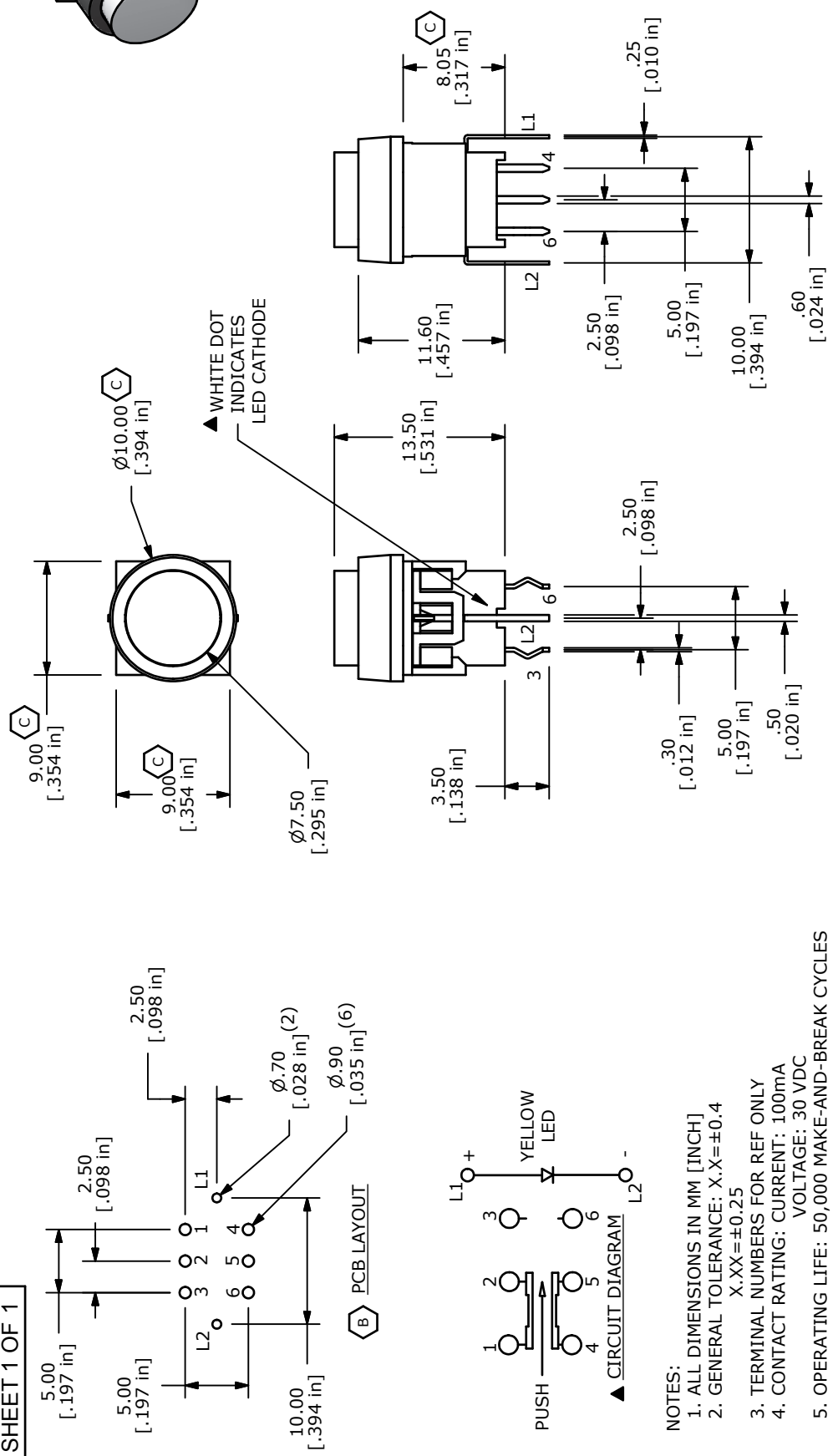


ISOMETRIC



TITLE LP40A1PBTTY

C	19602	DRAWING UPDATE	1/19/11	BGL
B	18414	PCB LAYOUT SECTION FIXED	2/19/09	BLR
A	18361	RELEASE FOR PRODUCTION	12/22/08	BLR
REV	PCR NO	DESCRIPTION	DATE	BY

SCALE	2 = 1	DATE	2/19/2009	DR	BLR	DWG	B240019	REV	C
-------	-------	------	-----------	----	-----	-----	---------	-----	---

- NOTES:**
- ALL DIMENSIONS IN MM [INCH]
  - GENERAL TOLERANCE: X.X=±0.4  
X.XX=±0.25
  - TERMINAL NUMBERS FOR REF ONLY
  - CONTACT RATING: CURRENT: 100mA  
VOLTAGE: 30 VDC
  - OPERATING LIFE: 50,000 MAKE-AND-BREAK CYCLES
  - INSULATION RESISTANCE: 500VDC, 100M OHM. MIN.
  - OPERATING FORCE: 250gf ± 100 GRAMS
  - OPERATING TEMP.: -20°C to 70°C
  - TRAVEL: MOMENTARY  
1.50 ± 0.3mm FULL TRAVEL
  - CONTACT RESISTANCE: 50 m OHM. MAX.
  - ▲ DENOTES CRITICAL PARAMETER.
  - 2002/95/EC (ROHS) COMPLIANT
  - LED COLOR: YELLOW

THE INFORMATION CONTAINED IN THIS DOCUMENT IS PROPRIETARY TO E-SWITCH AND IS NOT TO BE COPIED OR TRANSFERRED