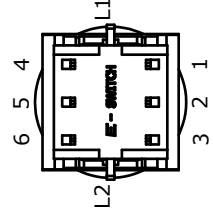
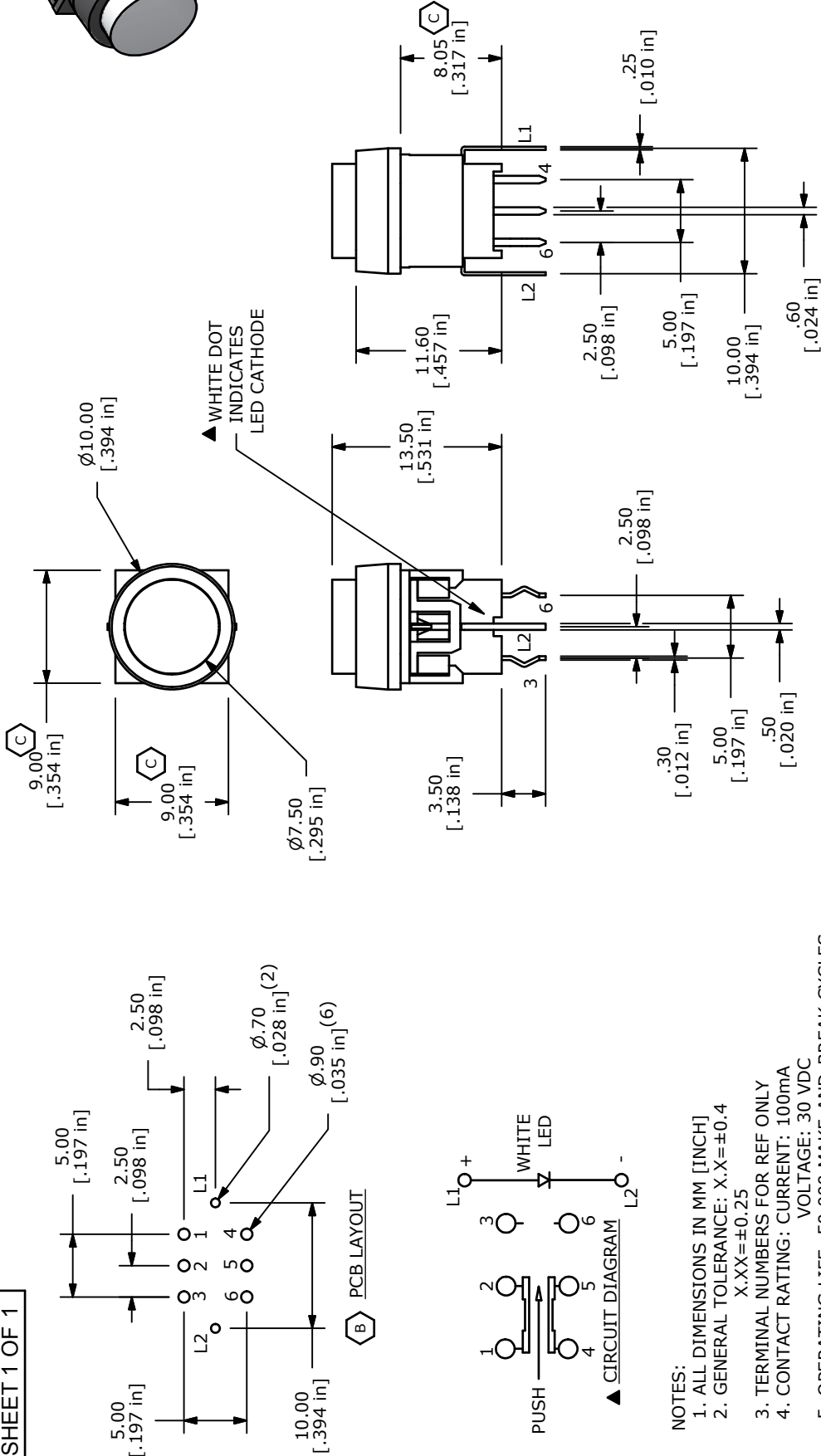


ISOMETRIC



LED SPECS	UNITS	WHITE
FORWARD CURRENT	mA	20
FORWARD VOLTAGE @20mA	V	3.5-4.0
LUMINOUS INTENSITY @ 10mA	MCD	2700



TITLE LP40A1PBBTW

C	19602	DRAWING UPDATE	1/19/11	BGL
B	18414	PCB LAYOUT SECTION FIXED	2/19/09	BLR
A	18361	RELEASE FOR PRODUCTION	12/22/08	BLR
REV	PCR NO	DESCRIPTION	DATE	BY

SCALE	2 = 1	DATE	2/19/2009	DR	BLR	DWG	B240017	REV	C
-------	-------	------	-----------	----	-----	-----	---------	-----	---

NOTES:

- ALL DIMENSIONS IN MM [INCH]
- GENERAL TOLERANCE: X.X=±0.4
X.XX=±0.25
- TERMINAL NUMBERS FOR REF ONLY
- CONTACT RATING: CURRENT: 100mA
VOLTAGE: 30 VDC
- OPERATING LIFE: 50,000 MAKE-AND-BREAK CYCLES
- INSULATION RESISTANCE: 500VDC, 100M OHM, MIN.
- OPERATING FORCE: 250gf ± 100 GRAMS
- OPERATING TEMP.: -20°C to 70°C
- TRAVEL: MOMENTARY
1.50 ± 0.3mm FULL TRAVEL
- CONTACT RESISTANCE: 50 m OHM, MAX.
- ▲ DENOTES CRITICAL PARAMETER.
- 2002/95/EC (ROHS) COMPLIANT
- LED COLOR: WHITE

THE INFORMATION CONTAINED IN THIS DOCUMENT IS PROPRIETARY TO E-SWITCH AND IS NOT TO BE COPIED OR TRANSFERRED