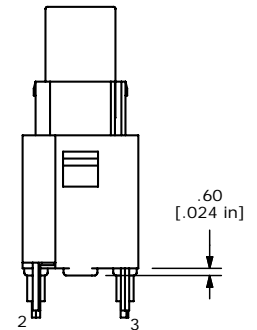
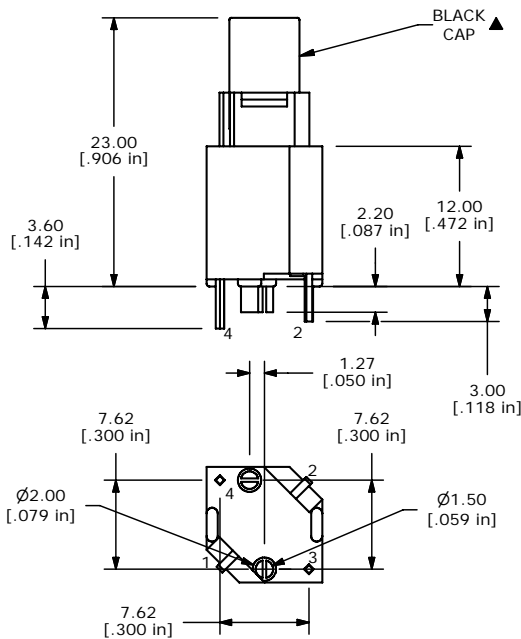
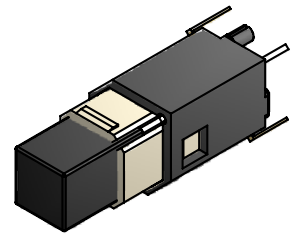
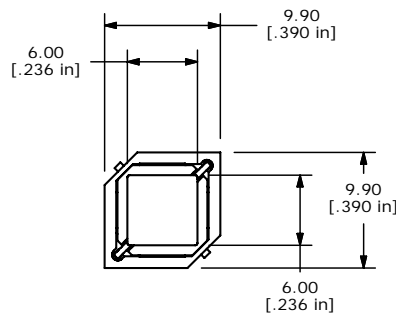
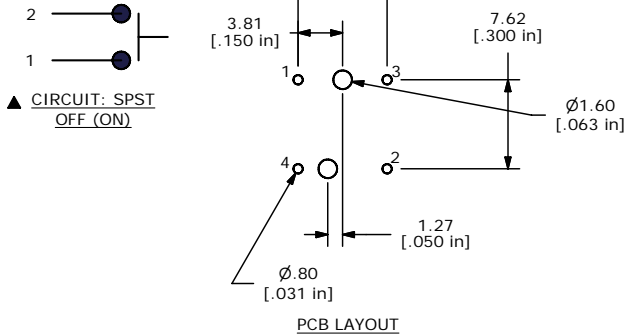


SHEET 1 OF 1



- NOTES:
1. ALL DIMENSIONS IN MM [INCH]
  2. GENERAL TOLERANCE: X.X=±0.4  
X.XX=±0.25
  3. RATING: 20VDC @ 1mA or 5VDC @ 5mA
  4. CONTACT RESISTANCE: 200Ω MAX. @ 5VDC, 1mA
  5. INSULATION RESISTANCE: 100MΩ MIN. @ 100VDC.
  - ▲ 6. OPERATING FORCE: 125±35gf
  7. TRAVEL: 1.3 +/-0.3 mm
  8. OPERATING TEMPERATURE: -20°C TO 70°C
  9. OPERATING LIFE: 300,000 CYCLES
  - ▲ 10. LED: NONE
  11. ▲ DENOTES CRITICAL PARAMETERS
  12. 2002/95/EC (ROHS) COMPLIANT



TITLE LP2S1BLKN-N

A	18647	NEW RELEASE	8/31/09	rc
REV	PCR NO	DESCRIPTION	DATE	BY

THE INFORMATION CONTAINED IN THIS DOCUMENT IS PROPRIETARY TO E-SWITCH AND IS NOT TO BE COPIED OR TRANSFERRED

SCALE	DATE	DR	DWG	REV
2 = 1	8/17/2009	RC	B250001	A