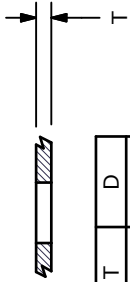


▲ LED SPECS		UNITS	RED
FORWARD CURRENT		mA	20
FORWARD VOLTAGE @20mA		V	1.5-2.4
LUMINOUS INTENSITY @ 10mA		MCD	300



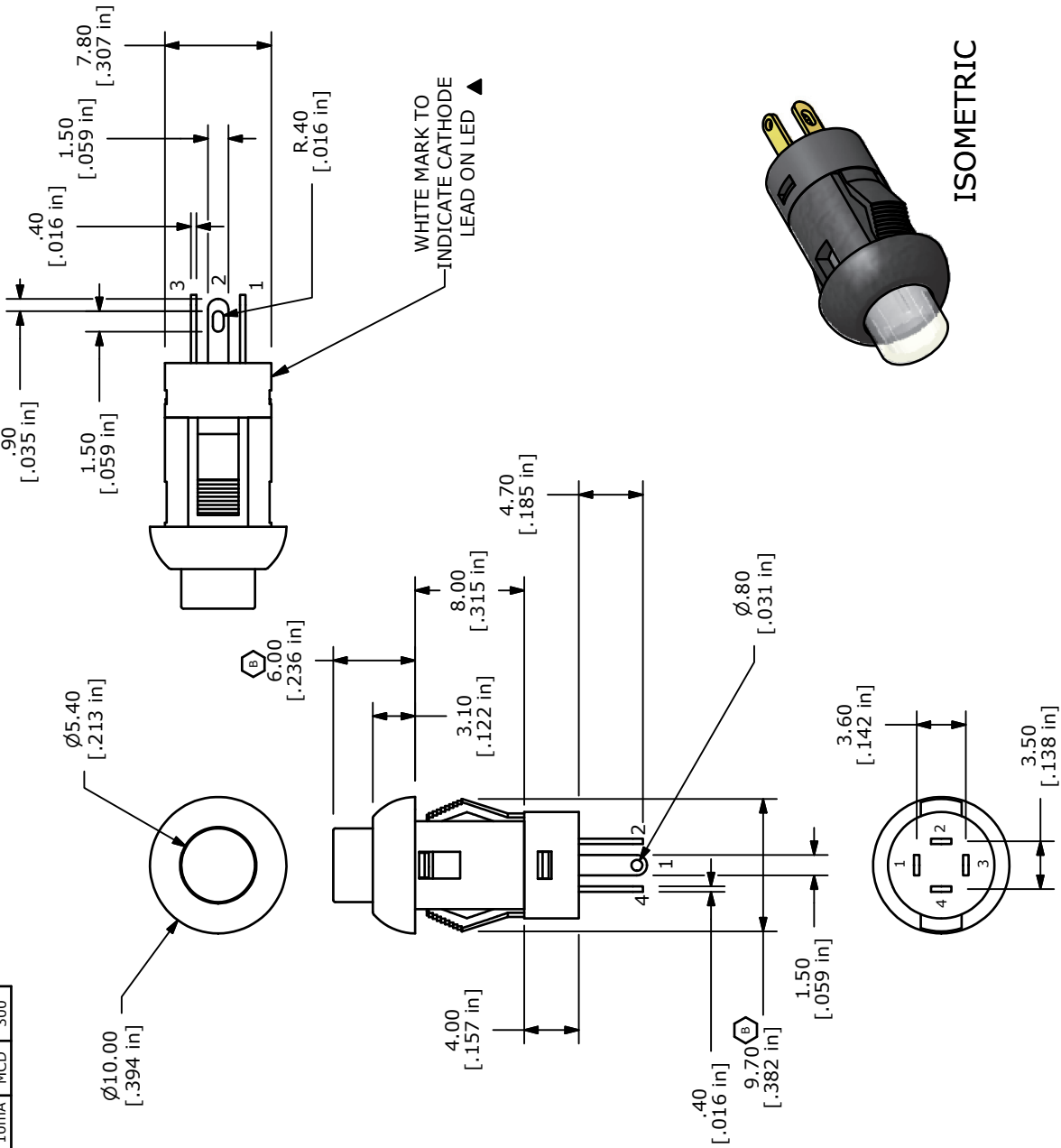
T	D
1.0-2.0	8.0-8.2
2.0-2.5	8.2-8.4
2.5-3.0	8.4-8.6



1 RED LED
CIRCUIT: SPST
OFF (ON) ▲

NOTES:

1. ALL DIMENSIONS IN MM [INCH]
 2. GENERAL TOLERANCE: X.X=±0.4
X.XX=±0.25
 3. RATING: 30VDC @ 100mA
 4. CONTACT RESISTANCE: 50mΩ MAX.
 5. INSULATION RESISTANCE: 100MΩ MIN@500VDC.
 6. OPERATING FORCE: 250±100gf
 7. TRAVEL: 1.8±0.3mm
 8. OPERATING TEMPERATURE: -40°C TO 85°C
 9. OPERATING LIFE: 50,000 CYCLES
- ▲ 10. LED: RED
1.1. ▲ DENOTES CRITICAL PARAMETERS
12. 2002/95/EC (ROHS) COMPLIANT



ISOMETRIC



E-SWITCH™

TITLE LP10A1AR

BGL

1/13/11

CHANGED DIMS: was 9.6 & 6.1

rc

9/24/08

New Release

DATE

DATE

DESCRIPTION

BY

DATE

DESCRIPTION

PCR NO

REV

THE INFORMATION CONTAINED IN THIS DOCUMENT IS PROPRIETARY TO E-SWITCH AND IS NOT TO BE COPIED OR TRANSFERRED

SCALE 2=1

DATE 7/10/2008

DR rc

DWG

B200200

REV B