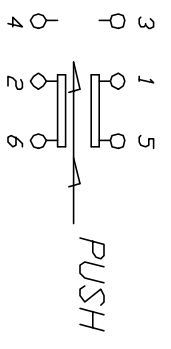
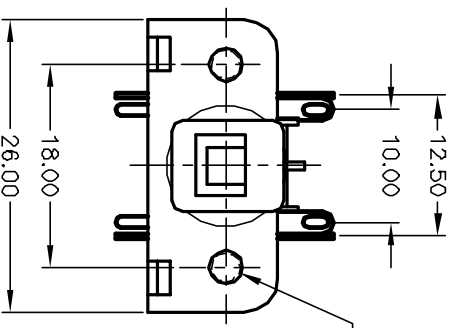
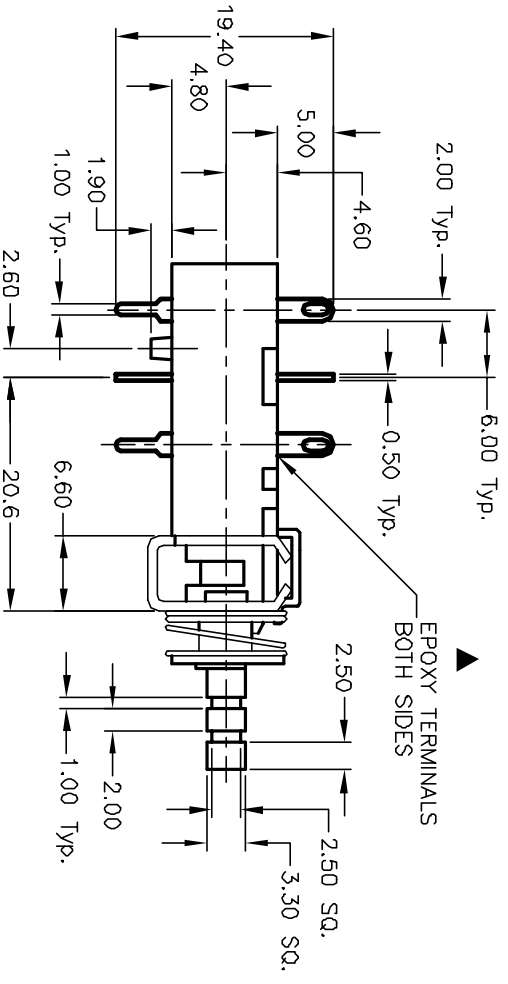


RECOMMEND P.C.B. LAYOUT
SCALE 2:1



CIRCUIT: DPDT
CONTACT CONFIGURATION

NOTES:

1. ALL DIMENSIONS IN MM
2. GENERAL TOLERANCE: X.X=±0.4
X.XX=±0.25
3. TERM. NOS. FOR REF. ONLY
4. RATING: AC 125V 7A, AC 250V 4A
5. CONTACT MATERIAL: Silver Plated Copper Alloy
6. CONTACT RESISTANCE: 20m ohm max. at 5V DC 1A.
7. DIELECTRIC STRENGTH: AC 1500V RMS
8. LIFE EXPECTANCY: Electrical: 6,000 cycle
9. OPERATING FORCE: 550±150gf
10. TRAVEL: Full: 5.5mm, Lock: 4.0mm

| | | | | |
|------|---------|--------------------------|----------|------|
| REV. | ECN No. | DESCRIPTION | DATE | CHKD |
| B | 11766 | REVISED PART DESCRIPTION | 10/19/01 | CB |

| | | | | | |
|---------------------------|-------|----------|----|---------|-----|
| TITLE | SCALE | DATE | DR | DWG | REV |
| P227 EE 2B 18A (LATCHING) | 1.5:1 | 10/19/01 | CB | P030104 | B |



THE INFORMATION CONTAINED IN THIS DOCUMENT IS PROPRIETARY TO E-SWITCH AND IS NOT TO BE COPIED OR TRANSMITTED