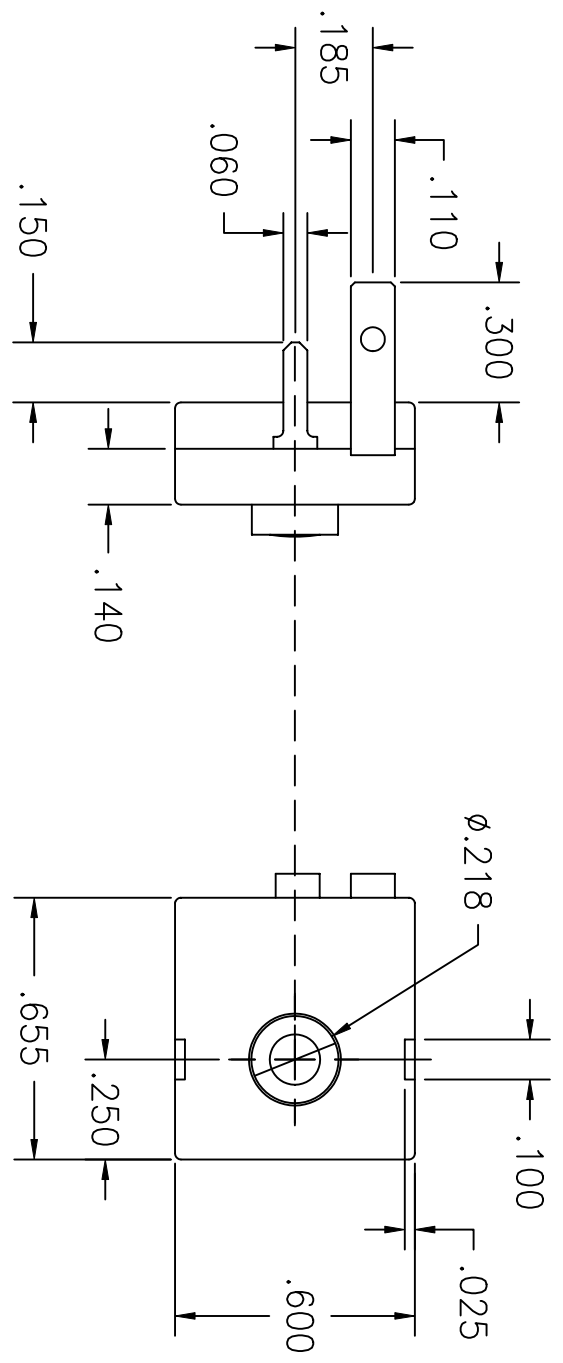
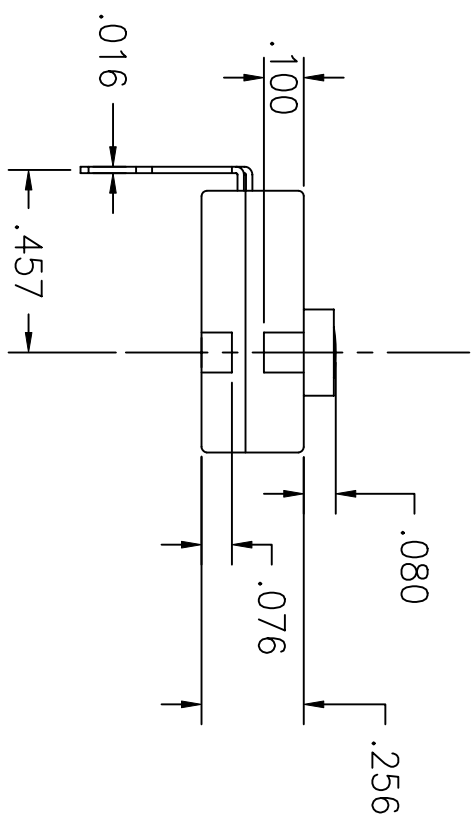


LTR	EN	DESCRIPTION	APPR	BY	DATE
A	-	INITIAL RELEASE	RB	EM	2-12-04
A1	-	CHG'D CUST PN WAS 563-0005-A	RB	EM	2-24-04



JUDCO INVENTORY NO. 40-1801-03  
 SWITCH TYPE: PUSH-ON, PUSH-OFF,  
 J-987-1P

CUSTOMER: DIGI KEY  
 CUST. PN: 514 PB-ND  
 APPROVED BY: \_\_\_\_\_  
 DATE: \_\_\_\_\_



DIMENSIONS IN INCHES  
 DIMENSIONS ARE REFERENCE

DRAWN: EM 02-12-04  
 APPR: KJ 02-12-04

DWG. NO. 1415-572  
 SHEET 1 OF 1

TITLE  
 HARBOR CITY CALIFORNIA  
 OUTLINE  
 J-987-1P

1415US72A1.DWG

This document embodies a product, component, and/or design proprietary to JUDCO MANUFACTURING INC., and which is protected either as a trade secret, by U.S. Patent, or by copyright. It may not be used in any way without written express consent of JUDCO MANUFACTURING INC.