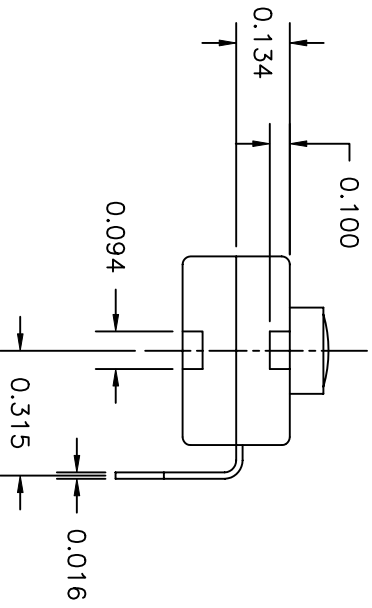
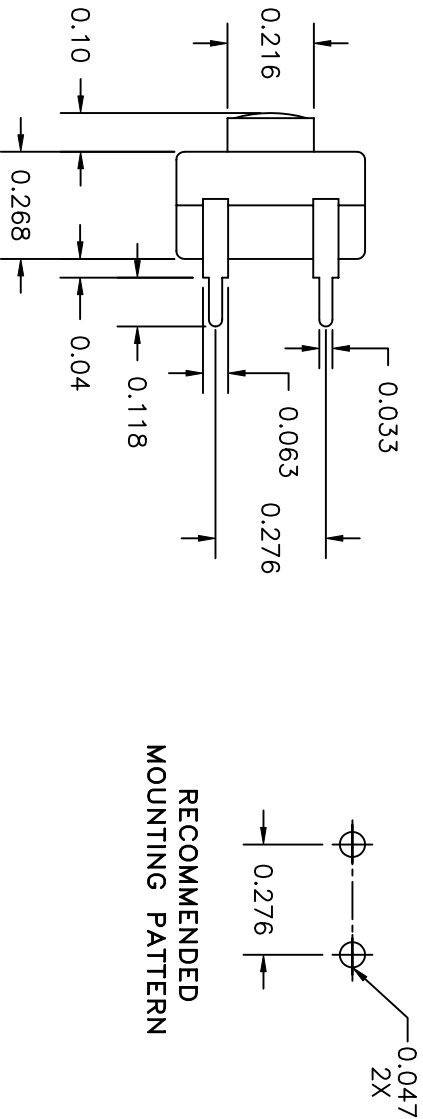
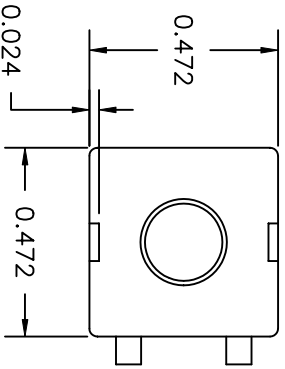


LTR	EN	DESCRIPTION	APPR	BY	DATE
A	-	INITIAL RELEASE	RB	EM	2-16-04



JUDCO INVENTORY NO. 50-0015-00  
 SWITCH TYPE: PUSH BUTTON, SPST, ON-OFF  
 UL ELECTRICAL RATING: 12VDC, 300MA

CUSTOMER: DIGI KEY  
 CUST. PN: 519 PB-ND

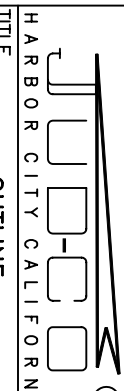
APPROVED BY: \_\_\_\_\_  
 DATE: \_\_\_\_\_

RECOMMENDED  
 MOUNTING PATTERN

DIMENSIONS IN INCHES  
 DIMENSIONS ARE REFERENCE

DRAWN: EM 02-16-04  
 APPR: KJ 02-16-04

1415US76A.DWG



TITLE  
 HARBOR CITY CALIFORNIA  
 J-977-1 SPST, 2 RA TRMS, ON-OFF  
 DWG. NO. 1415-576

SHEET

1 OF 1

This document embodies a product, component, and/or design proprietary to JUDCO MANUFACTURING INC., and which is protected either as a trade secret, by U.S. Patent, or by copyright. It may not be used in any way without written consent of JUDCO MANUFACTURING INC.