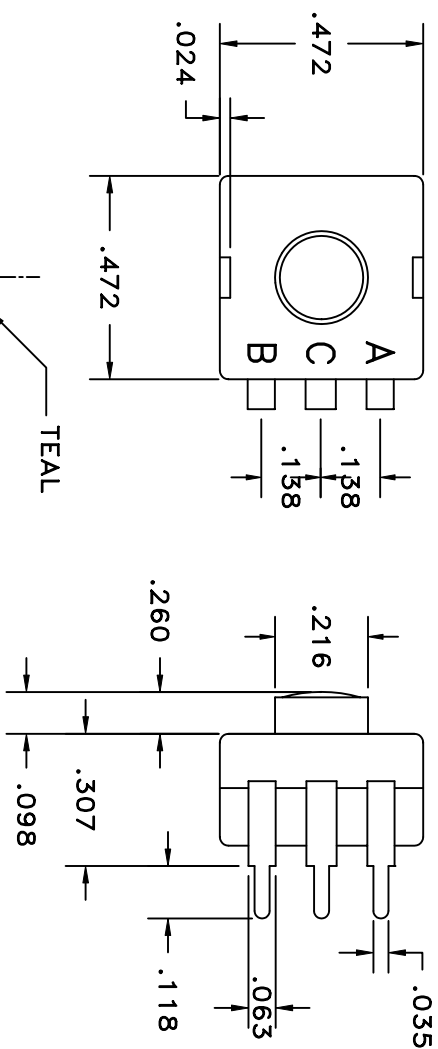
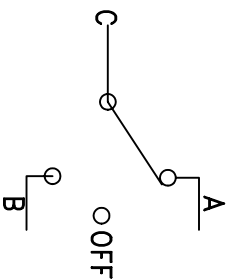
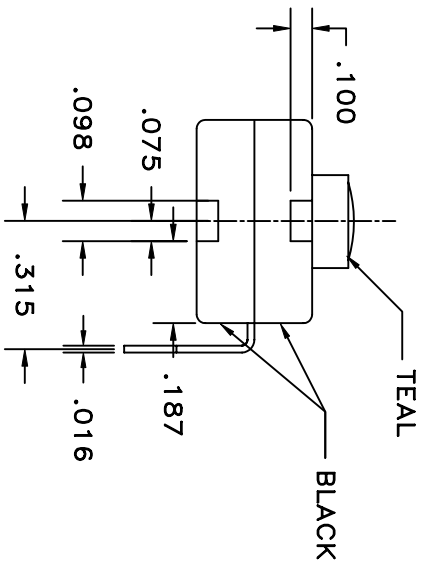
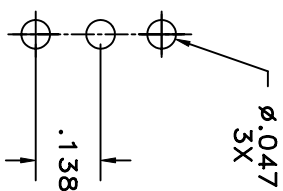


| LTR | EN | DESCRIPTION | APPR | BY | DATE |
|-----|----|--------------------------------|------|----|----------|
| A | - | INITIAL RELEASE | RB | NH | 09-30-05 |
| A1 | - | ADDED CUSTOMER PART NUMBER. | RB | DC | 12-20-05 |
| A2 | - | ADDED COLOR OF ACTUATOR (TEAL) | RB | DC | 12-28-05 |



RECOMMENDED MOUNTING PATTERN



SCHEMATIC

JUDCO INVENTORY NO. 50-0088-00
 SWITCH TYPE: SPDT, J 977-8 (ON A- ON B-OFF)

CUSTOMER: DIGI-KEY
 CUSTOMER PN: 542PB-ND
 APPROVED BY: _____
 DATE: _____

DIMENSIONS IN INCHES
 DIMENSIONS ARE REFERENCE

| | | |
|--|----------|--|
| DRAWN: NH | 09-30-05 | |
| APPR: KJ | 12-28-05 | |
| TITLE MINI FLPK, J977-8 W/BENT TERMINALS | | |
| DWG. NO. 1415-862 | | |
| SHEET 1 OF 1 | | |

This document embodies a product, component, and/or design proprietary to JUDCO MANUFACTURING INC., and which is protected either as a trade secret, by U.S. Patent, or by copyright. It may not be used in any way without written express consent of JUDCO MANUFACTURING INC.