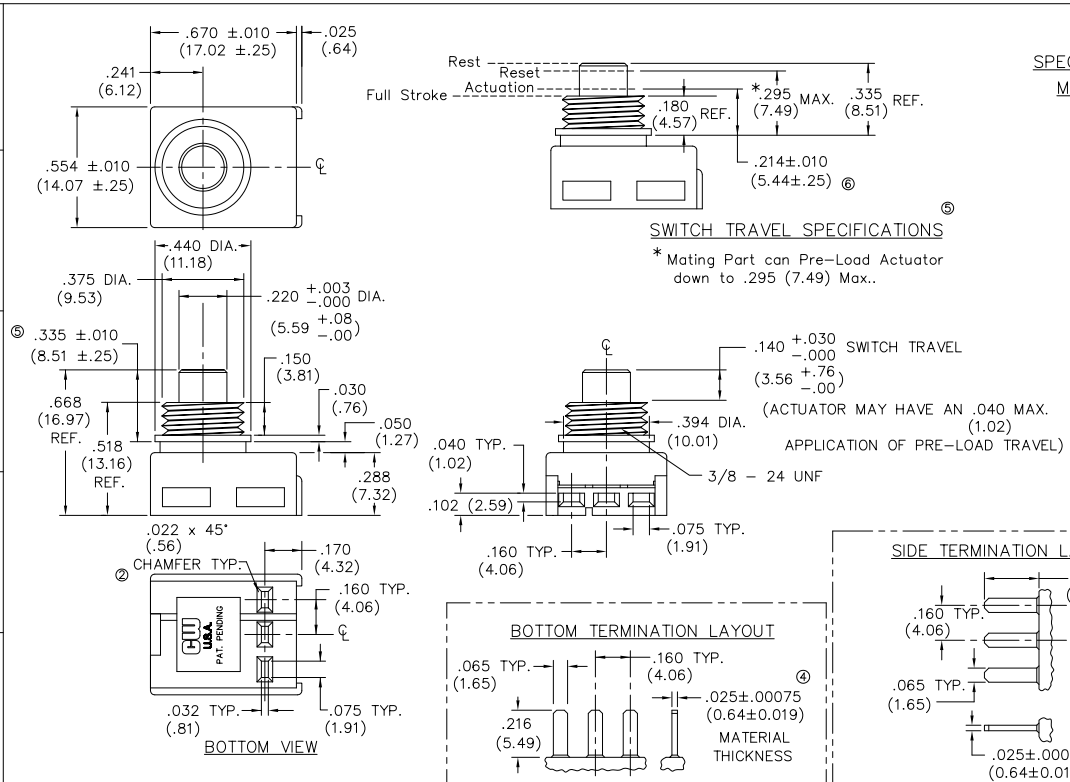
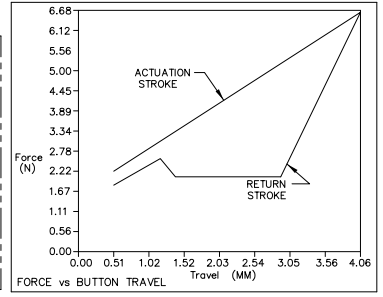


E  
D  
C  
B  
A



DIMENSIONS IN INCHES (MILLIMETERS) Dwg. No.  
DO NOT SCALE DRAWING ..... GC-536-0002

**SPECIFICATIONS:**  
**MATERIALS:**  
HOUSING & BASE - Nylon and or Glass Filled Nylon 6/6 UL 94-V2 minimum  
ACTUATOR - Nylon 6/6 UL 94-V2 minimum  
MOVING CONTACT - Copper Alloy/Phos. Bronze Silver Plated  
STATIONARY CONTACT - BeCu 174 Alloy/75µin. Silver Plated  
ELECTRICAL RATING - 1A. 125V.A.C.  
3A. 14V.D.C.  
MECHANICAL PERFORMANCE - 30,000 Cycles minimum at Rated Load.  
OPERATING FORCE - 20 - 31ozs.,  
5.6 - 8.6 Newtons,  
Spec. as Tested  
VOLTAGE DROP - .030V. MAX @ .7A  
TERMINATION - Insert male tabs into switch housing using side or bottom termination option. Refer to termination option layout for dimensions."



|   |   |  |  |   |   |   |   |   |    |
|---|---|--|--|---|---|---|---|---|----|
| 1   | 2   | 3  | 4  | 5   | 6 | 7 | 8 | 9 | 10 |
| REVISIONS                                   | ADDED FORCE vs BUTTON TRAVEL CURVE  | ADDED .00075 TOL. TO .025 IN. SIDE & BOT. LAYOUTS.                                     | REDRAWN, ADDED SWITCH TRAVEL SPEC'S. ADDED .335±.010 TO FRONT VIEW. REMOVED .150 +.020 FROM SIDE VIEW.                                     | ADDED .025±.00075 MATERIAL THICKNESS  |   |   |   |   |    |
| 0<br>RELEASED.<br>DWG 4-07-98<br>CH 4-08-98 | 2<br>REDRAWN, ADDED METRIC DIMS. & .022 x 45° TO CHAMFER. UPDATED OPERATING FORCE.<br>DWG 4-05-2002<br>GG | 3<br>ADDED .00075 TOL. TO .025 IN. SIDE & BOT. LAYOUTS.<br>DWG 8-05-2003<br>CH 8-10-03 | 4<br>REDRAWN, ADDED SWITCH TRAVEL SPEC'S. ADDED .335±.010 TO FRONT VIEW. REMOVED .150 +.020 FROM SIDE VIEW.<br>DWG 8-26-2003<br>CH 8-26-03 | 5<br>ADDED .025±.00075 MATERIAL THICKNESS<br>DWG 22-08-2005<br>CH FEB. 22, 2005 |   |   |   |   |    |

**PDF FILE MADE**

**GW INDUSTRIES**  
Southampton, Pa. 18966

TOLERANCES UNLESS OTHERWISE SPECIFIED  
2 Place Decimal ±.010 METRIC  
3 Place Decimal ±.005 1 Place Dec. ±.25mm  
Angles ..... ±1' 2 Place Dec. ±.13mm

Made for: CW IND.  
Drawn by: DGW 4-07-98  
Checked by: GG 8-28-03  
Approval: CH 8-28-03

Title: SWITCH ASSEMBLY  
PUSH ON-PUSH OFF  
S.P.D.T.  
Division: SWITCH  
Dwg. No. GC-536-0002