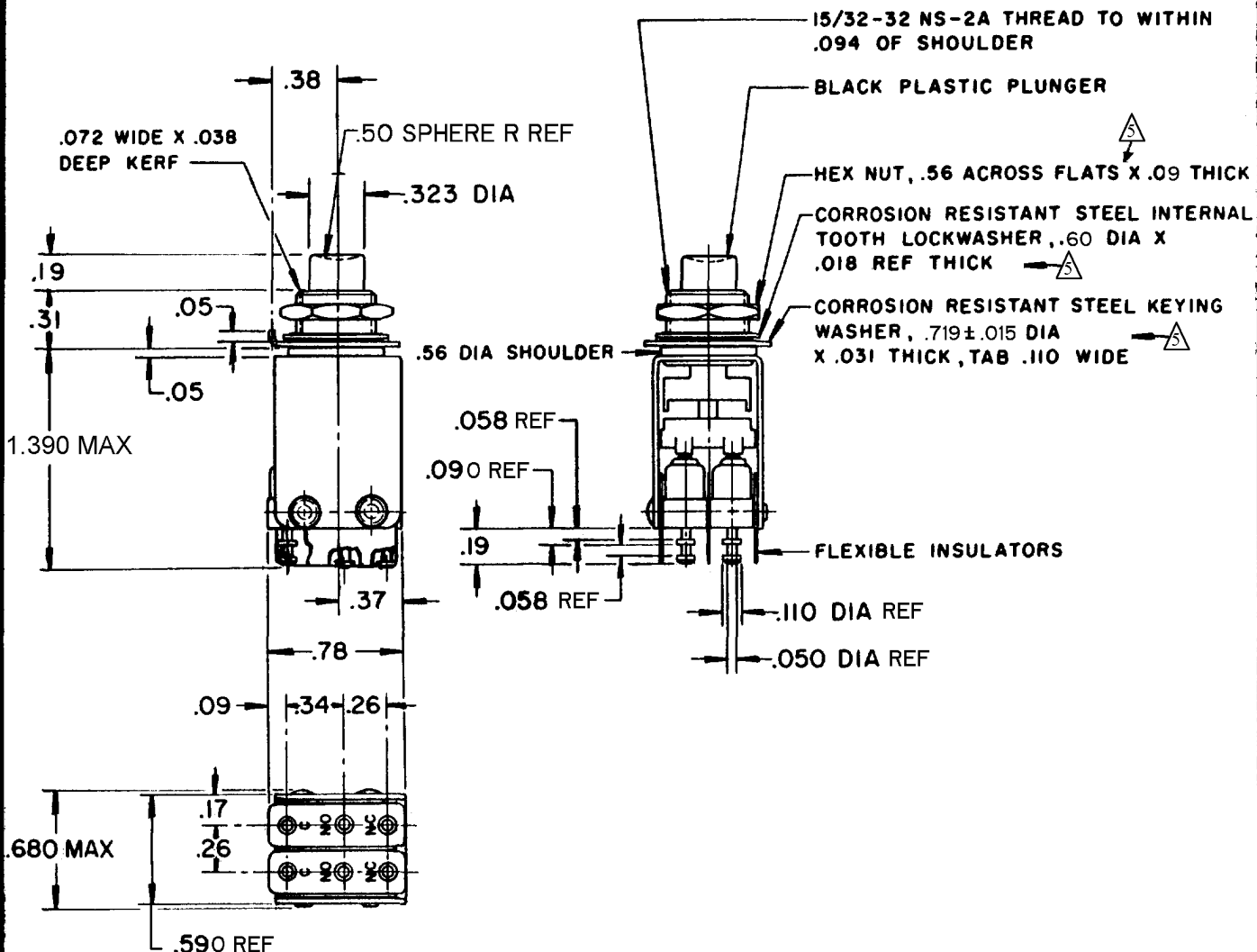


CATALOG LISTING  
**82PB19-T2**  
PAGE 1 OF 1  
ISSUE **M**  
**9**  
REVISIONS  
A CO14601  
L S D  
11 APR 60  
B CO 15520  
K L B  
31 JULY 61  
C CO20521  
W E G  
22 FEB 67  
D CO92699  
J A K  
12 MAR 98  
C CO-  
93593  
P P F  
29 OCT 98  
D CO-  
94273  
G J W  
15 APR 99  
E CO18511  
SV  
23 FEB 06  
F 0038194  
PK  
09 APR 08  
REPLACES  
SR 8701  
RELEASE NO. 09APR08  
ASD  
CHECK  
J A F  
CHECK  
22 DEC 59  
CHECK  
22 DEC 59  
DRAWN  
M B F  
22 DEC 59



- NOTES
- 1 -UNIT INCLUDES CAT.LIST.311SM TYPE BASIC SWITCH (2)
  - 2 -TERMINALS ARE PLATED FOR SOLDERING
  - 3 -SWITCHES DO NOT NECESSARILY OPERATE SIMULTANEOUSLY
  - 4 -ALTERNATE ACTION MECHANISM (PUSH-ON, PUSH-OFF ACTUATION)
  - 5 -MOUNTING HARWARE FURNISHED UNASSEMBLED

THIS DRAWING COVERS A PROPRIETARY ITEM AND IS THE PROPERTY OF MICRO SWITCH, A DIVISION OF MINNEAPOLIS-HONEYWELL REGULATOR CO. THIS DRAWING IS NOT TO BE COPIED OR USED WITHOUT THE APPROVAL OF MICRO SWITCH.

CHARACTERISTICS	ELECTRICAL DATA	SCALE -
OPERATING FORCE --- 35 OZ APPROX	CONTACT ARRANGEMENT S P D T (2)	DO NOT SCALE PRINT
	250 VAC --- 5 AMP	UNLESS OTHERWISE SPECIFIED
	30 VOLTS DC RATING	DIMENSIONS ARE IN INCHES
	INDUCTIVE --- SEA LEVEL --- 3 AMP	<b>TOLERANCES ARE:</b>
	50,000 FT. --- 2.5 AMP	ONE PLACE (.0) ± .030
	RESISTIVE --- SEA LEVEL --- 5 AMP	TWO PLACE (.00) ± .015
	50,000 FT. --- 5 AMP	THREE PLACE (.000) ± .008
	MAXIMUM INRUSH --- 24 AMP	ANGLES ±
		WEIGHT