



MICRO SWITCH
FREEPORT, ILLINOIS, U.S.A.
A DIVISION OF HONEYWELL

FED. MFG. CODE 91929

ASSEMBLY - PUSHBUTTON SWITCH

CATALOG LISTING

2PB12-T2

2PB12-T2
PAGE 1 OF 1
REPLACES

M
DRAWING NUMBER
X8
ISSUE

RELEASE NO.

REVISIONS

A	CO 19800	MBF	28 JAN 65
B	CO31782	DBW	16 MAR 73
C	CO-93593	PPF	23 OCT 98
D	CO-94273	GJW	15 APR 99

CHECK

23 OCT 98

JAF

23 OCT 98

CHECK

3 FEB 65

LS

28 JAN 65

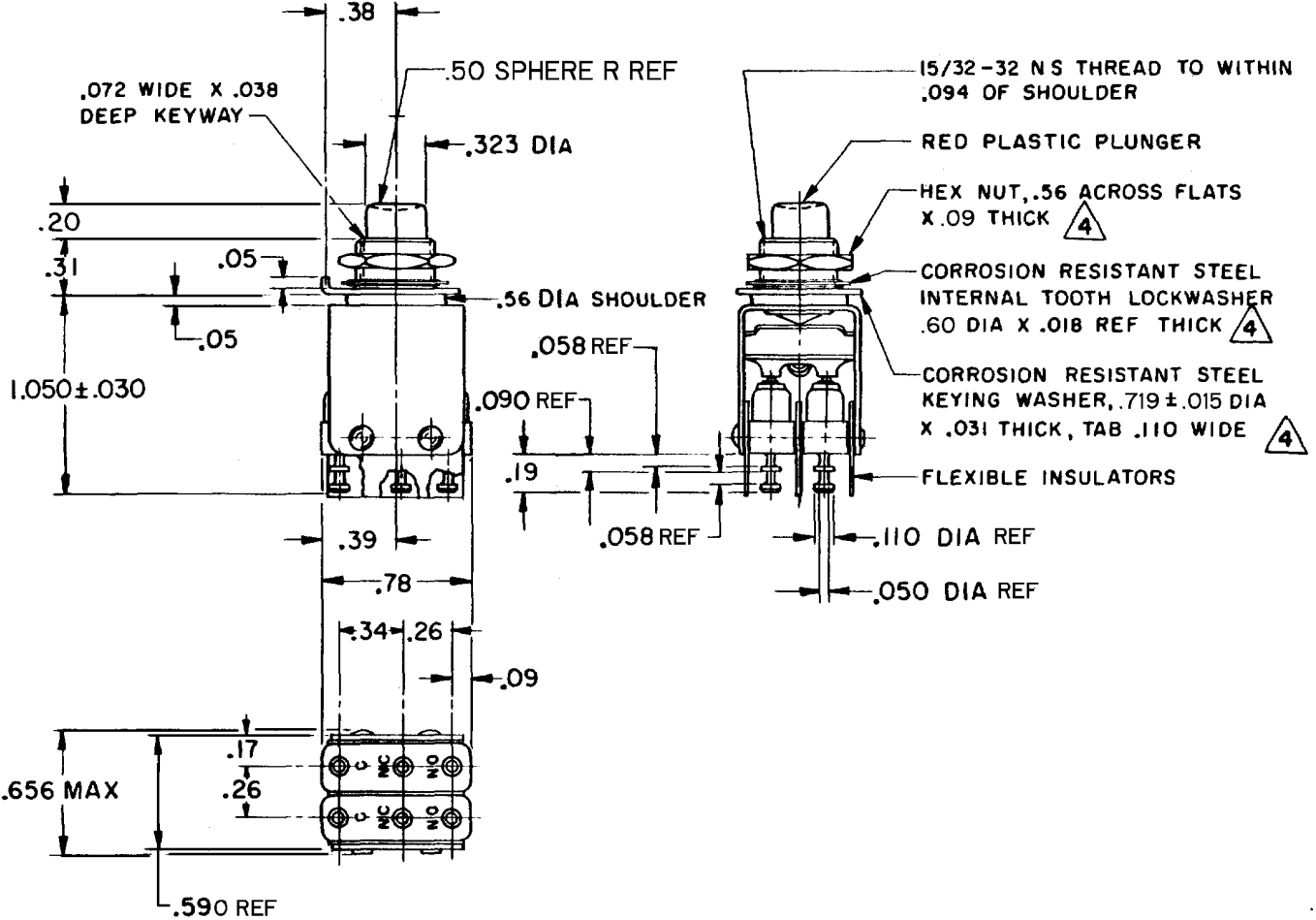
CHECK

DRAWN

MBF

28 JAN 65

FORMTEK
FO-50378



NOTES

- 1 - UNIT INCLUDES "ISM" TYPE BASIC SWITCH (2)
- 2 - TERMINALS ARE PLATED FOR SOLDERING
- 3 - SWITCHES DO NOT NECESSARILY OPERATE SIMULTANEOUSLY
- 4 (triangle) MOUNTING HARDWARE FURNISHED UNASSEMBLED

THIS DRAWING COVERS A PROPRIETARY ITEM AND IS THE PROPERTY OF MICRO SWITCH, A DIVISION OF HONEYWELL. THIS DRAWING IS NOT TO BE COPIED OR USED WITHOUT THE APPROVAL OF MICRO SWITCH.

CHARACTERISTICS

OPERATING FORCE --- -30 OZ APPROX
TOTAL TRAVEL --- - .100 APPROX

ELECTRICAL DATA

CONTACT ARRANGEMENT
S P D T (2)

250 VAC --- - - - - - 5 AMP

30 VOLTS DC RATING

INDUCTIVE --- - SEA LEVEL --- - 3 AMP
50,000 FT --- - 2.5 AMP

RESISTIVE --- - SEA LEVEL --- - 5 AMP
50,000 FT --- - 5 AMP

MAXIMUM INRUSH --- - - - - 24 AMP

SCALE FULL

DO NOT SCALE PRINT

UNLESS OTHERWISE NOTED
DIMENSIONS ARE IN INCHES

TOLERANCES ARE:

ONE PLACE	(.0)	±.030
TWO PLACE	(.00)	±.015
THREE PLACE	(.000)	±.005
ANGLES		±

WEIGHT