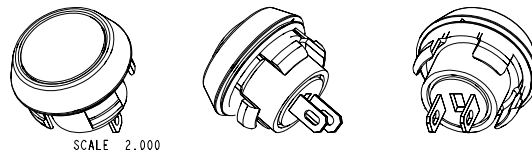


- NOTES:
 1. CUSTOMER: GRAYHILL STD.
 2. SWITCH HAS BUTT CONTACT SYSTEM.
 3. ACTION TYPE: MOMENTARY
 4. CIRCUITRY: SPST - N.O.



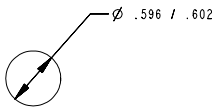
SCALE 2.000

YYWW

GH

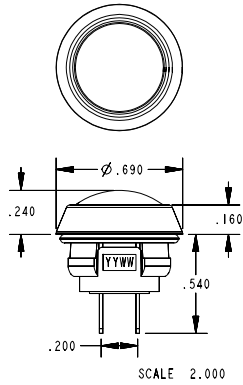
LABEL DETAIL

SCALE: 5:1
 LABEL PART NUMBER: SSS1878-14
 DATE CODE & *GH* TO
 INDICATE MANUFACTURER'S NAME

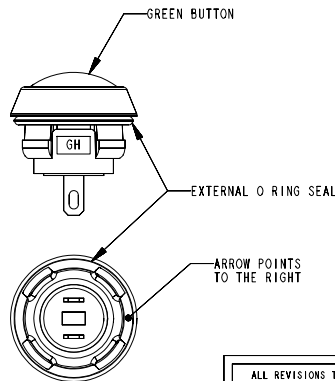


RECOMMENDED PANEL CUT-OUT
 SCALE: 1 TO 1

PANEL THICKNESS WITH *O* RING: .098-.106
 PANEL THICKNESS WITHOUT *O* RING: .140-.144



SCALE 2.000



ALL REVISIONS TO THIS DRAWING
 MUST BE MADE ON THE PRO/E SYSTEM

B	CWS/JOD 1-26-05	ADDED ARROW NOTE. ECN#355542 JTK 1-26-05
A	CWS/PR 6-9-04	ORIGINAL ECN#352012 5-11-04
ISSUE	APP/DATE	DESCRIPTION
REVISIONS		
GRAYHILL, INC. 581 HILLGROVE AVE. LA GRANGE, IL 60525 PHONE (708) 354-1040		
UNLESS OTHERWISE SPECIFIED TOLERANCES AND DIMENSIONS ARE IN INCHES		
LINEAR ± .025 DIAMETERS ± .010		
ANGULAR ± 1.0°		
LIMITS APPLY BEFORE FINISHING		
DO NOT SCALE THIS PRINT		
CRITICAL CHARACTERISTIC FLAGS PER GRAYHILL SPEC.SOP2338		
◻	-- CRITICAL CHARACTERISTIC FLAG	
◻	-- Cpk REQUIRED	
◻	-- S.P.C. FLAG (CONTROL CHART REQ'D ON FEATURE SPECIFIED)	
FINISH	---	APPROVED DATE PR 6-9-04
MATERIAL	---	CHECKED DATE CWS 6-9-04
NAME PUSHBUTTON ASSEMBLY		DRAWN DATE JTK 5-11-04
CAGE NO.	81073	30-102.DRW
SIZE	DWG. NO. 30-102	ISSUE B
SCALE	2:1	SHEET 1 OF 1

COMPONENT	MATERIAL
BUTTON	GREEN NYLON - 45% GLASS FILLED
HOUSING	BLACK NYLON - 45% GLASS FILLED
TERMINAL	BRASS - GOLD OVER NICKEL PLATING
SHORTING BAR	BRASS - GOLD OVER NICKEL PLATING
BASE	NYLON - 45% GLASS FILLED
PLUNGER	NYLON - 45% GLASS FILLED
O-RING SEAL	SILICON - 70 DUROMETER
INTERNAL SEAL	SILICON RUBBER
COMPRESSION SPRING	TINNED MUSIC WIRE

MECHANICAL RATINGS	
TRAVEL	.090" NOMINAL
TRAVEL BEFORE MAKE	.035" NOMINAL
CYCLE LIFE	500,000 ELECTRICAL CYCLES
SHOCK	100 G'S / 6 MILLISECONDS
OPERATING TEMP.	-40° C TO +80° C
ACTUATION FORCE	14.5 OZ ± 3 OZ.

ELECTRICAL RATINGS	
RATING AT 24 VDC	150 MILLIAMPS
VOLTAGE BREAKDOWN	1,000 VOLTS
CONTACT RESISTANCE	25 mΩ MAX. (INITIAL)
INSULATION RESISTANCE	1000 MΩ