

4

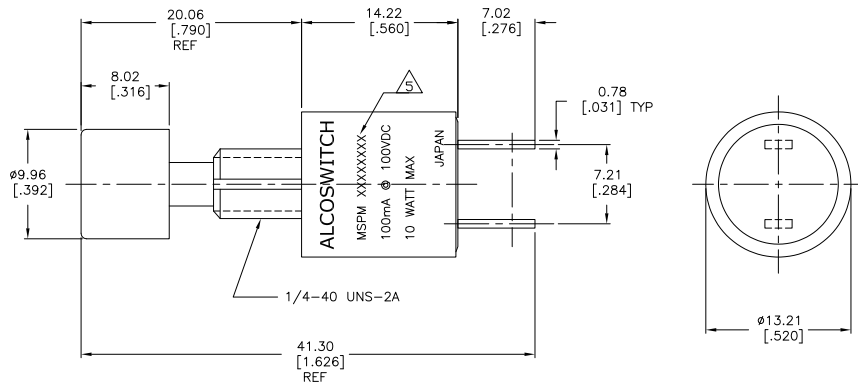
3

2

1

THIS DRAWING IS UNPUBLISHED. RELEASED FOR PUBLICATION. ALL RIGHTS RESERVED.

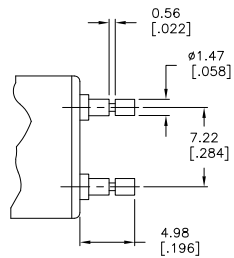
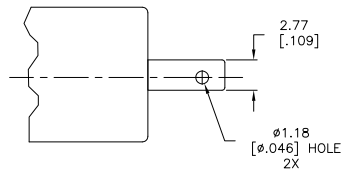
LOC	DIST	REVISIONS			
F	LNK	DESCRIPTION	DATE	BY	APPD
A2		REVISED PER ECO-11-004820	11MAR11	RK	HMR



## NOTES:

- TERMINAL NUMBERS ARE FOR REFERENCE ONLY AND DO NOT APPEAR ON SWITCHES.
- EACH SWITCH SUPPLIED WITH THE FOLLOWING MOUNTING HARDWARE:  
(1) DECORATIVE NUT  
(1) HEX NUT  
(1) INTERNAL TOOTH LOCKWASHER  
(1) LOCATING RING
- ALL MATERIALS AND FINISHES SHALL COMPLY WITH EU DIRECTIVE 2002/95/EC OF 27JAN2003 (ROHS).
- LUG TERMINALS ACCEPT STANDARD .110 QUICK CONNECT RECEPTACLES. PIN TERMINALS USEABLE FOR PCB APPLICATIONS.

△5 MARK PER ALCO P/N COLUMN



PIN	RED	NORMALLY OPEN	1	1	MSPM101C204	1825538-4
LUG	RED	NORMALLY OPEN	1	1	MSPM101C104	1825538-3
LUG	BLACK	NORMALLY CLOSED	1	1	MSPM101B104	1825538-2
PIN	BLACK	NORMALLY CLOSED	1	1	MSPM101B004	1825538-1
TERMINAL STYLE	CAP	COLOR	ACTION	THROWS	POLES	ALCO P/N △5 PART NO.

DIMENSIONS		TOLERANCES UNLESS OTHERWISE SPECIFIED		14APR02		TE Connectivity	
mm	[INCHES]			L/M	CHK	DATE	NAME
0 PLG ± .1		1 PLG ± .1		12JAN08		J. SYLVIA	
1 PLG ± .1		2 PLG ± .1				PRODUCT SPEC	
2 PLG ± .1		3 PLG ± .010				APPLICATION SPEC	
3 PLG ± .1		4 PLG ± .1				SIZE CASE CODE DRAWING NO	
4 PLG ± .1		ANGLES ± 1°				RESTRICTED TO	
MATERIAL SEE SPECIFICATIONS		FINISH		CUSTOMER DRAWING		SCALE 4:1 SHEET 1 of 2 REV A2	

1471-9 (3/11)

1825538

B

A

4

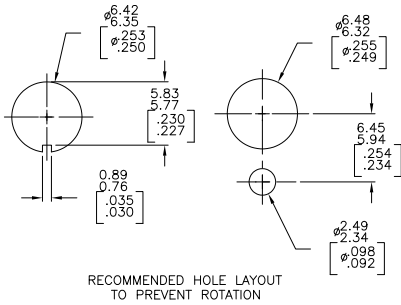
3

2

1

THIS DRAWING IS UNPUBLISHED. RELEASED FOR PUBLICATION. ALL RIGHTS RESERVED.

LOC	DIST	REVISIONS		
F	LNK	DESCRIPTION	DATE	BY
AD	00	SEE SHEET 1	-	-



MATERIALS		
COMPONENT NAME	BASE MATERIAL	FINISH
CASE	STEEL	
ACTUATOR BUTTON	POLYAMIDE, SEE CHART FOR COLOR	
MOVING CONTACT	COPPER ALLOY	GOLD OVER NICKEL
FIXED CONTACT	COPPER ALLOY	GOLD OVER NICKEL
TERMINALS	COPPER ALLOY	SILVER OVER NICKEL

SPECIFICATIONS	
RATING	1.0VA OPTIMUM (100mA MAX., 50 VDC MAX.)
INITIAL CONTACT RESISTANCE	100 MILLIOHMS
INSULATION RESISTANCE	1000 MEGOHMS MIN.
DIELECTRIC WITHSTANDING VOLTAGE	1000 VRMS AT SEA LEVEL
DURABILITY	5000000 CYCLES AT .1VA
	50000 CYCLES AT 5VA
OPERATING FORCE	TACTILE KEYBOARD FEEL 4 TO 7 OZ. BREAKAWAY REDUCING
	IMMEDIATELY TO 1.5 OZ. FOLLOW-THROUGH
TRAVEL	2.00±0.20 [.079±.008]
OPERATING TEMPERATURE	-10C TO +80C
STORAGE TEMPERATURE	-10C TO +80C

THIS DRAWING IS A CONTROLLED DOCUMENT.		DRW L.M. CHK -	14AP082 -	TE Connectivity			
DIMENSIONS mm [INCHES]	TOLERANCES UNLESS OTHERWISE SPECIFIED	J. SYLVIA PRODUCT SPEC. 12JAN98 NAME APPLICATION SPEC. - WEIGHT - FINISH -					
 MATERIAL SEE SPECIFICATIONS	0 P.L.C. ± - 1 P.L.C. ± - 2 P.L.C. ± - 3 P.L.C. ± .010 4 P.L.C. ± ± 1° ANGLES ± ± 1°	SIZE A2	CASE CODE 00779	DRAWING NO. C=1825538	RESTRICTED TO -		
CUSTOMER DRAWING		SCALE	4:1	SHEET	2 of 2	REV	A2

1471-9 (3/11)

1825538

A