

Component name	Base material	Finish
Case	LCP, black, UL94 V-0	
Terminal, wire lug (gold)	Brass	Gold over nickel
Terminal, PC, RA & VRA (gold)	Brass	Gold over nickel in contact area, Tin over nickel in solder area
Terminal, PC & wire lug (silver)	Silver clad copper	Silver over nickel
Contact (gold)	Copper alloy or brass	Gold over nickel
Contact (silver)	Silver clad copper or copper	Silver over nickel
Frame	Steel	Tin over copper
Spring	Music wire	
Plunger Button	Nylon 6/6, black, red or blue, UL94 HB (extended) or UL94V-2 (flush)	
Support bracket (RAES versions only)	Brass	Tin over copper
Support bracket, VRA	Steel	Tin over copper
Bushing	Brass	Nickel over copper
ES Housing (ES versions)	Nylon 6/6, natural, UL94 V-2	
ES boot (ES versions)	Vinyl plastisol, black	

Model	Actuator	Poles	Rating	Function	Plating	Terminations	Process Seal	Button color	04
TPB	Blank = extended	1	1 = Gold .4VA 3 = Silver 1 Amp 1	C = SPST momentary F = SPDT momentary M = DPST momentary R = DPDT momentary	G = Gold Blank = Silver 1	Blank = Wire lug PC = printed circuit RA = right angle 2 VRA = vertical right angle 3	ES = process sealed 2	0 = Black 2 = Red 6 = Blue	

NOTES:
 1. Silver only available in wire lug and pc terminations
 2. RAES available with B and C button only
 3. VRA only available in single pole

Specifications	
Rating	Gold: .4VA max, @ 20VDC or peak AC resistive Silver: 1 A @ 125VAC or 28 VDC resistive
Initial termination resistance	20 milliohms max.
Insulation resistance	1,000 Megohms min @ 500 VDC
Dielectric strength	1,000 volts RMS at sea level
Timing	Break before make
Plunger travel	.030
Actuation force	50 to 400 grams
Life expectancy	.4 VA, 1 pole: 100,000 .4 VA, 2 poles: 80,000 1 A, 1 pole: 60,000 1 A, 2 poles: 50,000
Operating temperature	-30° C to +65° C
Storage temperature	-30° C to +65° C
Terminal seal	Single pole: epoxy Double pole: epoxy optional

PIN	Alco PIN	Flush Actuator?	Poles	Throws	Plating	Terminals	Process sealed?	Button Color	Function	Connected Terminals	Dim A
1825097-1	TPB11CGPC004	no	1	1	Gold	PC	No	Black	Off	Off	1-3
1825097-2	TPB11CGPC204	no	1	1	Gold	PC	No	Red	Off	Off	1-3
1825097-3	TPB11CGPCES004	no	1	1	Gold	PC	yes	Black	Off	Off	1-3
1825097-4	TPB11CGRA004	no	1	1	Gold	Right Angle	No	Black	Off	Off	1-3
1825097-5	TPB11CGRA204	no	1	1	Gold	Right Angle	No	Red	Off	Off	1-3
1825097-6	TPB11CGRAES004	no	1	1	Gold	Right Angle	yes	Black	Off	Off	1-3
1825097-7	TPB11CGRAES204	no	1	1	Gold	Right Angle	yes	Red	Off	Off	1-3
1825097-8	TPB11CGVRA004	no	1	1	Gold	VRA	No	Black	Off	Off	1-3
1825097-9	TPB11FGPC004	no	1	2	Gold	PC	No	Black	On	Off	1-2, 2-3
1-1825097-0	TPB11FGPCES204	no	1	2	Gold	PC	yes	Red	On	Off	1-2, 2-3
1-1825097-1	TPB11FGRA004	no	1	2	Gold	Right Angle	No	Black	On	Off	1-2, 2-3
1-1825097-2	TPB11FGRA204	no	1	2	Gold	Right Angle	No	Red	On	Off	1-2, 2-3
1-1825097-3	TPB11FGRA604	no	1	2	Gold	Right Angle	No	Blue	On	Off	1-2, 2-3
1-1825097-4	TPB11FGRAES004	no	1	2	Gold	Right Angle	yes	Black	On	Off	1-2, 2-3
1-1825097-5	TPB11FGRAES604	no	1	2	Gold	Right Angle	yes	Blue	On	Off	1-2, 2-3
1-1825097-6	TPB11FGVRA004	no	1	2	Gold	VRA	No	Black	On	Off	1-2, 2-3
1-1825097-7	TPB21MGR0004	no	2	1	Gold	PC	No	Black	Off	Off	1-3, 4-6
1-1825097-8	TPB21MGRPC204	no	2	1	Gold	PC	No	Red	Off	Off	1-3, 4-6
1-1825097-9	TPB21MGRPCES004	no	2	1	Gold	PC	yes	Black	Off	Off	1-3, 4-6
2-1825097-0	TPB21MGR0004	no	2	1	Gold	Right Angle	No	Black	Off	Off	1-3, 4-6
2-1825097-1	TPB21MGR204	no	2	1	Gold	Right Angle	No	Black	Off	Off	1-3, 4-6
2-1825097-2	TPB21MGR204	no	2	1	Gold	Right Angle	No	Red	Off	Off	1-3, 4-6
2-1825097-3	TPB21MGR204	no	2	1	Gold	Right Angle	No	Blue	Off	Off	1-3, 4-6
2-1825097-4	TPB21MGR204	no	2	1	Gold	Right Angle	yes	Black	Off	Off	1-3, 4-6
2-1825097-5	TPB21MGR204	no	2	1	Gold	Right Angle	yes	Red	Off	Off	1-3, 4-6
2-1825097-6	TPB21MGR204	no	2	1	Gold	Right Angle	yes	Blue	Off	Off	1-3, 4-6
2-1825097-7	TPB21MGR0004	no	2	2	Gold	Right Angle	No	Black	On	Off	1-2, 4-5, 2-3, 5-6
2-1825097-8	TPB21MGR204	no	2	2	Gold	Right Angle	No	Red	On	Off	1-2, 4-5, 2-3, 5-6
2-1825097-9	TPB21MGR204	no	2	2	Gold	Right Angle	No	Blue	On	Off	1-2, 4-5, 2-3, 5-6
2-1825097-0	TPB21MGR204	no	2	2	Gold	Right Angle	yes	Black	On	Off	1-2, 4-5, 2-3, 5-6
2-1825097-1	TPB21MGR204	no	2	2	Gold	Right Angle	yes	Red	On	Off	1-2, 4-5, 2-3, 5-6
2-1825097-2	TPB21MGR204	no	2	2	Gold	Right Angle	yes	Blue	On	Off	1-2, 4-5, 2-3, 5-6
2-1825097-3	TPB21MGR204	no	2	2	Gold	Right Angle	yes	Black	On	Off	1-2, 4-5, 2-3, 5-6
2-1825097-4	TPB21MGR204	no	2	2	Gold	Right Angle	yes	Red	On	Off	1-2, 4-5, 2-3, 5-6
2-1825097-5	TPB21MGR204	no	2	2	Gold	Right Angle	yes	Blue	On	Off	1-2, 4-5, 2-3, 5-6
2-1825097-6	TPB21MGR204	no	2	2	Gold	Right Angle	yes	Black	On	Off	1-2, 4-5, 2-3, 5-6
2-1825097-7	TPB21MGR204	no	2	2	Gold	Right Angle	yes	Red	On	Off	1-2, 4-5, 2-3, 5-6
2-1825097-8	TPB21MGR204	no	2	2	Gold	Right Angle	yes	Blue	On	Off	1-2, 4-5, 2-3, 5-6
2-1825097-9	TPB21MGR204	no	2	2	Gold	Right Angle	yes	Black	On	Off	1-2, 4-5, 2-3, 5-6

- NOTES:
 1. TERMINAL NUMBERS ARE FOR REFERENCE ONLY AND DO NOT APPEAR ON SWITCHES
 2. ALL MATERIALS AND FINISHES COMPLY WITH EU DIRECTIVE 2002/95/EC OF 27JAN2003 (ROHS).
 3. DISPOSABLE BODY SUPPLIED WITH ES VERSIONS. BODY TO BE PLACED OVER BUSHING BEFORE SOLDER WASHING
 4. CENTER TERMINAL PRESENT ON DOUBLE THROW SWITCHES ONLY.
 5. CENTER HOLE REQUIRED ON DOUBLE THROW SWITCHES ONLY.

THIS DRAWING IS A CONTROLLED DOCUMENT.

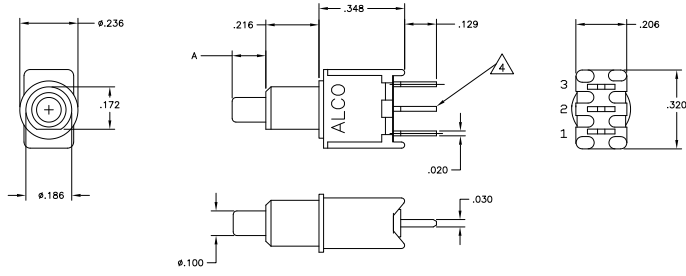
TE Connectivity
 PUSHBUTTON SWITCH, TPB SERIES

DATE: 00779
 G=1825097

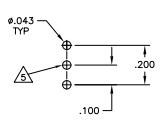
CUSTOMER DRAWING

THIS DRAWING IS UNPUBLISHED
 ALL RIGHTS RESERVED

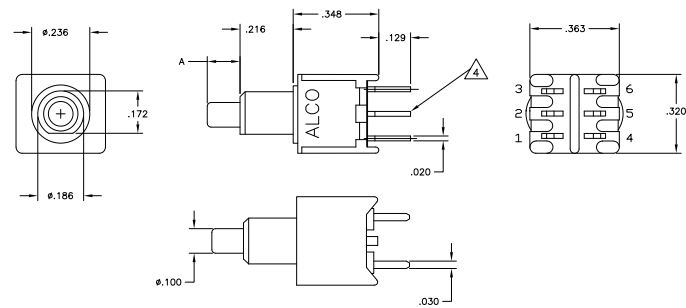
REV	DATE	DESCRIPTION	BY	APP
AD		SEE SHEET 1		



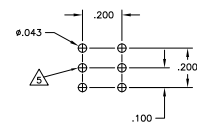
TPB11CGPC & TPB11F6PC



PCB HOLE LAYOUT



TPB21MGPC & TPB21RGPC



PCB HOLE LAYOUT

THIS DRAWING IS A CONTROLLED DOCUMENT.		BY	DATE	REV	DATE	DESCRIPTION	BY	DATE
DESIGNED	BY	DATE	REV	DATE	DESCRIPTION	BY	DATE	DESCRIPTION
CHECKED	BY	DATE	REV	DATE	DESCRIPTION	BY	DATE	DESCRIPTION
APPROVED	BY	DATE	REV	DATE	DESCRIPTION	BY	DATE	DESCRIPTION

TE Connectivity

PUSHBUTTON SWITCH, TPB SERIES

DATE: 00779 (G=1825097)

CUSTOMER DRAWING

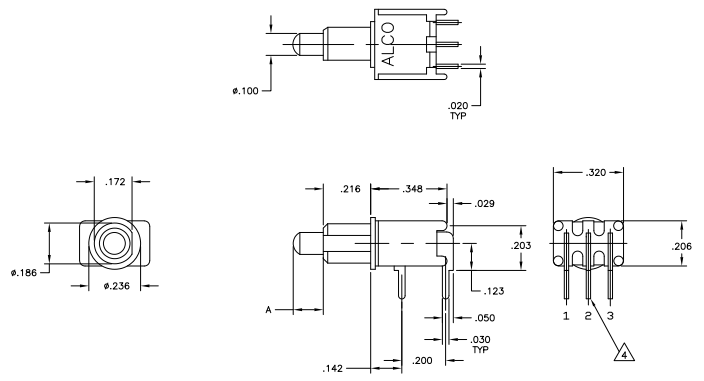
SIZE: 4.1

SHEET: 2 OF 6

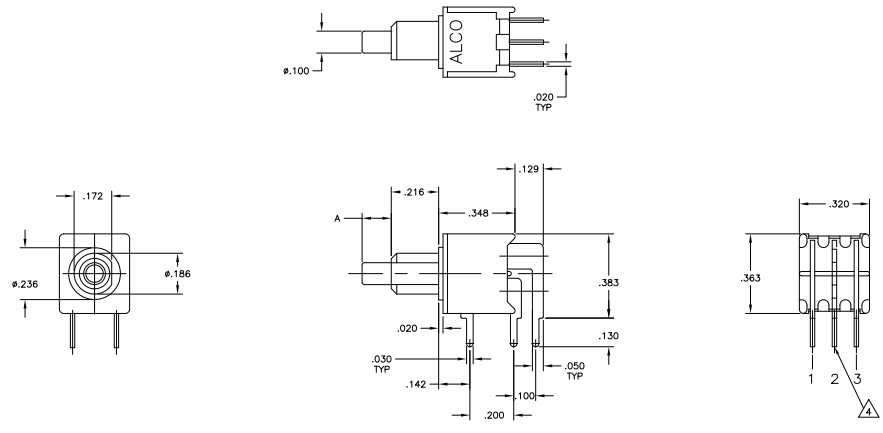
REV: A1

THIS DRAWING IS UNPUBLISHED
 ALL RIGHTS RESERVED

REV	DATE	DESCRIPTION	BY	APP
AD	-	SEE SHEET 1	-	-



TPB11CGRA & TPB11FGRA
 TPBF11CGRA & TPBF11FGRA

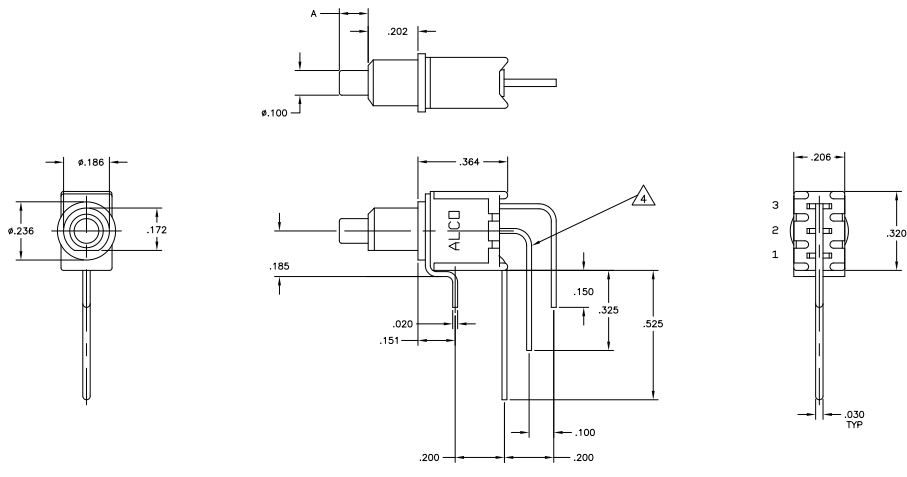


TPB21MGRA & TPB21RGRA

THIS DRAWING IS A CONTROLLED DOCUMENT.		BY: BENNER	DATE: 03/03/09	TE Connectivity	
DESIGNED BY: J. MITO	DESIGNED DATE: 03/03/09	BY: J. MITO	DATE: 03/03/09	PUSHBUTTON SWITCH, TPB SERIES	
APPROVED BY: J. MITO	APPROVED DATE: 03/03/09	BY: J. MITO	DATE: 03/03/09	PUSHBUTTON SWITCH, TPB SERIES	
DATE: 03/03/09	DRAWING NO: 100779	REV: 0	ISSUE DATE: 03/03/09	REVISED TO: -	REVISED BY: -
CUSTOMER DRAWING		SIZE: 4.1	SHEET: 3	TOTAL SHEETS: 6	APP: A1

THIS DRAWING IS UNPUBLISHED
 ALL RIGHTS RESERVED

REV. NO.		REVISIONS		DATE	BY	APP'D
AD	1	REVISED	DESCRIPTION	-	-	-
-	-	-	SEE SHEET 1	-	-	-



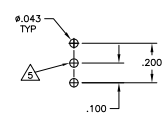
TPB11CVRA & TPB11FGVRA

PCB HOLE LAYOUT

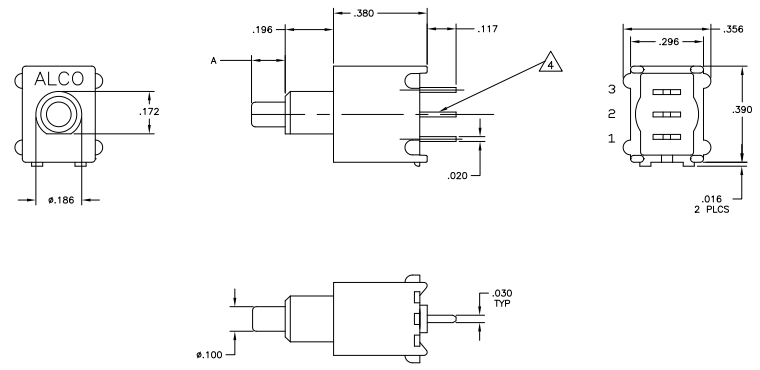
THIS DRAWING IS A CONTROLLED DOCUMENT.		BY: BENNER	DATE: 06/20/07	TE Connectivity	
DESIGNED BY: MOSES	APPROVED BY: [Signature]	DATE: 06/20/07	DATE: 06/20/07		
1. REV. NO. 1 2. REV. NO. 2 3. REV. NO. 3 4. REV. NO. 4 5. REV. NO. 5	1. REV. NO. 1 2. REV. NO. 2 3. REV. NO. 3 4. REV. NO. 4 5. REV. NO. 5	1. REV. NO. 1 2. REV. NO. 2 3. REV. NO. 3 4. REV. NO. 4 5. REV. NO. 5	1. REV. NO. 1 2. REV. NO. 2 3. REV. NO. 3 4. REV. NO. 4 5. REV. NO. 5	PUSHBUTTON SWITCH, TPB SERIES SIZE: 100779 DRAWING NO: 1825097 CUSTOMER DRAWING	SHEET: 4 OF: 6 REV: A1

THIS DRAWING IS UNPUBLISHED
 ALL RIGHTS RESERVED

REV	DATE	DESCRIPTION	BY	APP
AD	-	SEE SHEET 1	-	-



PCB HOLE LAYOUT

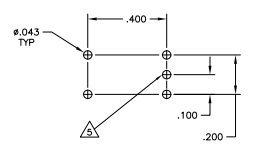
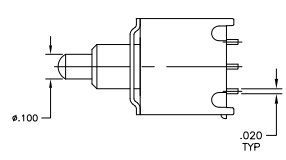


TPB11CGPCES & TPB11FGPCES
 TPBF11CGPCES & TPBF11FGPCES

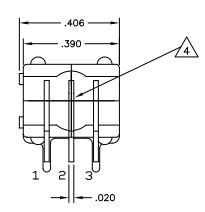
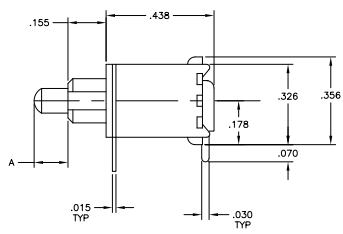
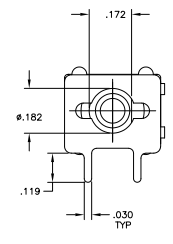
THIS DRAWING IS A CONTROLLED DOCUMENT.		BY: BENNER	DATE: 03/01/01	TE Connectivity	
DRAWN BY: M. MITO		DATE: 03/01/01	PUSHBUTTON SWITCH, TPB SERIES		
CHECKED BY: M. MITO		DATE: 03/01/01	DRAWING NO: 100779		
APPROVED BY: M. MITO		DATE: 03/01/01	REV: 1		
PART: TPB11CGPCES		REV: 1	DATE: 03/01/01	ISSUE: 4.1	REV: 6
CUSTOMER DRAWING		DRAWING NO: 100779			

THIS DRAWING IS UNPUBLISHED
 ALL RIGHTS RESERVED

REV	DATE	DESCRIPTION	BY	APP
AD	-	SEE SHEET 1	-	-



PCB HOLE LAYOUT



TPB11CGRAES & TPB11FGRAES
 TPBF11CGRAES & TPBF11FGRAES

THIS DRAWING IS A CONTROLLED DOCUMENT.		BY: BENNER	DATE: 06/06/07	TE Connectivity	
DRAWN BY: M. MITO		DATE: 06/06/07	PUSHBUTTON SWITCH, TPB SERIES		
CHECKED BY: M. MITO		DATE: 06/06/07	DRAWING NO: 100779		
APPROVED BY: M. MITO		DATE: 06/06/07	DRAWING NO: 1825097		
CUSTOMER DRAWING		DATE: 4-1	REV: 6	BY: AT	