

4

3

2

1

THIS DRAWING IS UNPUBLISHED. RELEASED FOR PUBLICATION  
 © COPYRIGHT - By - ALL RIGHTS RESERVED.

LOC		DIBT		REVISIONS			
P	LR	DESCRIPTION	DATE	BY	APPD		
A1		REVISED PER ECO-11-004820	11MAR11	RK	HMR		

SPECIFICATIONS:

MATERIALS:

CASE: THERMOSET.  
 ACTUATOR BUTTON: THERMOPLASTIC MSPF-101B: COLOR: BLACK MSPF-101C: COLOR: RED.  
 MOVING CONTACT: COPPER ALLOY, SILVER PLATE.  
 FIXED CONTACT: COPPER ALLOY, SILVER PLATE.  
 TERMINALS: COPPER ALLOY, SILVER PLATE.  
 TERMINAL SEAL: EPOXY.

ELECTRICAL:

CONTACT RATING: 0.5 AMPS AT 125 VAC.  
 INITIAL CONTACT RESISTANCE: 100 MILLIOHMS.  
 INSULATION RESISTANCE: 1,000 MEGOHMS MIN.  
 DIELECTRIC STRENGTH: 1000V RMS AT SEA LEVEL.  
 LIFE EXPECTANCY: 10,000 CYCLES.

MECHANICAL:

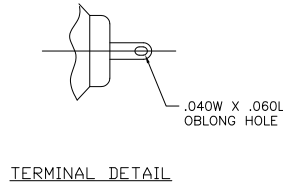
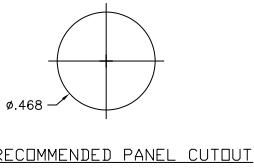
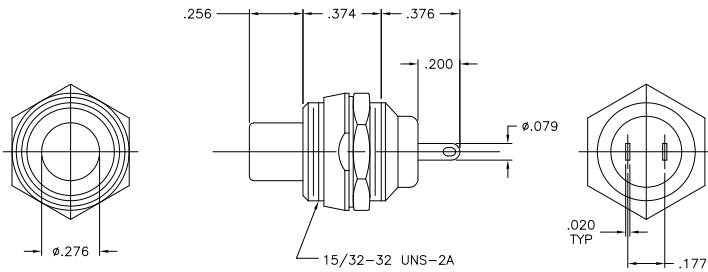
ACTUATION TRAVEL: .098.

ENVIRONMENTAL:

OPERATING TEMPERATURE: -4°F TO +176°F(-20°C TO +80°C).  
 STORAGE TEMPERATURE: -4°F TO +176°F(-20°C TO +80°C).

NOTES:

- INTERPRET DRAWING PER ASME Y14.5M-1994.
- SUPPLIED WITH MOUNTING HARDWARE:  
 (1) WASHER  
 (1) N-35 DECORATIVE NUT  
 (1) HEX NUT.
- RECOMMENDED HAND SOLDER TEMP. OF 420C FOR 5 SECONDS.



CIRCUIT DIAGRAM

NORMALLY OPEN	SPST	MSPF-101C	9-1437567-3
NORMALLY CLOSED	SPST	MSPF-101B	8-1437567-8
ACTION	TYPE	MODEL NO.	PART NUMBER

THIS DRAWING IS A CONTROLLED DOCUMENT.		DATE		TE Connectivity	
DRAWN: S. SCHLEGEL 11JAN2008		CHECKED: M. WILBOURN 1/16/08		TE Connectivity	
APPROVED: M. WILBOURN 1/16/08		NAME: M. WILBOURN		PUSH BUTTON MOMENTARY (MSPF-101B AND C SERIES)	
DIMENSIONS: INCHES		APPLICATION SPEC: -		RESTRICTED TO: -	
MATERIAL: -		WEIGHT: -		SCALE: NTS	
FINISH: -		CUSTOMER DRAWING		SHEET 1 of 1 REV A1	