

4

3

2

1

THIS DRAWING IS UNPUBLISHED. RELEASED FOR PUBLICATION  
 © COPYRIGHT BY TYCO ELECTRONICS CORPORATION. ALL RIGHTS RESERVED.

LOC		DIBT		REVISIONS		
P	LR	DESCRIPTION	DATE	BY	APP'D	
A		REVISED PER ECO-07-029644	1/11/08	SS	MW	

## SPECIFICATIONS:

## MATERIALS:

CASE: THERMOSET.  
 ACTUATOR BUTTON: THERMOPLASTIC. COLOR: SEE CHART.  
 MOVING CONTACT: COPPER ALLOY, SILVER PLATE.  
 FIXED CONTACT: COPPER ALLOY, SILVER PLATE.  
 TERMINALS: COPPER ALLOY, SILVER PLATE.  
 TERMINAL SEAL: EPOXY.

## ELECTRICAL:

CONTACT RATING: 0.5 AMPS AT 125 VAC.  
 INITIAL CONTACT RESISTANCE: 100 MILLIOHMS.  
 INSULATION RESISTANCE: 1,000 MEGOHMS MIN.  
 DIELECTRIC STRENGTH: 1000V RMS AT SEA LEVEL.  
 LIFE EXPECTANCY: 10,000 CYCLES.

## MECHANICAL:

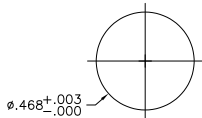
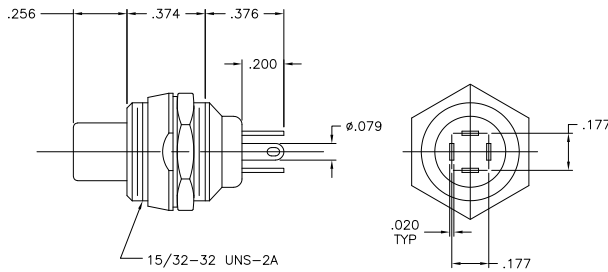
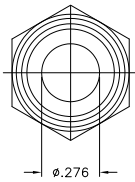
ACTUATION TRAVEL: .098.

## ENVIRONMENTAL:

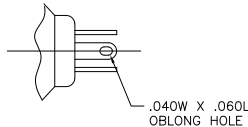
OPERATING TEMPERATURE: -4°F TO +176°F(-20°C TO +80°C).  
 STORAGE TEMPERATURE: -4°F TO +176°F(-20°C TO +80°C).

## NOTES:

- INTERPRET DRAWING PER ASME Y14.5M-1994.
- SUPPLIED WITH MOUNTING HARDWARE:  
 (1) WASHER  
 (1) N-35 DECORATIVE NUT  
 (1) HEX NUT.
- RECOMMENDED HAND SOLDER TEMP. OF 420C FOR 5 SECONDS.



RECOMMENDED PANEL CUTOUT



TERMINAL DETAIL



NORMALLY OPEN / NORMALLY CLOSED

CIRCUIT DIAGRAM

NORMALLY OPEN / NORMALLY CLOSED	2 CKT	WHITE	MSPF-101BC-9	9-1437567-2
NORMALLY OPEN / NORMALLY CLOSED	2 CKT	BLUE	MSPF-101BC-6	9-1437567-1
NORMALLY OPEN / NORMALLY CLOSED	2 CKT	RED	MSPF-101BC-2	9-1437567-0
NORMALLY OPEN / NORMALLY CLOSED	2 CKT	BLACK	MSPF-101BC-0	8-1437567-9

ACTION		TYPE	ACTUATOR COLOR	MODEL NO.	PART NUMBER
THIS DRAWING IS A CONTROLLED DOCUMENT.					
DIMENSIONS:		DESIGN: S. SCHLEGEL 11JAN2008 CHECKED: M. WILBOURN 1/16/08 APPROVED: M. WILBOURN 1/16/08 NAME: M. WILBOURN PRODUCT SPEC: - APPLICATION SPEC: - WEIGHT: - MATERIAL: - FINISH: -			
INCHES: 0 PLC ± . 1 PLC ± . 2 PLC ± . 3 PLC ± .010 4 PLC ± . ANGLES ± ° '		Tyco Electronics Corporation Harrisburg, PA 17105-3608 PUSH BUTTON MOMENTARY (MSPF-101BC SERIES) SIZE: A2 CASE CODE: 00779 DRAWING NO: C-9-1437567-1 RESTRICTED TO: - CUSTOMER DRAWING SCALE: NTS SHEET: 1 of 1 REV: A			