

59075 Heavy Duty Stainless Steel Threaded Barrel Features and Benefits



Features

- 2 part magnetically operated proximity sensor
- Heavy duty stainless steel threaded barrel with retaining nuts
- M12 by 1.00mm thread
- Choice of normally open, high voltage or change over contacts
- Customer defined sensitivity
- Choice of cable length and connector

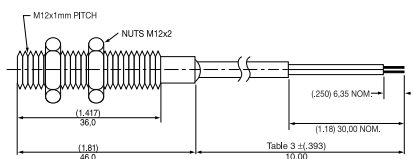
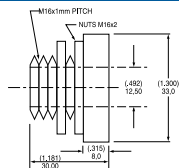
Benefits

- Robust construction makes this sensor well suited to harsh industrial environments
- Simple installation and adjustment using supplied retaining nuts
- No standby power requirement
- Operates through non-ferrous materials such as wood, plastic or aluminium

Applications

- Off road and heavy vehicles
- Farm machinery

DIMENSIONS (in) mm



SCHEMATICS	Switch Type
	Blue Brown 1 & 2
	Black Blue Red 3
	Blue Brown 4

CUSTOMER OPTIONS - Switching Specifications

TABLE 1			Normally Open	Normally Open High Voltage	Change Over	Normally Closed
Contact Type						
Switch Type			1	2	3	4
Voltage	Power	Watt - max.	10	10	5	5
	Switching	Vdc - max.	200	300	175	175
Current	Breakdown	Vdc - min.	250	450	200	200
	Switching	A - max.	0.5	0.5	0.25	0.25
Resistance	Carry	A - max.	1.2	1.5	1.5	1.5
	Contact, Initial	Ω - max.	0.2	0.2	0.2	0.2
Capacitance	Insulation	Ω - min.	10 ¹⁰	10 ¹⁰	10 ⁹	10 ⁹
	Contact	pF - typ.	0.3	0.2	0.3	0.3
Temperature	Operating	°C	-40 to +85	-20 to +85	-40 to +85	-40 to +85
	Storage	°C	-65 to +85	-65 to +85	-65 to +85	-65 to +85
Time	Operate	ms - max.	1.0	1.0	3.0	3.0
	Release	ms - max.	1.0	1.0	3.0	3.0
Shock	11ms 1/2 sine	G - max.	100	100	50	50
Vibration	50-2000 Hz	G - max.	30	30	30	30

CUSTOMER OPTIONS - Sensitivity, Cable Length and Termination Specification

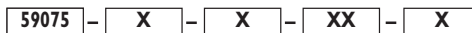
TABLE 2								
Sensitivity Options:-								
Activate Distances are approximate using Hamlin 57075 actuator as illustrated								
Switch AT before modification								
	S		T		U		V	
Select Option	Pull In AT Range	Activate Distance d (in) mm	Pull In AT Range	Activate Distance d (in) mm	Pull In AT Range	Activate Distance d (in) mm	Pull In AT Range	Activate Distance d (in) mm
1 Normally Open	12-18	(.984)	17-23	(.827)	22-28	(.748)	27-33	(.689)
2 High Voltage		25.0	21.0	19.0	19.0	17.5		
3 Change Over	15-20	(.906)	20-25	(.787)	25-30	(.709)		
4 Normally Closed		23.0	20.0	18.0				

TABLE 3	
Cable Type:- BS 6500 3A 16/0.2 PVC DOUBLE INSULATED	
Standard Lengths	
SELECT OPTION	CABLE LENGTH (in) mm
01	(3.94) 100
02	(11.81) 300
03	(19.69) 500
04	(29.53) 750
05	(39.37) 1000

TABLE 4		
Termination Options:-		
SELECT OPTION	DESCRIPTION (2 WIRE VERSIONS ILLUSTRATED)	
A or F	Tinned or untinned leads	
C	6.35mm fastons	

ORDERING INFORMATION

N.B. 57075 actuator sold separately



- Series 59075
- Switch Type — Table 1
- Sensitivity — Table 2
- Cable Length — Table 3
- Termination — Table 4

Hamlin USA Tel: +1 920 648 3000 • Fax: +1 920 648 3001 • Email: sales.us@hamlin.com
 Hamlin UK Tel: +44 (0)1379 649700 • Fax: +44 (0)1379 649702 • Email: sales.uk@hamlin.com
 Hamlin Germany Tel: +49 (0) 6142 923920 • Fax: +49 (0) 6142923921 • Email: sales.de@hamlin.com
 Hametrol France Tel: +33 (0) 1 6047 3000 • Fax: +33 (0) 1 6015 9136 • Email: sales.fr@hamlin.com

ISSUE No:5 DATE: 16/10/08

DETAILS PROVIDED ON THIS DATA SHEET ARE PROVIDED FOR INFORMATION PURPOSES ONLY AND SHOULD NOT BE RELIED UPON AS BEING ACCURATE FOR ANY PARTICULAR PURPOSE. Product performance may be affected by the application to which the product is put. Upon request, HAMLIN will assist purchasers by providing information specific to any particular application. HAMLIN disclaims any and all liability whatsoever for any purchaser's reliance upon the information contained on this data sheet without further consultation with authorised representatives of HAMLIN.