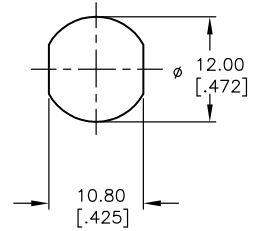


CIRCUIT: SPST  
CONTACT CONFIGURATION

SWITCH FUNCTION	
POS 1	POS 2
↑	→
OFF	(ON)

LEGEND  
 ○ = OFF POSITION  
 ■ = INDICATES KEY PULL  
 X = INDICATES NO KEY PULL



RECOMMENDED PANEL CUTOUT

NOTES:

- ALL DIMENSIONS IN MM
- GENERAL TOLERANCE: X.X=±0.4  
X.XX=±0.25
- TERM. NOS. FOR REFERENCE ONLY.
- RATING: 1A @125VAC, 0.5A @250VAC
- CONTACT RESISTANCE: 10mILLI-OHMS
- DIELECTRIC STRENGTH: 1000 VAC-1Minute
- MATERIALS:  
 HOUSING: ZINC ALLOY DIE CAST  
 CYLINDER: ZINC ALLOY W/CHROME PLATING  
 TERMINAL AND CONTACTS: SILVER PLATED  
 KEYS (2) KEY CODE 755: ZINC ALLOY, CHROME PLATING

REV.	ECN No.	DESCRIPTION	DATE	CHKD
D	13563	OVERALL LENGTH & DESCRIPTION	10/30/03	AR
C	13056	DESC WAS K0133C-755	4/17/03	AR
B	12767	DESC WAS K0133E-755	1/27/03	CJB
A	11735	RELEASED FOR PRODUCTION	10/12/01	CJB

THE INFORMATION CONTAINED IN THIS DOCUMENT IS PROPRIETARY TO E-SWITCH AND IS NOT TO BE COPIED OR TRANSFERRED

**E-SWITCH®**

TITLE: **K0133C-755**

SCALE: 1.5:1	DATE: 10/12/01	DR: CJB	DWG: K400111	REV: D
--------------	----------------	---------	--------------	--------