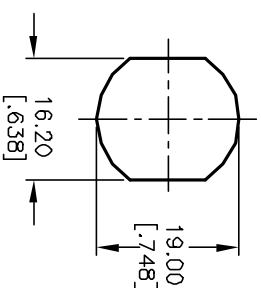


NOTES:

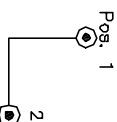
1. ALL DIMENSIONS IN MM [INCH]
 2. GENERAL TOLERANCE: X.X=±0.4
X.XX=±0.25
 3. TERM. NOS. FOR REF. ONLY
 4. CONTACT RATING: 4A @125VAC/28VDC, 2A @250VAC
 5. DIELECTRIC STRENGTH: 1KV RMS min. at sea level
 6. ELECTRICAL LIFE: 10,000 make-and-break cycles at full load.
 7. MATERIALS:
CONTACTS: Silver Plated CU (Q Contact material)
TERMINALS: GOLD Plated Cu (Q Contact material)
MOUNTING NUT: Nickel Plated zinc alloy
CONTACT SPRING: Piano Wire
- (B) KEYS (2): Brass with code no. A126
LOCK: Bright Ni plated zinc alloy with Ni facing
TUMBLER Mechanism: 4-disc tumbler cylinder.



RECOMMENDED PANEL LAYOUT

- (B) LEGEND
- =Detent Positions (45° or 90°)
 - ⊙ =Key pull possible in these positions

| CIRCUIT: SP (90° INDEXING) | |
|----------------------------|----------------------|
| CONTACT CONFIGURATION | |
| SWITCH FUNCTION | CONNECTED TERMINAL # |
| PQS. 1 | PQS. 2 |
| 8-1 | 1-3 |



| REV. | ECN NO. | DESCRIPTION | DATE | CHK'D |
|------|---------|-------------|----------|-------|
| B | 11722 | REVISED | 10/11/01 | CJB |

| TITLE | | SCALE | DATE | DR | DWG | REV |
|-------------|--|-------|----------|-----|---------|-----|
| K0130R-A126 | | 1:1 | 10/11/01 | CJB | K200227 | B |

E-SWITCH®

THE INFORMATION CONTAINED IN THIS DOCUMENT IS PREPARED FOR E-SWITCH AND IS NOT TO BE COPIED OR TRANSMITTED