



BP04KE



BP01KE



BP08KT

**Easy Build-A-Switch**

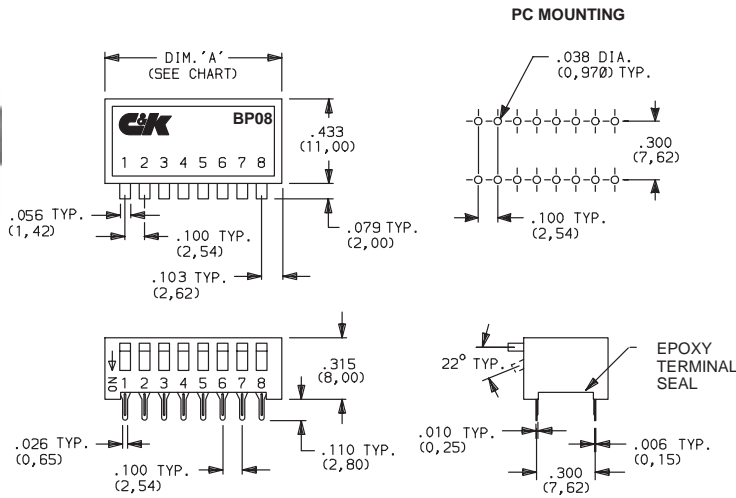
Below is a complete listing of available options for BP SERIES SIDE ACTUATED DIP SWITCHES. Build-A-Switch allows you to mix and match options to create the switch you need—simply select desired option from each category. All available options are shown on pages D-6. Dashes, hyphens or spaces in the part number are not significant and are shown for clarity only. Complete HOW TO ORDER information is at the end of this section, page D-7.

D

MODEL	SWITCH FUNCTION	CONTACT MATERIAL	SEAL
BP01	(NONE)	K	E
BP02	R	Y	T
BP03			
BP04			
BP05			
BP06			
BP07			
BP08			
BP10			
BP12			



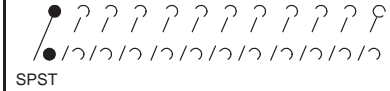
MODEL



Part No. Shown: BP08KE

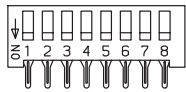
MODEL NO.	NO. POS.	DIM. 'A'
BP01	1	.206 (5,23)
BP02	2	.306 (7,77)
BP03	3	.406 (10,31)
BP04	4	.506 (12,85)
BP05	5	.606 (15,39)
BP06	6	.706 (17,93)
BP07	7	.806 (20,47)
BP08	8	.906 (23,00)
BP10	10	1.106 (28,09)
BP12	12	1.306 (33,17)

Schematic:



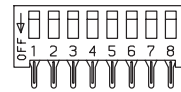
SWITCH FUNCTION

**(NONE)** (STD.) THROW



Actuator is DOWN in ON position, as shown.

**R** REVERSE THROW



Actuator is UP in ON position, as shown.

NOTE: All switches shipped in 'OFF' position standard.

CONTACT MATERIAL

OPTION CODE	CONTACT MATERIAL	TERMINAL PLATING	RATINGS	
			LOW LEVEL / DRY CIRCUIT	CARRY: 100 mA max. @ 50 V DC; SWITCH: 100 mA max. @ 5 V DC or 25 mA max. @ 25 V DC.
K	GOLD <sup>1</sup>	TIN <sup>2</sup>		
Y	TIN <sup>2</sup>	TIN <sup>2</sup>		

<sup>1</sup> CONTACTS: Gold over nickel over phosphor bronze.

<sup>2</sup> CONTACTS & ALL TERMINALS: Phosphor bronze, tin plated.

SEAL

**E** (STD.) EPOXY TERMINAL SEAL, NO TAPE SEAL



**T** EPOXY TERMINAL SEAL, REMOVABLE TAPE ACTUATOR SEAL. SPLASH RESISTANT.





## HOW TO ORDER

All available BP SERIES SIDE ACTUATED DIP SWITCH options are listed on page D-5, and are described on pages D-6. When selecting options and building a part number, some ordering format boxes may not be filled. Dashes, hyphens or spaces in the part number are not significant and are shown for clarity only.

## SPECIFICATIONS

SWITCH FUNCTION: SPST - 1, 2, 3, 4, 5, 6, 7, 8, 10 & 12 positions available.

### CONTACT RATING:

Carry: 100 mA max. @ 5 V DC.

Switch: 100 mA max. @ 5 V DC or 25 mA max. @ 25 V DC.

MECHANICAL & ELECTRICAL LIFE: 2,000 make-and-break cycles each circuit, models with gold contacts (K contact material). 1,000 cycles, models with tin contacts (Y contact material).

CONTACT RESISTANCE: Below 50 milliohms typ. initial @ 2-4 V DC, 100 mA.

INSULATION RESISTANCE:  $10^9$  ohms min.

DIELECTRIC STRENGTH: 500 V RMS min. @ sea level between adjacent terminals.

STORAGE & OPERATING TEMPERATURE: -20°C to 60°C.

SOLDERABILITY: Per MIL-STD-202F method 208D, or EIA RS-186E method 9 (1 hour steam aging).

PACKAGING: Switches supplied in rigid dispensing tubes in full-tube quantities only; this may affect order quantity. Number of switches per tube varies with model, consult factory. Switch position 1 denotes pin no. 1. All switch actuators in 'OFF' position standard.

## MATERIALS

CASE: Glass filled polyester (PET), flame retardant (UL 94V-0).

COVER: Anodized aluminum.

ACTUATOR: Glass filled polyester (PET), flame retardant, (UL 94V-0).

CONTACTS: Gold over nickel over phosphor bronze (K contact material) or phosphor bronze, tin plated (Y contact material).

TERMINALS: Phosphor bronze, tin plated.

TERMINAL SEAL: Epoxy.

TAPE SEAL: Metalized polyester.

**NOTE:** Specifications and materials listed above are general specifications for switches with standard options. For information on specific and custom switches, consult factory.