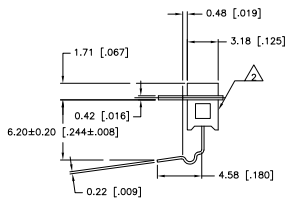
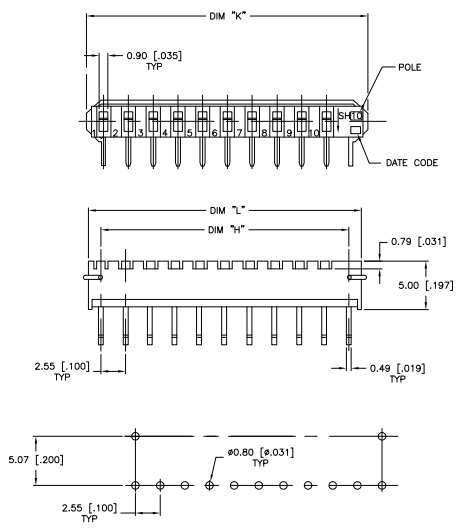


REV	DATE	DESCRIPTION	BY	APP
A1	02-26-214542			



SPECIFICATIONS:

MATERIALS:
 BASE: PPS UL94V-0, BLACK
 COVER: PPS UL94V-0, BLACK
 ACTUATOR: 4/6 NYLON UL94V-0, WHITE
 MOVING CONTACT: COPPER ALLOY, GOLD OVER NICKEL
 FIXED CONTACT/TERMINAL: COPPER ALLOY, GOLD OVER NICKEL

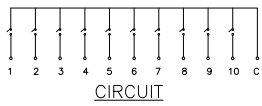
ELECTRICAL:
 CONTACT RATING: 4V@20V DC MAX
 CONTACT RESISTANCE: 50 MILLIOHMS MAX
 INSULATION RESISTANCE: 100 MEGOHMS MIN AT 100V DC
 DIELECTRIC STRENGTH: 500V AC RMS @ SEA LEVEL
 LIFE EXPECTANCY: 1,000 CYCLES

MECHANICAL:
 ACTUATION FORCE: 800 GRAMS MAX
 TRAVEL: .050

ENVIRONMENTAL:
 OPERATING TEMPERATURE: -30° TO +85°C
 STORAGE TEMPERATURE: -45° TO +100°C
 RESISTANCE TO SOLDER HEAT: 265±3°C FOR 8±2 SECONDS
 SOLDERABILITY PER JIS C 0050 & JIS C 0053

RECOMMENDED PCB HOLE LAYOUT

- NOTES:**
- ALL MATERIALS AND FINISHES SHALL COMPLY WITH EU DIRECTIVE 2002/95/EC OF 27JAN2003 (ROHS)
- ⚠ MARK "ALCO" ON THIS SURFACE.



28.9 [1.138]	25.40 [1.000]	27.89 [1.098]	SSH10	1825153-5
23.83 [9.38]	20.32 [800]	22.81 [898]	SSH08	1825153-4
18.75 [7.38]	15.24 [600]	17.73 [698]	SSH06	1825153-3
13.67 [5.38]	10.16 [400]	12.65 [498]	SSH04	1825153-2
8.59 [3.38]	5.08 [200]	7.57 [298]	SSH02	1825153-1
DIM "K"	DIM "H"	DIM "L"	T&B P/N	TYCO P/N

THIS DRAWING IS A CONTROLLED DOCUMENT		REVISED BY	DATE	REVISION
DESIGNED BY	APPROVED BY	S. SARDER		
DRAWN BY	CHECKED BY			
DATE	DATE			
ISSUE NO.	ISSUE NO.			
REVISED BY	DATE			
DATE	DATE			
ISSUE NO.	ISSUE NO.			
REVISED BY	DATE			
DATE	DATE			
ISSUE NO.	ISSUE NO.			