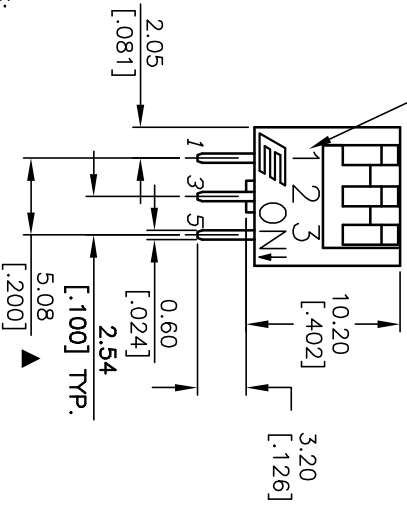
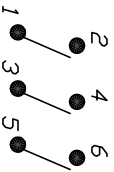
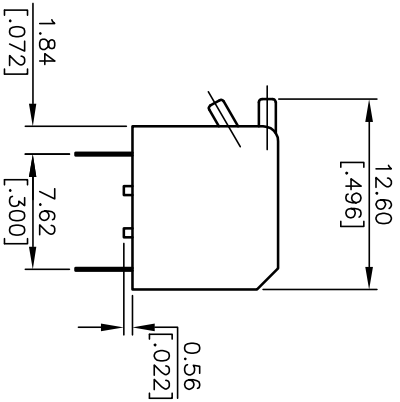


POS. 1 DESIGNATE
PIN #1 LOCATION



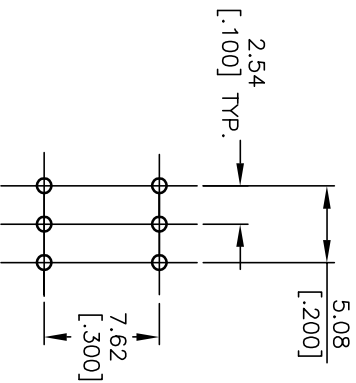
NOTES:

1. ALL DIMENSIONS IN MM
2. GENERAL TOLERANCE: X.X=±0.4
X.XX=±0.25
3. TERM. NOS. FOR REFERENCE ONLY.
4. CONTACT RATINGS: 25mA @24VDC.
5. MATERIAL: (TERMINALS/CONTACTS):
PHOSPHOR BRONZE w/Gold Plate over
Nickel Plate
6. INSULATION RESISTANCE:
100Mega-ohms min @500VDC
7. CONTACT RESISTANCE (INITIAL):
50mILLI-ohms @2-4VDC @100mA
8. OPERATING FORCE: 1000gf max.
9. TRAVEL: 2mm typical
- ▲10. SWITCHES SUPPLIED WITH TAPE SEAL.
- ▲11. SWITCHES SUPPLIED IN DISPENSING TUBES
WITH ALL POLES IN THE "OFF" POSITION.
12. ▲ DENOTES CRITICAL PARAMETER.



CONTACT CONFIGURATION

*(Pos. 1 Denotes Pin No. 1)



RECOMMEND P.C.B. LAYOUT -FOR 3 POS.

| | | | | |
|------|---------|-------------------------|---------|------|
| REV. | ECN No. | DESCRIPTION | DATE | CHKD |
| A | 13336 | RELEASED FOR PRODUCTION | 7/31/03 | |

| | | | | |
|-----------|---------|----|---------|-----|
| TITLE | | | | |
| KAP1103ET | | | | |
| SCALE | DATE | DR | DWG | REV |
| 2:1 | 7/31/03 | AR | N411033 | A |

E-SWITCH®

THE INFORMATION CONTAINED IN THIS DOCUMENT IS PROPRIETARY TO E-SWITCH AND IS NOT TO BE COPIED OR TRANSFERRED