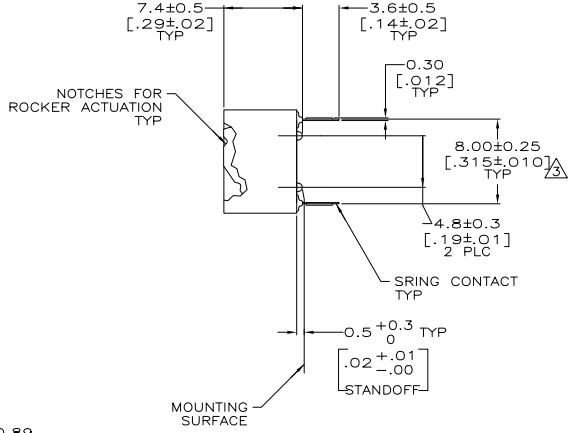
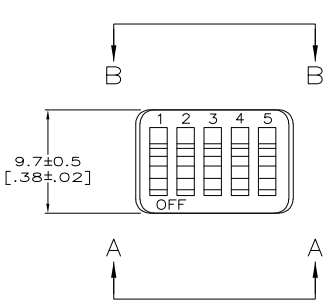
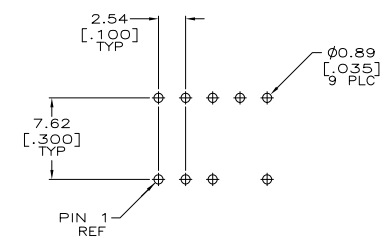


THIS DRAWING IS UNPUBLISHED. RELEASED FOR PUBLICATION
 © copyright BY TYCO ELECTRONICS CORPORATION. ALL RIGHTS RESERVED.

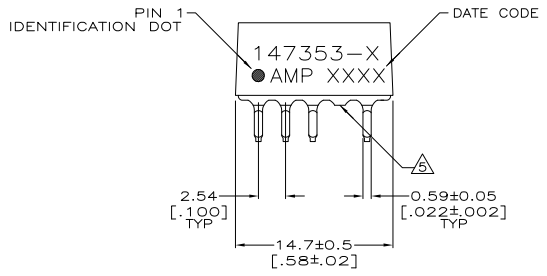
REVISONS		DATE	OWN	APPD
AD	0			
TR	TR			
A	ECO-05-003714	02AUG05	MB	MS



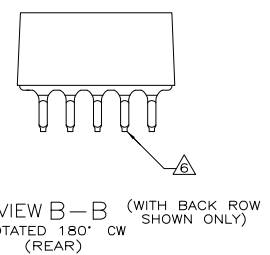
- △ HOUSING AND ROCKERS: POLYESTER. CONTACTS: COPPER ALLOY.
- △ SPRING CONTACTS: 0.76µm [0.000030] MIN GOLD IN CONTACT AREA OVER 1.27µm [0.000050] MIN NICKEL.
- △ 8.00±0.25 [0.315±0.010] DIMENSION APPLIES AT SPRING CONTACT TIPS. SPRING CONTACTS ARE 7.62+0.25/0 [0.300+0.010/-0.000] AT MOUNTING SURFACE.
- 4. ALL CHARACTERS AND ROCKERS ARE WHITE, HOUSING IS BLUE.
- △ CONTACT CLIPPED TO BOTTOM OF CORE IN POSITION 4 ONLY. (FRONT)
- △ CONTACT DEPICTED IS ON BACK ROW ONLY. (REAR)
- △ ALL MATERIALS AND FINISHES SHALL COMPLY WITH EU DIRECTIVE 2002/95/EC OF 27JAN2003 (ROHS)



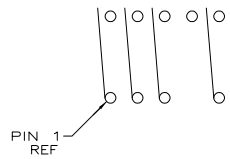
RECOMMENDED PCB LAYOUT



VIEW A-A (WITH FRONT ROW SHOWN ONLY)
(FRONT)



VIEW B-B (WITH BACK ROW SHOWN ONLY)
ROTATED 180° CW (REAR)



CONTACT ARRANGEMENT

TIN	5	147353-2
TIN/LEAD	5	147353-1
SOLDER LEAD PLATING	NO. OF POSN	SWITCH ASSY P/N

THIS DRAWING IS A CONTROLLED DOCUMENT.		DATE	BY	APPROVED	REVISIONS
DIMENSIONS: mm [INCHES]		17 NOV 99	D. HARDY		
MATERIAL		28 JAN 00	D. WYNKOOP		
FINISH		28 JAN 00	D. WYNKOOP		
APPLIC. SPEC					
WEIGHT					
CUSTOMER DRAWING					
SIZE		A2	00779	©=147353	RESTRICTED TO
SCALE		4:1	SHEET	1 of 1	REV A

AMP 1471-9 REV 31MAR2000

147353-1