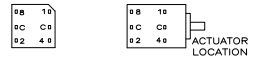
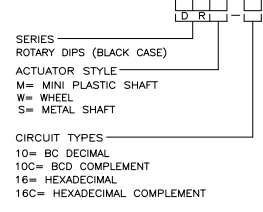


TERMINAL IDENTIFICATION FOR DR SERIES ONLY
 (VIEWED FROM BOTTOM OF SWITCH)



HOW TO ORDER



10-POSITION, BCD SEE NOTE 2

POS	0	1	2	3	4	5	6	7	8	9
C	X	X	X	X	X	X	X	X	X	X
1		X	X	X	X	X	X	X	X	X
2			X	X	X	X	X	X	X	X
4				X	X	X	X	X	X	X
8						X	X	X	X	X

16-POSITION, HEXADECIMAL SEE NOTE 3

POS	0	1	2	3	4	5	6	7	8	9	A	B	C	D	E	F
C	X	X	X	X	X	X	X	X	X	X	X	X	X	X	X	X
1		X	X	X	X	X	X	X	X	X	X	X	X	X	X	X
2			X	X	X	X	X	X	X	X	X	X	X	X	X	X
4				X	X	X	X	X	X	X	X	X	X	X	X	X
8					X	X	X	X	X	X	X	X	X	X	X	X

10 POSITION, BCD COMPLEMENT SEE NOTE 4

POS	0	1	2	3	4	5	6	7	8	9
C	X	X	X	X	X	X	X	X	X	X
1		X	X	X	X	X	X	X	X	X
2		X	X	X	X	X	X	X	X	X
4		X	X	X	X	X	X	X	X	X
8		X	X	X	X	X	X	X	X	X

16-POSITION, HEXADECIMAL COMPLEMENT SEE NOTE 5

POS	0	1	2	3	4	5	6	7	8	9	A	B	C	D	E	F
C	X	X	X	X	X	X	X	X	X	X	X	X	X	X	X	X
1		X	X	X	X	X	X	X	X	X	X	X	X	X	X	X
2		X	X	X	X	X	X	X	X	X	X	X	X	X	X	X
4		X	X	X	X	X	X	X	X	X	X	X	X	X	X	X
8		X	X	X	X	X	X	X	X	X	X	X	X	X	X	X

SPECIFICATIONS:

MATERIAL:
 FRAME & CASE: PPS UL94V-0, BLACK
 ROTOR: PPS UL94V-0, COLOR SEE P/N TABLE
 FIXED CONTACT TERMINAL: COPPER ALLOY, GOLD FLASH OVER NICKEL PLATE
 MOVING CONTACT: COPPER ALLOY, GOLD FLASH OVER NICKEL PLATE
 BALL SUPPORT PLATE: COPPER ALLOY
 BALL: STAINLESS STEEL
 DETENT SPRING: STAINLESS STEEL
 BUSHING (DRS): ZINC DIE CAST.
 SHAFT (DRS): COPPER ALLOY-NICKEL PLATE

ELECTRICAL:
 CONTACT RATING: 0.4 VA @ 20V DC OR PEAK AC
 INITIAL CONTACT RESISTANCE: 50 MILLIOHMS MAX.
 INSULATION RESISTANCE: 1,000 MEGOHMS @ 100V DC.
 DIELECTRIC STRENGTH: 300V AC
 LIFE EXPECTANCY: 10,000 ROTATIONS

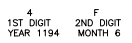
MECHANICAL:
 OPERATING FORCE: 13.88 OZF.IN. MAX

ENVIRONMENTAL:
 OPERATING TEMPERATURE: -30 TO +85 DEGREES C
 STORAGE TEMPERATURE: -45 TO +100 DEGREES C
 RESISTANCE TO SOLDER HEAT-PER 109-202, COND B (THRU-HOLE)
 SOLDERABILITY-PER JIS C 0050 & JIS C 0053

NOTES:

- COMMON TERMINALS ARE CONNECTED INTERNALLY.
- RED ROTOR WITH WHITE PRINTING ON TOP AND SIDE OF SWITCH. "S" STYLES HAVE NO PRINTING ON TOP.
- BLACK ROTOR WITH WHITE PRINTING ON TOP AND SIDE OF SWITCH. "S" STYLES HAVE NO PRINTING ON TOP.
- ORANGE ROTOR WITH WHITE PRINTING ON TOP AND SIDE OF SWITCH EXCEPT FOR THE "W" STYLES, WHICH HAVE BLACK PRINTING ON TOP. "S" STYLES HAVE NO PRINTING ON TOP.
- WHITE ROTOR WITH WHITE PRINTING ON TOP AND SIDE OF SWITCH EXCEPT FOR THE "W" STYLES, WHICH HAVE BLACK PRINTING ON TOP. "S" STYLE HAVE NO PRINTING ON TOP.
- ALL MATERIALS AND FINISHES SHALL COMPLY WITH EU DIRECTIVE 2002/95/EC OF 27JAN2003 (ROHS)

LOCATE 'ALCO' TRADE NAME AND LOT NUMBER MARKING.
 LOT NUMBER TO BE MARKED AS FOLLOWS:



MARK WITH PERMANENT WHITE INK.

SEE SHEET 2 FOR DIMENSIONAL SPEC'S

ROTOR COLOR	CASE COLOR	ALCO P/N	PART NO.
N/A	BLACK	DRS16C	5-1825033-6
N/A	BLACK	DRS16	5-1825033-1
N/A	BLACK	DRS10C	4-1825033-6
N/A	BLACK	DRS10	4-1825033-1
WHITE	BLACK	DRW16C	3-1825033-6
BLACK	BLACK	DRW16	3-1825033-1
ORANGE	BLACK	DRW10C	2-1825033-6
RED	BLACK	DRW10	2-1825033-1
WHITE	BLACK	DRM16C	1-1825033-6
BLACK	BLACK	DRM16	1-1825033-1
ORANGE	BLACK	DRW10C	1825033-6
RED	BLACK	DRW10	1825033-1

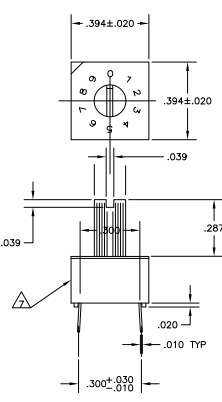
THIS DRAWING IS A CONTROLLED DOCUMENT. REV. 00

TE Connectivity
 ROTARY DIP SWITCH

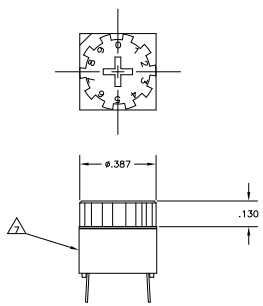
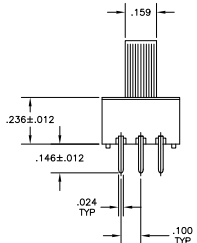
DATE 11/07/09
 DRAWING NO. 1825033
 CUSTOMER DRAWING

THIS DRAWING IS UNPUBLISHED
 ALL RIGHTS RESERVED

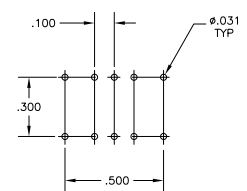
REV	DATE	DESCRIPTION	BY	APP
AD 00	-	SEE SHEET 1	-	-



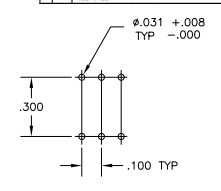
DRM
PC MOUNT



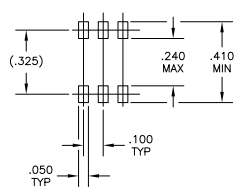
DRW
PC MOUNT



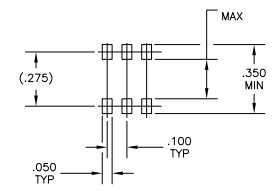
'S' STYLE VERTICAL



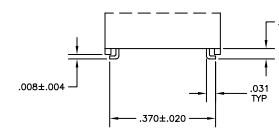
PC



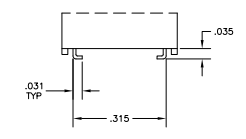
OUTSIDE "L"



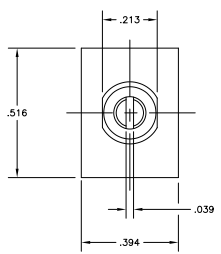
INSIDE "L"



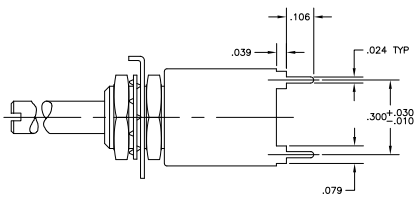
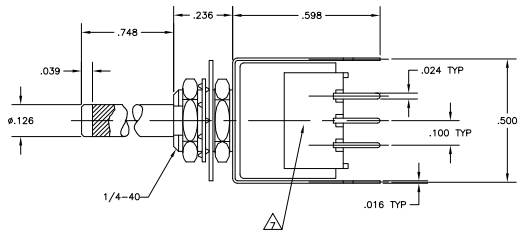
"S" OUTSIDE L TERMINAL
VERTICAL



"SA" INSIDE L TERMINAL
VERTICAL



DRS
"S" STYLE VERTICAL



THIS DRAWING IS A CONTROLLED DOCUMENT.		REV	DATE	BY	APP
WORKS		DESIGN	DATE	BY	APP
DRAWING		PROJECT	DATE	BY	APP
CHECKED		DATE	BY	APP	
APPROVED		DATE	BY	APP	
CUSTOMER DRAWING		DATE	BY	APP	

TE Connectivity
 ROTARY
 DIP SWITCH

SIZE: A1
 DATE: 00779
 DRAWING NO: 1825033
 SHEET: 4.1 OF 2