

4

3

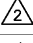
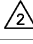


2

1


THIS DRAWING IS UNCLASSIFIED. RELEASED FOR PUBLICATION 2000
 © COPYRIGHT 2000 BY TYCO ELECTRONICS CORPORATION. ALL RIGHTS RESERVED.


LOC	DIST	REVISIONS				
P	LTR	DESCRIPTION	DATE	DWN	APVD	
		A1	PART NUMBER CHANGED TO TYCO ELECTRONICS	24JAN2001	ACK	GF
		B1	MAT.-COLOUR CHANGE FROM BLUE TO NATURE	30.10.07	M.S	MS
		B2	REVISED PER ECO-10-000445	11JAN09	KK	AEG

CROSS REFERENCE LIST / UEBERSETZUNGSLISTE

TE - PN	OLD PART NUMBER	SEE SHEET	TE - PN	OLD PART NUMBER	SEE SHEET
1 393 546 - 1	C42315-A1347-A101	2	 1 - 1 393 546 - 1	C42315-A1347-A112	2
1 393 546 - 2	C42315-A1347-A102	2	 1 - 1 393 546 - 2	C42315-A1347-A116	2
1 393 546 - 3	C42315-A1347-A103	2	1 - 1 393 546 - 3	C42315-A1347-A124	2
1 393 546 - 4	C42315-A1347-A104	2	1 - 1 393 546 - 4	C42315-A1347-A201	3
1 393 546 - 5	C42315-A1347-A105	2	1 - 1 393 546 - 5	C42315-A1347-A202	3
 1 393 546 - 6	C42315-A1347-A106	2	1 - 1 393 546 - 6	C42315-A1347-A203	3
1 393 546 - 7	C42315-A1347-A107	2	1 - 1 393 546 - 7	C42315-A1347-A204	3
1 393 546 - 8	C42315-A1347-A108	2	 1 - 1 393 546 - 8	C42315-A1347-A205	3
1 393 546 - 9	C42315-A1347-A109	2	1 - 1 393 546 - 9	C42315-A1347-A208	3
1 - 1 393 546 - 0	C42315-A1347-A110	2	2 - 1 393 546 - 0	C42315-A1347-A212	3

ERSETZT EC-ZEICHNUNG C42315-A1347-A1***-27 BL. 1 UND 2
 UND C42315-A1347-A2***-27 BL. 1

 OBSOLETE PARTS: OBSOLETE CIS STREAMLINING PER D.RENAUD/D.SINISI

<small>THIS DRAWING IS A CONTROLLED DOCUMENT FOR TYCO ELECTRONICS CORPORATION IT IS SUBJECT TO CHANGE AND THE CONTROLLING ENGINEERING ORGANIZATION SHOULD BE CONTACTED FOR THE LATEST REVISION.</small>		DWN 24 JAN 2001 G. ACKERMANN CHK M. SCHLEIHAUF ZPVD G. FEILMEIER	 tyco Electronics AMP GmbH D - 67346 Speyer
DIMENSIONS: mm	TOLERANCES UNLESS OTHERWISE SPECIFIED: 0 PLC ± 1 PLC ± 2 PLC ± 3 PLC ± 4 PLC ± ANGLES ±° FINISH -	NAME PRODUCT SPEC APPLICATION SPEC WEIGHT	DIPFIX - SCHALTER DIPFIX - SWITCH
MATERIAL -	FINISH -	SIZE A3 CAGE CODE 00779 DRAWING NO. C-1393546-1	RESTRICTED TO -
CUSTOMER DRAWING		SCALE 1:1	SHEET 1 OF 3 REV B2

4

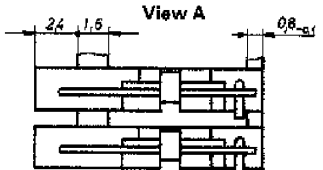
3

2

1

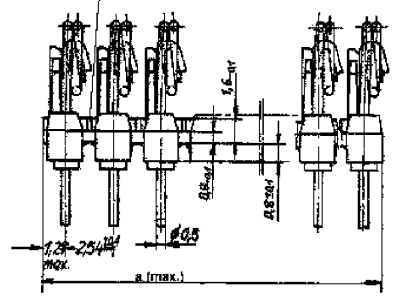
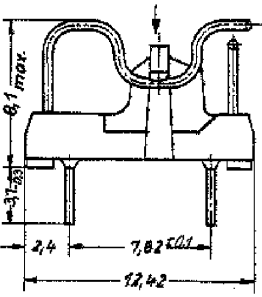
THIS DRAWING IS UNPUBLISHED. RELEASED FOR PUBLICATION 2000
 COPYRIGHT 2000 BY TYCO ELECTRONICS CORPORATION. ALL RIGHTS RESERVED.

LOC	DIST	REVISIONS			
P	LTR	DESCRIPTION	DATE	DWN	APVD
-	-	SEE SHEET 1	-	-	-



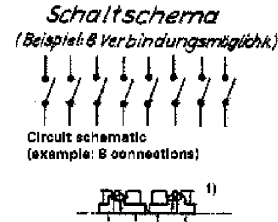
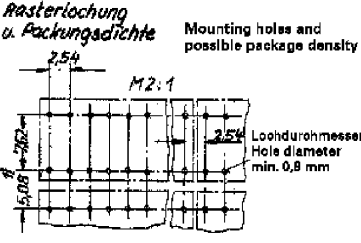
1) Beim Kleinmaß 5,08 müssen die Schalter spiegelbildlich montiert werden
 In the case of dim. 5,08 the switches have to be mounted rear side to rear side

Salzbruchstellen, einzelne Verbindungen abtrennbar
 Predetermined breaking point, single connection units could be broken off



2
2
2

TE - PN	OLD PART NUMBER	DIMENSION a	POSITION NUMBER POLZAHL
1 393 546 - 1	C42315-A1347-A101	2.54	1
1 393 546 - 2	C42315-A1347-A102	5.08	2
1 393 546 - 3	C42315-A1347-A103	7.62	3
1 393 546 - 4	C42315-A1347-A104	10.16	4
1 393 546 - 5	C42315-A1347-A105	12.7	5
1 393 546 - 6	C42315-A1347-A106	15.24	6
1 393 546 - 7	C42315-A1347-A107	17.78	7
1 393 546 - 8	C42315-A1347-A108	20.32	8
1 393 546 - 9	C42315-A1347-A109	22.86	9
1 - 1 393 546 - 0	C42315-A1347-A110	25.4	10
1 - 1 393 546 - 1	C42315-A1347-A112	30.48	12
1 - 1 393 546 - 2	C42315-A1347-A116	40.64	16
1 - 1 393 546 - 3	C42315-A1347-A124	60.96	24



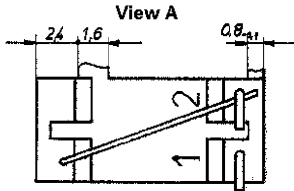
MATERIAL: PBTP-GF30; COLOUR: NATURE

ERSETZT EC-ZEICHNUNG C42315-A1347-A1***-27 BL. 1 UND 2

2 OBSOLETE PARTS: OBSOLETE CIS STREAMLINING PER D.RENAUD/D.SINISI

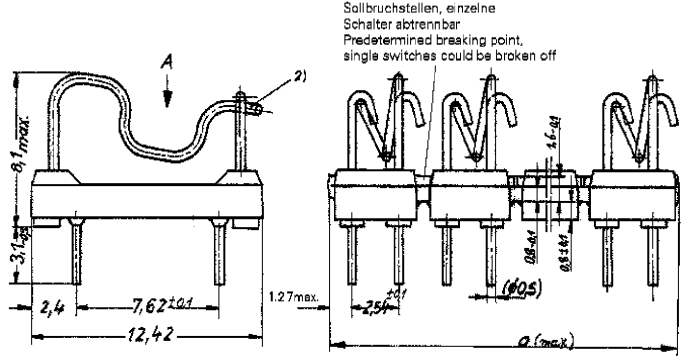
<small>THIS DRAWING IS A CONTROLLED DOCUMENT FOR THE ELECTRICAL CONNECTION IT IS SUBJECT TO CHANGE AND THE CONTROLLING ENGINEERING ORGANIZATION SHOULD BE CONTACTED FOR THE LATEST REVISION.</small>		DWN 24 JAN 2001 G. ACKERMANN CHR M. SCHLEHAUF ZPVD G. FEILMEIER NAME PRODUCT SPEC APPLICATION SPEC WEIGHT CUSTOMER DRAWING	tyco Electronics AMP GmbH D - 67346 Speyer DIPFIX - SCHALTER DIPFIX - SWITCH	RESTRICTED TO
DIMENSIONS: mm 	TOLERANCES UNLESS OTHERWISE SPECIFIED: PL ±0.15 ANGLES ±0.5° FINISH	SIZE A3 CAGE CODE 00779 DRAWING NO. C-1393546-1	SCALE 5:1, 2:1 SHEET 2 OF 3 REV B2	

LOC	DIST	REVISIONS			
P	LTR	DESCRIPTION	DATE	DWN	APVD
-	-	SEE SHEET 1	-	-	-

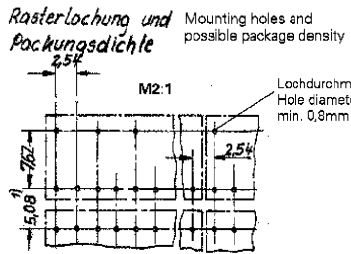


1) Beim Kleinmaß 5,08 müssen die Schalter spiegelbildlich montiert werden
 In the case of dim. 5,08 the switches have to be mounted rear side to rear side

2) ausgeliefert in ausgahaktem Zustand
 delivered in unlocked condition



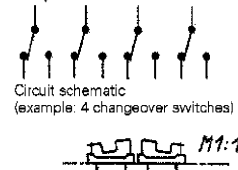
Sollbruchstellen, einzelne Schalter abtrennbar
 Predetermined breaking point, single switches could be broken off



Rasterlochung und Packungsdichte
 Mounting holes and possible package density

Lochdurchmesser
 Hole diameter min. 0.8mm

Schaltschema
 (Beispiel: 4 Umschalter)



TE - PN	OLD PART NUMBER	DIMENSION a	POSITION NUMBER POLZAHL
1 - 1 393 546 - 4	C42315-A1347-A201	5.08	1
1 - 1 393 546 - 5	C42315-A1347-A202	10.16	2
1 - 1 393 546 - 6	C42315-A1347-A203	15.24	3
1 - 1 393 546 - 7	C42315-A1347-A204	20.32	4
1 - 1 393 546 - 8	C42315-A1347-A205	25.4	5
1 - 1 393 546 - 9	C42315-A1347-A208	40.64	8
2 - 1 393 546 - 0	C42315-A1347-A212	60.96	12

ERSETZT EC-ZEICHNUNG C42315-A1347-A2***-27 BL.1

OBSELETE PARTS: OBSELETE CIS STREAMLINING PER D.RENAUD/D.SINISI

DIMENSIONS: mm TOLERANCES UNLESS OTHERWISE SPECIFIED: 0 PLC ±0.1 1 PLC ±0.1 2 PLC ±0.1 3 PLC ±0.1 4 PLC ±0.1 ANGLES ±0.5° MATERIAL - FINISH -		DWN 24 JAN 2001 G. ACKERMANN CHR M. SCHLEHAUF ZPVD G. FEILMEIER PRODUCT SPEC - APPLICATION SPEC - WEIGHT - CUSTOMER DRAWING	tyco Electronics tyco Electronics AMP GmbH D - 67346 Speyer DIPFIX - SCHALTER DIPFIX - SWITCH SIZE A3 CAGE CODE 00779 DRAWING NO. C-1393546-1 RESTRICTED TO -
SCALE: 5:1, 2:1		SHEET 3 OF 3	REV B2