



**ITT Industries, Inc.**

15 Riverdale Avenue  
Newton, MA 02458  
United States of America  
tel 617.969-3700  
fax 617.243.8389

August 15, 2007

Affecting all current Customers

**Re.: June 20, 2006 - New Marking on the RTE Rotary Dip Switches**

Dear Valued Customer:

We wish to update you about the changing in the marking process for all our RTE Rotary Dip Switches. At the present all position numbers on our RTE series are printed using ink on the metal surface. This process uses chemicals which are dangerous for our health and environment.

ITT Industries, Electronic Components conscious of the restrictive manufacturing guidelines on the environment has decided to stop this process and will start laser marking these products within the next 2/3 weeks. This will align the company to comply in the future with a safer manufacturing process.

We are confident that with this new marking we will offer the following advantages to our Customers:

- We will improve the quality of the marking
- The marking will be permanent
- We will add additional information on the plate such as day/hour of the production for a very clear traceability

Although the laser marking will be different from the printed one it is very clear and legible under the correct lighting.

Please find enclosed a picture example of the previous and new markings for your information.

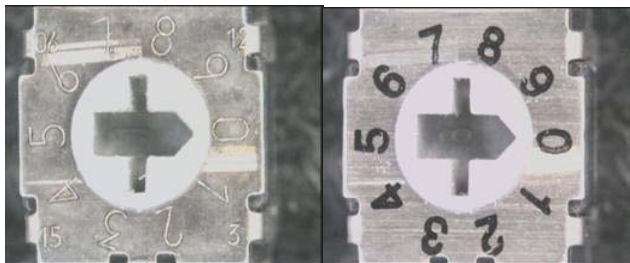
Should you need any additional details please feel free to contact us with any questions.

We thank you for your support and understanding

Sincerely,

Davide Gran

European Product Manager C&K Switch Products ITT Industries EC



New

Old