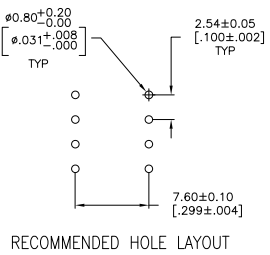
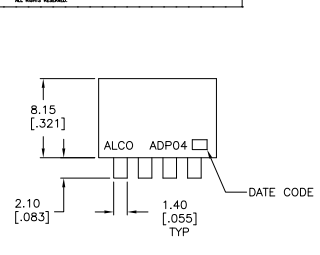
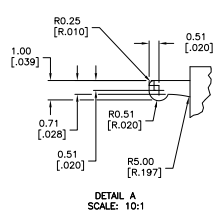
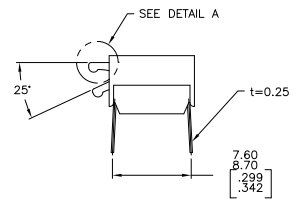
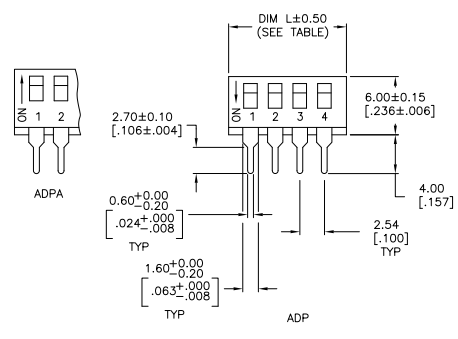


THIS DRAWING IS UNAPPROVED FOR PRODUCTION
 ALL RIGHTS RESERVED

REV	DATE	DESCRIPTION	BY	CHK	APP
AD 00					
		REVISED PER ECD-11-04587			



RECOMMENDED HOLE LAYOUT



DETAIL A
 SCALE: 10:1

SPECIFICATIONS:

MATERIAL:
 CASE: PPS 94V-0, BLACK
 COVER: PPS 94V-0, BLACK
 ACTUATOR: NYLON PA6T 94V-0, WHITE
 MOVING CONTACT: COPPER ALLOY, GOLD OVER NICKEL PLATE.
 FIXED CONTACT/TERMINAL: COPPER ALLOY, GOLD OVER NICKEL PLATE.

ELECTRICAL:
 CONTACT RATING: MAX RATING (SWITCHING) 100 MILLIAMPS @ 24V DC,
 MIN (SWITCHING) 0.10 MICROAMPS @ 1 MILLIVOLT,
 MAX (NON-SWITCHING) 1 AMP @ 5V DC INITIAL
 CONTACT RESISTANCE: 50 MILLIOHMS MAX.
 INSULATION RESISTANCE: 100 MEGOHMS MIN. @ 100 VDC.
 DIELECTRIC STRENGTH: 500 VAC. LIFE EXPECTANCY: 1000 CYCLES MIN.

MECHANICAL:
 ACTUATION FORCE: 800g MAX.

ENVIRONMENTAL:
 OPERATING TEMPERATURE: -22°F TO +185°F (-30°C TO +85°C).
 STORAGE TEMPERATURE: -49°F TO +212°F (-45°C TO +100°C).
 SOLDER HEAT RESISTANCE TO 265±3°C FOR 8±2 SECONDS.
 SOLDERABILITY PER JIS C 0050 & JIS C 0053

- CONTACT PRESSURE: 280,000 PSI.
 - CLEANING: AQUEOUS SOLUTION OR SOLVENT.
 - PACKAGING OPTIONS— CLEAR TUBES OR TAPE AND REEL PER EIA-481 SWITCH SUPPLIED IN THE "OFF" POSITION UNLESS "ON" IS SPECIFIED IN THE ALCO PART NUMBER (SEE PART NUMBER TABLE FOR ALL OPTIONS)
 - TOP & FRONT SURFACES TO BE CLEARLY MARKED AS SHOWN.
 - SWITCHES TO BE BLACK WITH WHITE ACTUATORS AND MARKINGS.
 - ALL MATERIAL AND FINISHES SHALL COMPLY WITH EU DIRECTIVE 2002/95/EC OF 27 JAN 2003 (ROHS)
- △ OBSOLETE PARTS: OBSOLETE CIS STREAMLINING PER D.RENAUD/D.SINISI

SEE SHEET 2 FOR SURFACE MOUNT OPTIONS AND DIMENSIONS.

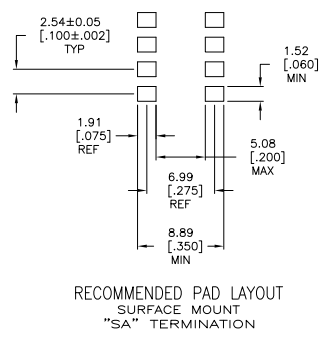
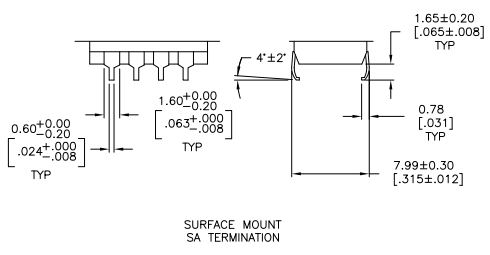
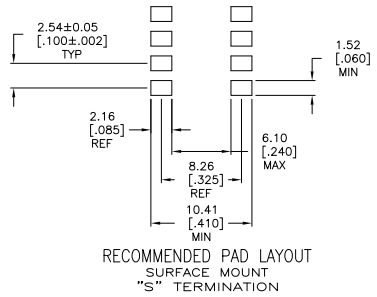
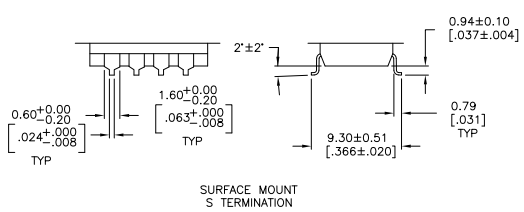
QTY	DESCRIPTION	UNIT	PRICE	DATE	REV	BY	CHK	APP
TUBE	10	27.38	[.078]	ADPA10SA04	6-1571999-4			
TUBE	10	27.38	[.078]	ADPA10SD04	6-1571999-3			
TUBE	10	27.38	[.078]	ADPA10D4	6-1571999-2			
TUBE	9	24.84	[.978]	ADPA09SA04	6-1571999-1			
TUBE	9	24.84	[.978]	ADPA09SD04	6-1571999-0			
TUBE	9	24.84	[.978]	ADPA09D4	5-1571999-9			
TUBE	8	22.30	[.878]	ADPA08SA04	5-1571999-8			
TUBE	8	22.30	[.878]	ADPA08SD04	5-1571999-7			
TUBE	8	22.30	[.878]	ADPA08D4	5-1571999-6			
TUBE	7	19.76	[.778]	ADPA07SA04	5-1571999-5			
TUBE	7	19.76	[.778]	ADPA07SD04	5-1571999-4			
TUBE	7	19.76	[.778]	ADPA07D4	5-1571999-3			
TUBE	6	17.22	[.678]	ADPA06SA04	5-1571999-2			
TUBE	6	17.22	[.678]	ADPA06SD04	5-1571999-1			
TUBE	6	17.22	[.678]	ADPA06D4	5-1571999-0			
TUBE	5	14.68	[.578]	ADPA05SA04	4-1571999-9			
TUBE	5	14.68	[.578]	ADPA05SD04	4-1571999-8			
TUBE	5	14.68	[.578]	ADPA05D4	4-1571999-7			
TUBE	4	12.14	[.478]	ADPA04SA04	4-1571999-6			
TUBE	4	12.14	[.478]	ADPA04SD04	4-1571999-5			
TUBE	4	12.14	[.478]	ADPA04D4	4-1571999-4			
TUBE	2	7.06	[.278]	ADPA02SA04	4-1571999-3			
TUBE	2	7.06	[.278]	ADPA02SD04	4-1571999-2			
TUBE	2	7.06	[.278]	ADPA02D4	4-1571999-1			
OBSOLETE	TAPE & REEL - SWITCH ON	10	27.38	[.078]	ADP10STR04	4-1571999-0		
TAPE & REEL	10	27.38	[.078]	ADP10STR04	3-1571999-9			
OBSOLETE	TUBE	10	27.38	[.078]	ADP10S04	3-1571999-8		
TUBE	10	27.38	[.078]	ADP10S04	3-1571999-7			
OBSOLETE	TAPE & REEL - SWITCH ON	9	24.84	[.978]	ADP09STR04	3-1571999-6		
TAPE & REEL	9	24.84	[.978]	ADP09STR04	3-1571999-5			
OBSOLETE	TUBE	9	24.84	[.978]	ADP09S04	3-1571999-4		
TUBE	9	24.84	[.978]	ADP09S04	3-1571999-3			
OBSOLETE	TAPE & REEL - SWITCH ON	9	24.84	[.978]	ADP09STR04	3-1571999-2		
TAPE & REEL	9	24.84	[.978]	ADP09STR04	3-1571999-1			
OBSOLETE	TUBE	8	22.30	[.878]	ADP08STR04	3-1571999-0		
TAPE & REEL	8	22.30	[.878]	ADP08STR04	2-1571999-9			
OBSOLETE	TUBE	8	22.30	[.878]	ADP08S04	2-1571999-8		
TUBE	8	22.30	[.878]	ADP08S04	2-1571999-7			
OBSOLETE	TAPE & REEL - SWITCH ON	8	22.30	[.878]	ADP08STR04	2-1571999-6		
TAPE & REEL	8	22.30	[.878]	ADP08STR04	2-1571999-5			
OBSOLETE	TUBE	7	19.76	[.778]	ADP07STR04	2-1571999-4		
TAPE & REEL	7	19.76	[.778]	ADP07STR04	2-1571999-3			
OBSOLETE	TUBE	7	19.76	[.778]	ADP07S04	2-1571999-2		
TUBE	7	19.76	[.778]	ADP07S04	2-1571999-1			
OBSOLETE	TAPE & REEL - SWITCH ON	6	17.22	[.678]	ADP06STR04	2-1571999-0		
TAPE & REEL	6	17.22	[.678]	ADP06STR04	1-1571999-9			
OBSOLETE	TUBE	6	17.22	[.678]	ADP06S04	1-1571999-8		
TUBE	6	17.22	[.678]	ADP06S04	1-1571999-7			
OBSOLETE	TAPE & REEL - SWITCH ON	6	17.22	[.678]	ADP06STR04	1-1571999-6		
TAPE & REEL	6	17.22	[.678]	ADP06STR04	1-1571999-5			
OBSOLETE	TUBE	5	14.68	[.578]	ADP05STR04	1-1571999-4		
TAPE & REEL	5	14.68	[.578]	ADP05STR04	1-1571999-3			
OBSOLETE	TUBE	5	14.68	[.578]	ADP05S04	1-1571999-2		
TUBE	5	14.68	[.578]	ADP05S04	1-1571999-1			
OBSOLETE	TAPE & REEL - SWITCH ON	4	12.14	[.478]	ADP04STR04	1-1571999-0		
TAPE & REEL	4	12.14	[.478]	ADP04STR04	1571999-9			
OBSOLETE	TUBE	4	12.14	[.478]	ADP04S04	1571999-8		
TUBE	4	12.14	[.478]	ADP04S04	1571999-7			
OBSOLETE	TAPE & REEL - SWITCH ON	4	12.14	[.478]	ADP04STR04	1571999-6		
TAPE & REEL	4	12.14	[.478]	ADP04STR04	1571999-5			
OBSOLETE	TUBE	2	7.00±0.50 [2.76±.020]	ADP02STR04	1571999-4			
TAPE & REEL	2	7.00±0.50 [2.76±.020]	ADP02STR04	1571999-3				
OBSOLETE	TUBE	2	7.00±0.50 [2.76±.020]	ADP02S04	1571999-2			
TAPE & REEL	2	7.00±0.50 [2.76±.020]	ADP02S04	1571999-1				
PACKAGING	Pole	Dim. L		Old T&E P/N				P/N

THIS DRAWING IS A CONTROLLED DOCUMENT.

INCHES (mm) DECIMALS (mm) FRACTIONS (mm) ANGLES (DEG) DIMENSIONS (mm) TOLERANCES (mm) SURFACE FINISH (RA) MATERIALS (MATERIAL) FINISHES (FINISH) DIMENSIONS (mm) TOLERANCES (mm) SURFACE FINISH (RA) MATERIALS (MATERIAL) FINISHES (FINISH)

DATE: 10/07/99
 DRAWING NO: 1571999
 CUSTOMER DRAWING

REV: 1
 SHEET: 1 OF 2



THIS DRAWING IS A CONTROLLED DOCUMENT.		BY: [REDACTED]	DATE: [REDACTED]	TE Connectivity	
DESIGNED BY: [REDACTED]	DESIGNED DATE: [REDACTED]	BY: [REDACTED]	DATE: [REDACTED]	DIP SWITCH ASSEMBLY ADP/PA SERIES	
APPROVED BY: [REDACTED]	APPROVED DATE: [REDACTED]	BY: [REDACTED]	DATE: [REDACTED]	SIZE: A1	DATE: 00779
CUSTOMER DRAWING		REV: 1	DATE: 1571999	REV: 2	DATE: [REDACTED]