

4

3

2

1

THIS DRAWING IS UNPUBLISHED. RELEASED FOR PUBLICATION. ALL RIGHTS RESERVED.

LOC		DIST		REVISIONS			
F	LNK	DESCRIPTION	DATE	BY	APP'D		
AD	00						
	B3	REVISED PER ECO-11-004587	11MAR11	RK	HMR		

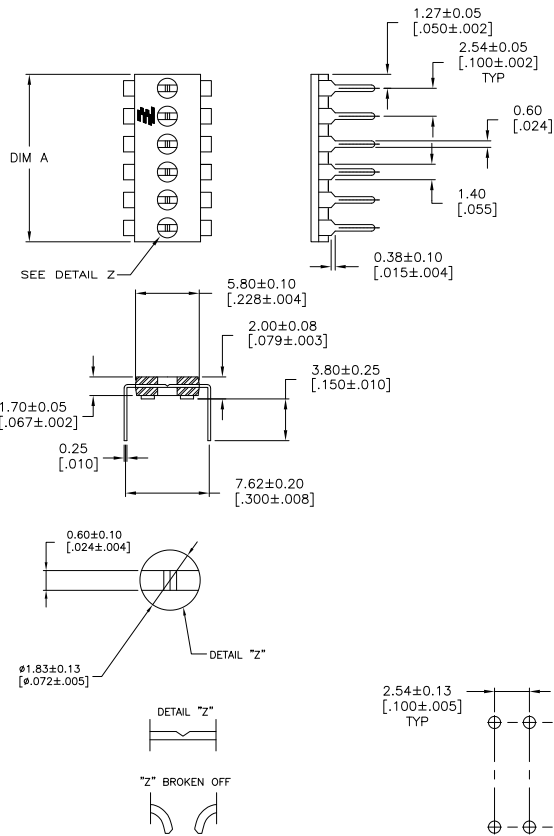
SPECIFICATIONS:

MATERIAL:

CASE: PBT 30% GLASS UL94V-0
TERMINAL: COPPER ALLOY, TIN OVER NICKEL PLATE

△ ALL MATERIALS AND FINISHES SHALL COMPLY WITH EU DIRECTIVE 2002/95/EC OF 27JAN2003 (ROHS)

△ OBSOLETE PARTS: OBSOLETE CIS STREAMLINING PER D.RENAUD/D.SINISI



30.48 [1.200]	12	1-1825190-0
25.40 [1.000]	10	1825190-9
22.86 [0.900]	9	1825190-8
20.32 [0.800]	8	1825190-7
17.78 [0.700]	7	1825190-6
15.24 [0.600]	6	1825190-5
12.70 [0.500]	5	1825190-4
10.16 [0.400]	4	1825190-3
7.62 [0.300]	3	1825190-2
2.54 [0.200]	2	1825190-1
DIM A	POSITION	PART NO.

△ OBSOLETE
△ OBSOLETE
△ OBSOLETE

THIS DRAWING IS A CONTROLLED DOCUMENT.		DRN	S.S.VISHWESWARA	ORGNVCS	
DIMENSIONS: mm [INCHES]		CHK	M.S.SARVER		
TOLERANCES UNLESS OTHERWISE SPECIFIED:		APP'D	M.S.SARVER		
0 PLC	±	PRODUCT SPEC			
1 PLC	±	APPLICATION SPEC			
2 PLC	±	WEIGHT			
3 PLC	±	CUSTOMER DRAWING			
4 PLC	±				
ANGLES	±				
FINISH					
SEE TABLE					

TE Connectivity	
SHUNT, DIP, PROGRAMMABLE	
SIZE	A2
QAGE CODE	00779
DRAWING NO	1825190
RESTRICTED TO	B3
SCALE	4:1
SHEET	1 of 1