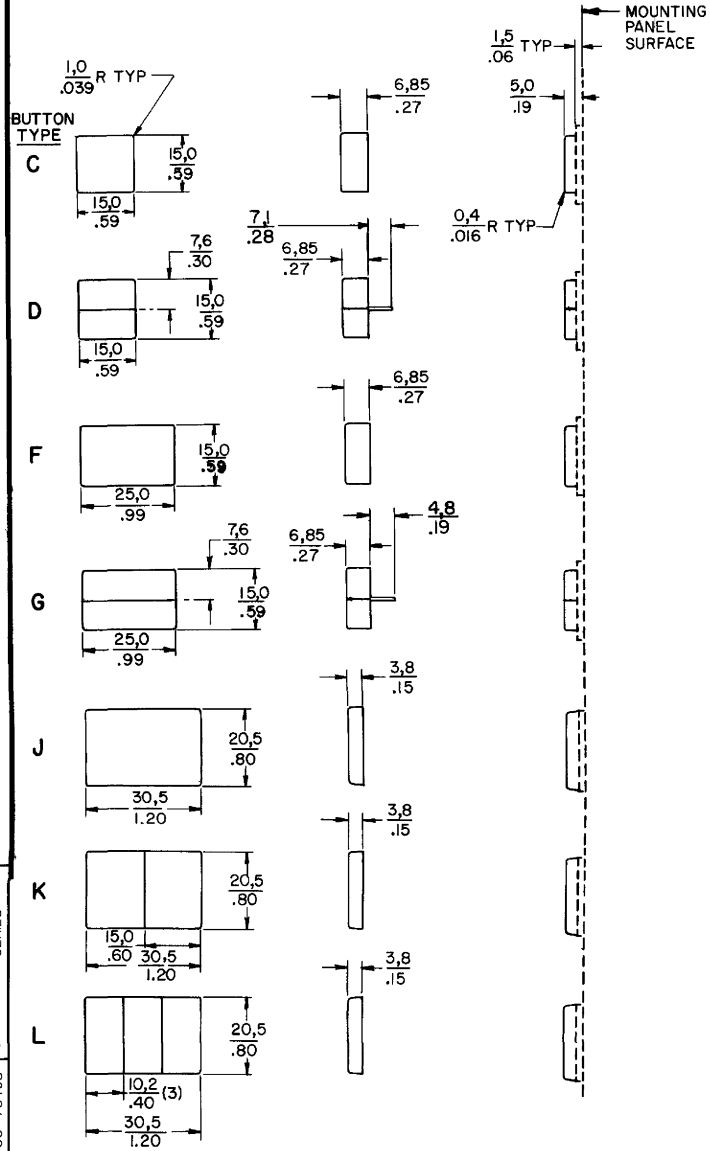


AML BUTTONS & LENS

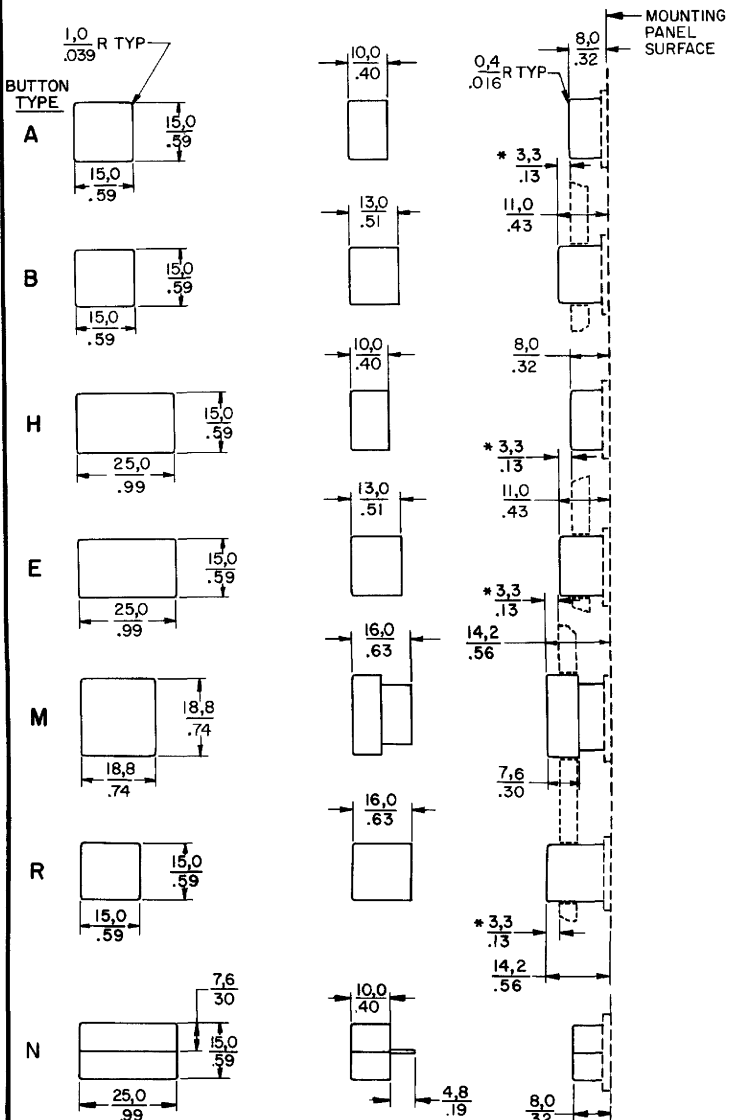
AML 51

STANDARD



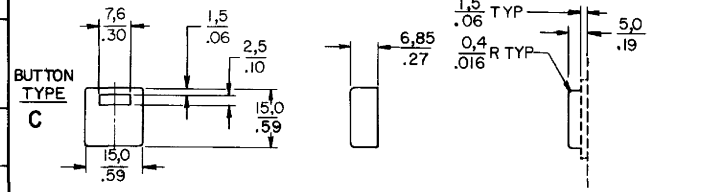
EXTENDED

NOTE: BUTTONS TYPE B, E, M, & R INTENDED FOR SUB PANEL MOUNTING
* MINIMUM RECOMMENDED EXTENSION FROM PANEL SURFACE

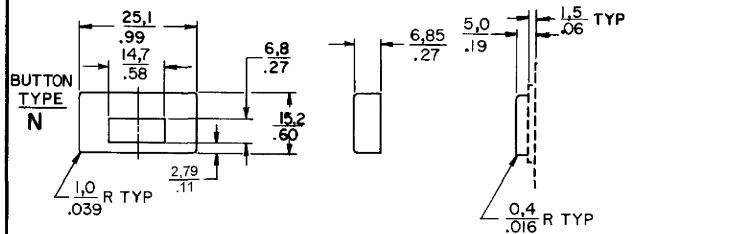


AML 52

LED



NEON



NOTE
1 - TOP SURFACES OF ALL BUTTONS AND LENS HAVE MATTE FINISH
2 - AML 51-C10W FAA-PMA

CATALOG LISTING AML 51 52
 PAGE 1 OF 1 SERIES CHART 1
 RELEASE NO CO-78498 REPLACES AML 51 & 52 SERIES
 ISSUE 5
 REVISIONS
 A C098297
 B 8 JUN 99
 D F044923
 C 26 SEP 01
 C 206138
 D 15 MAR 02
 D 0000187
 APR 03
 CHECK JAF T JUL 94
 DRAWN JAK 17 JUN 94
 RASTER

THIS DRAWING COVERS A PROPRIETARY ITEM AND IS THE PROPERTY OF MICRO SWITCH, A DIVISION OF HONEYWELL. THIS DRAWING IS NOT TO BE COPIED OR USED WITHOUT THE APPROVAL OF MICRO SWITCH.

MICRO SWITCH
FREDPORT ILLINOIS U.S.A.
A DIVISION OF HONEYWELL
FED. MFG. CODE 9411

CATALOG LISTING
AML 51 52
SERIES CHART 1

M

THIRD ANGLE PROJECTION			
DO NOT SCALE PRINT			
TOLERANCES			
APPLY TO DIMENSIONS UNLESS OTHERWISE SPECIFIED			
REFERENCE UNLESS NOTED OTHERWISE			
NO PLACES	AS SHOWN	TO	APPLY
ONE PLACE	AS SHOWN	TO	APPLY
TWO PLACES	2.5	0.005	0.005
THREE PLACES	0.005	0.005	0.005
FOUR PLACES	0.005	0.005	0.005
DESIGN UNITS	METRIC		
DESIGN UNITS	US CUSTOMARY		
RAW MATERIAL - COMMERCIAL STANDARD			
MICRO SWITCH STANDARDS APPLY			
DIMENSIONS ARE TO BE MET BEFORE PROTECTIVE COATINGS ARE APPLIED			
WEIGHT			