

4

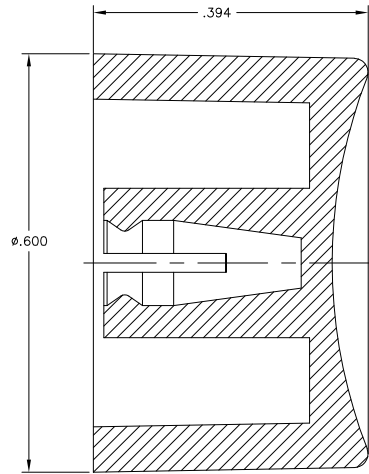
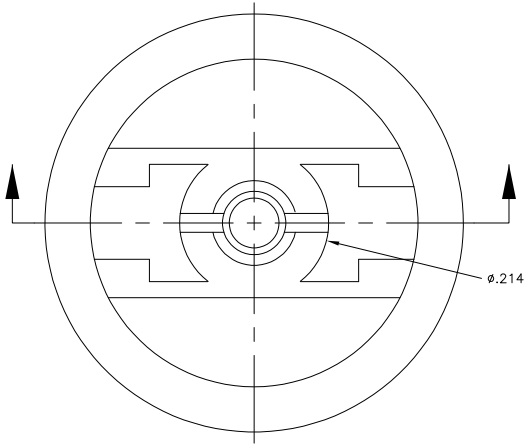
3

2

1

THIS DRAWING IS UNPUBLISHED. RELEASED FOR PUBLICATION  
 © COPYRIGHT BY TYCO ELECTRONICS CORPORATION. ALL RIGHTS RESERVED.

LOC	DIST	REVISIONS			
F	LNK	DESCRIPTION	DATE	BY	APPD
AD	00				
A		ECO-06-18B2	13JAN06	MZ	MZ



1. MATERIAL SHALL COMPLY WITH EU DIRECTIVE 2002/95/EC OF 20JAN2003 (ROHS)
2. CAP FOR USE WITH GREEN SERIES PUSHBUTTON SWITCHES AS SHOWN ON DRAWINGS 1825040 AND 1825041.

WHITE	C23904	1825069-7
BLUE	C23604	1825069-6
GREEN	C23504	1825069-5
YELLOW	C23404	1825069-4
ORANGE	C23304	1825069-3
RED	C23204	1825069-2
BLACK	C23004	1825069-1
COLOR	ALCO PART NUMBER	TYCO PART NUMBER

THIS DRAWING IS A CONTROLLED DOCUMENT.		DR: M. BINNER 30NOV04	Tyco Electronics Corporation Harrisburg, PA 17105-3608	
DIMENSIONS: INCHES		CR: M. ZITTO 30NOV04	CAP, GREEN SERIES, PUSHBUTTON, C23	
TOLERANCES UNLESS OTHERWISE SPECIFIED:		APPRO: M. ZITTO 30NOV04	RESTRICTED TO	
0 PLG	A ± .005	APPLICATION SPEC	SIZE	CAGE CODE
1 PLG	B ± .005	HEIGHT	A2	00779
2 PLG	C ± .005	CUSTOMER DRAWING	C=1825069	
3 PLG	D ± .005	SCALE	10:1	SHEET 1 of 1
4 PLG	E ± .005	REV	A	
ANGLES	B ± .1°			
FINISH				
MATERIAL	POLYAMIDE			

AMP 1471-9 REV 31MAR2000

1825069

A